



OKLAHOMA STATE REGENTS
FOR HIGHER EDUCATION

Improving our future by degrees

Agenda

June 27, 2013

NOTE

This document contains recommendations and reports to the State Regents regarding items on the June 27, 2013 regular meeting agenda. For additional information, please call 405-225-9116 or to get this document electronically go to www.okhighered.org State System.

Materials and recommendations contained in this agenda are tentative and unofficial prior to State Regents' approval or acceptance on June 27, 2013.

OKLAHOMA STATE REGENTS FOR HIGHER EDUCATION
655 Research Parkway, Oklahoma City

A G E N D A

Thursday, June 27, 2013 – 9 a.m.
State Regents' Conference Room
655 Research Parkway, Suite 200, Oklahoma City
Chairman Marlin "Ike" Glass, Jr., Presiding

1. **Announcement of filing of meeting notice and posting of the agenda in accordance with the Open Meeting Act.**
2. **Call to Order.** Roll call and announcement of quorum.
3. **Minutes of Previous Meetings.** Approval of minutes.
4. **Reports.**
 - a. **Report of the Chairman.** (No Action, No Discussion).
 - b. **Report of Chancellor.** (No Action, No Discussion).

FISCAL

5. **E&G Allocation.**
 - a. Approval of FY14 Educational and General Budgets of institutions, constituent agencies, the higher education center, special programs, and other programs. Page 1.
 - b. Approval of interim budget for FY14 for Redlands Community College. Page 3.
 - c. Approval of allocation from Cigarette and Tobacco Tax Revenue for OU and OSU. Page 5.
6. **EPSCoR.** Approval of Contract and Allocation of Matching Funds for the National Science Foundation. Page 7.
7. **Revenue Bond.**
 - a. Review and approval for transmittal to Attorney General the Oklahoma State University's Statement of Essential Facts for 2013B Refunding Bond Issuance. Page 11.

- b. Review and approval for transmittal to Attorney General the Oklahoma State University's Statement of Essential Facts for 2013C G.O. Bond Issuance. Page 13.
- 8. **Endowment Program.** Approval of reallocation of matching funds request from OSU. Page 15.
- 9. **Tuition and Fees.**
 - a. Approval of FY14 Academic Service Fees. Page 19.
 - b. Approval of FY14 Mandatory Fees and Tuition. Page 21.
- 10. **Capital.** Approval of the FY14 Annual Campus Master Plan for submission to the Long-Range Planning Commission. Page 23.
- 11. **Policy.** Approval of Fiscal Policy Updates. Page 25.
- 12. **Purchasing.** Approval of contracts over \$100,000. Page 27.
- 13. **Investments.** Approval of new investment managers. Page 31.

ACADEMIC

- 14. **New Programs.**
 - a. University of Oklahoma. Approval to offer the Master of Science in Environmental Sustainability in Environmental Sustainability, the Bachelor of Arts in Lifespan Care Administration, the Graduate Certificate in Women's and Gender Studies (371) on the Tulsa campus, and the Graduate Certificate in Business Entrepreneurship. Page 33.
 - b. Oklahoma State University. Approval to offer the Master of Science in Materials Science and Engineering in Tulsa. Page 51.
 - c. Northeastern State University. Approval to offer the Bachelor of Arts in Education in Spanish (083) and the Bachelor of Arts in Spanish (082) on the Tulsa campus and via electronic media. Page 57.
 - d. Southeastern Oklahoma State University. Approval to offer the Bachelor of Science in Early Intervention and Child Development. Page 69.
- 15. **Program Deletions.** Approval of institutional requests for program deletions. Page 77.
- 16. **Intensive English Programs.** Approval of The Language Company-Ada, English Language Center-Edmond, Center for English as a Second Language – OU to offer intensive English language programs. Page 79.

EXECUTIVE

17. **Legislative Update and Resolution.** Report on enacted legislation from the 2013 legislative session relating to higher education and approval of resolution. Page 85.
18. **Commendations.** Recognition of State Regents' staff for service and recognitions on state and national projects. Page 87.
19. **Executive Session.** Page 89.

Possible vote to go into executive session pursuant to Title 25, Oklahoma Statutes, Section 307(B)(4), for confidential communications between a public body and its attorneys concerning pending investigations, claims or actions.

Return to open session.

CONSENT DOCKET

20. **Consent Docket.** Approval/ratification of the following routine requests which are consistent with State Regents' policies and procedures or previous actions.
 - a. Programs.
 - (1) Program Modifications. Approval of institutional requests. Page 91.
 - (2) Reconciliation. Ratification of institutional requests. Page 107.
 - b. Capital. Ratification of capital allotments. Page 109.
 - c. Agency Operations.
 - (1) Ratification of purchases in excess of \$25,000. Page 111.
 - (2) Approval of the contract renewal for legal services with the Office of the Attorney General for FY2014. Page 113.
 - (3) Approval of technical amendments to agency retirement plan. Page 117.
 - d. Resolution. Approval of resolution honoring staff. Page 121.
21. **Reports.** Acceptance of reports listed.
 - a. Programs. Status report on program requests. (Supplement) Page 123.
 - b. Annual Reports.
 - (1) Teacher Education Program Admission Study. Page 125.
 - (2) High School Indicators Project.

- (a) High School to College-Going Rates for Oklahoma High School Graduates to Oklahoma Colleges. Page 133.
 - (b) Headcount, Semester Hours & GPA Report. Page 135.
- 22. **Report of the Committees.** (No Action, No Discussion).
 - a. Academic Affairs and Social Justice and Student Services Committees.
 - b. Budget and Audit Committee.
 - c. Strategic Planning and Personnel Committee and Technology Committee.
 - d. Investment Committee.
- 23. **Officers.** Election of State Regents' officers for 2013-2014.
- 24. **Recognition.** Recognition of outgoing Chairman Ike Glass.
- 25. **New Business.** Consideration of "any matter not known about or which could not have been reasonably foreseen prior to the time of posting the agenda."
- 26. **Announcement of Next Regular Meeting** — The next regular meetings are scheduled to be held on Wednesday, September 4, 2013 at 10:30 a.m. and Thursday, September 5, 2013 at 9 a.m. at the State Regents' Office in Oklahoma City.
- 27. **Adjournment.**

Meeting of the
OKLAHOMA STATE REGENTS FOR HIGHER EDUCATION
June 27, 2013

AGENDA ITEM #: 5a

Educational and General Budgets

SUBJECT: Approval of final allocations and approval of Educational and General Budgets of institutions, constituent agencies, higher education centers, special programs and other operations

RECOMMENDATION:

It is recommended that the State Regents approve the final allocations and approve the FY 2014 budgets for institutions, constituent agencies, higher education programs, special programs and other governance operations of the state system as submitted in the allocating resolutions. It is recommended that the State Regents authorize the Chancellor to certify the budgets to the Office of Management and Enterprise Systems. Budget detail is presented to the Regents as a supplement in the FY2014 E&G Budget Summary and Analysis.

BACKGROUND:

At the meeting of May 27, 2013, the State Regents allocated \$988,549,007 in state-appropriated funds for FY14 educational and general operating budgets for institutions, constituent agencies, higher education programs, specific special programs and other State Regents' operations. Budgets for these entities have been submitted and upon approval by the State Regents, a certified copy will be filed with the Office of Management and Enterprise Systems for the establishment of allotments so institutions and programs may encumber and expend funds for the 2014 fiscal year. The Oklahoma's Promise scholarship fund will be funded from dedicated general revenue in addition to the state appropriations allocation at the May meeting. The combined total of state appropriations, including OHLAP is \$1,045.5 and represents a 3.5 percent increase from the original FY2013 appropriation.

POLICY ISSUES:

The recommendation is consistent with Regents' policy and approved budget principles.

ANALYSIS:

The supplemental report provides schedules that summarize each institution's budgeted amount for personnel services; travel; utilities; supplies and other operating expenses; property, furniture and equipment; library books and periodicals; and cash scholarships (tuition waivers are not included). The objects of expenditure are provided for the primary educational and general operating budget, the sponsored budget and the special agency funds. Budget amounts are also available for Ardmore Higher Education Program, the University Center at Ponca City, Quartz Mountain, special programs and other operations of the State Regents.

The primary educational and general operating budgets of colleges and universities will increase by approximately 3.4 percent or \$72.9 million to \$2,226.5 billion. The \$72.9 million increase reflected in the budgets for FY14 in large part represents projected nonresident tuition and fee revenue (47.5%) and slight increases state appropriations. Sixty-eight percent of the revenue increase is budgeted for direct expenditures in student support such as instruction, research, and academic support and student services. Another 15.8% is budgeted for increases in scholarships.

The sponsored programs budget (E&G Part II) is budgeted to increase by approximately \$5.2 million to \$511.9 million in FY14. The increase is being budgeted through the University of Oklahoma Health Sciences Center for research activity.

The institutions and consistent agencies, as well as the State Regents' office, will continue to be prudent in the expenditures of state revenue and cost savings will remain a focus throughout FY2014.

Note: Upon approval of the recommended action in Agenda Item #5b, the noted conditions to the acceptance of the Redlands Community College FY2014 budget submission is also here-in incorporated into the FY14 E&G Summary and Analysis document.

Supplement

Meeting of the
OKLAHOMA STATE REGENTS FOR HIGHER EDUCATION
June 27, 2013

AGENDA ITEM #5-b:

E&G Allocation – Redlands Community College.

SUBJECT: Conditional approval of the FY2014 operating budget submitted by Redlands Community College.

RECOMMENDATION:

It is recommended that the State Regents provide a conditional approval of the operating budget that has been submitted by Redlands Community College for FY2014 operations with the following requirements: (1) that such FY2014 budget shall be considered by the State Regents to be an interim budget only, which will allow RCC to begin operations for FY2014, and (2) that, at such time as the State Regents require but in no event later than August 16, 2013, RCC shall submit a revised FY2014 budget which shall address certain financial issues, including but not limited to, all outstanding obligations for FY2014 and those for FY2013 which are in arrears.

BACKGROUND:

After receiving information that Redlands Community College is incurring financial difficulties, the State Regents under their fiduciary responsibility, contracted with BKD, LLP to conduct a financial review of the revenue cash flow and expenditure obligations of the College for FY2013. BKD, LLP provided a final report to the State Regents of their review on May 30, 2013. The report discloses that Redlands Community College has over \$1.1 million in outstanding expense obligations. The Board of Regents for Redlands Community College met and approved on June 6, 2013, the FY2014 budget that was submitted to the State Regents on June 12, 2013. The budget that was approved by the Redlands' Board of Regents was action taken prior to the receipt and full-vetting of the BKD, LLP audit report. Thus, the State Regents should provide a conditional approval which will allow for the development of a thorough financial plan to meet the current and future fiscal year obligations.

POLICY ISSUES:

The recommendation is consistent with Regents' policy and approved budget principles.

ANALYSIS:

The attached budget submitted by Redlands Community College (RCC) is recommended for conditional approval with the following requirements: (1) that such FY2014 budget shall be considered by the State Regents to be an interim budget only, which will allow RCC to begin operations for FY2014, and (2) that, at such time as the State Regents require but in no event later than August 16, 2013, RCC shall submit a revised FY2014 budget which shall address certain financial issues, including but not limited to, all outstanding obligations for FY2014 and those for FY2013 which are in arrears.

Meeting of the
OKLAHOMA STATE REGENTS FOR HIGHER EDUCATION
June 27, 2013

AGENDA ITEM #5-c:

E&G Allocation.

SUBJECT: Approval of allocations to Oklahoma State University Center for Health Sciences and the University of Oklahoma Health Sciences Center from the revenue derived from the sale of cigarettes and tobacco products.

RECOMMENDATION:

It is recommended that the State Regents approve the allocation of \$2,144,889.92 to Oklahoma State University Center for Health Sciences (OSU CHS) and \$2,144,889.92 to the University of Oklahoma Health Sciences Center (OUHSC) from revenue collected from the taxes placed on the sale of cigarettes and tobacco products.

BACKGROUND:

The Oklahoma Legislature passed House Bill No. 2660 in May 2004, designating a portion of the revenue collected from taxes on the sale of cigarettes and tobacco products to be allocated for specific purposes at OUHSC and OSU CHS. This revenue will be deposited into dedicated funds, the "Comprehensive Cancer Center Debt Service Revolving Fund," at the Health Sciences Center and the "Oklahoma State University College of Osteopathic Medicine Revolving Fund," at OSU CHS. The bill stated that the revenue collected shall be evenly deposited into accounts designated at these entities, for the purpose of servicing the debt obligations incurred to construct a nationally designated comprehensive cancer center at the OU Health Sciences Center and for the purpose of servicing debt obligations for construction of a building dedicated to telemedicine, for the purchase of telemedicine equipment and to provide uninsured/indigent care in Tulsa County through the OSU College of Osteopathic Medicine. In 2007, the Oklahoma Legislature updated the purpose for use of the "Comprehensive Cancer Center Debt Service Revolving Fund" to include Cancer Center operations. The State Regents approved the first allocation of these funds in the meeting of May 27, 2005.

POLICY ISSUES:

The recommendation is consistent with Regents' policy and approved budget principles.

ANALYSIS:

The fund currently has on deposit \$4,289,779.84. This amount is sufficient for a transfer of \$2,144,889.92 each to OSU CHS and OUHSC. The OU Health Sciences Center will use their funds for debt service and operations of the Comprehensive Cancer Center. The OSU Center for Health Sciences will expend their funds on the following approved program components: (1) indigent patient clinical care, (2) telemedicine equipment and (3) facility upgrades.

The current accumulated allocation to each institution, including this allocation, totals to \$51,156,538.02.

Meeting of the
OKLAHOMA STATE REGENTS FOR HIGHER EDUCATION
June 27, 2013

AGENDA ITEM #6:

EPSCoR.

SUBJECT: Approval of Contract and Allocation of Matching Funds for the National Science Foundation.

RECOMMENDATION:

It is recommended that the State Regents approve an agreement with Oklahoma State University to serve as the fiscal agent for matching funds for the National Science Foundation (NSF) EPSCoR Research Infrastructure Improvement Award (RII) and an allocation of \$800,000 for this program for FY 2014.

BACKGROUND:

Seven federal agencies have EPSCoR or similar programs to encourage the development of competitive sponsored research in states that have historically had little federally sponsored research. The federal agencies are the National Science Foundation, the National Institutes of Health, the Environmental Protection Agency, the Department of Energy, the Department of Defense, the National Aeronautics and Space Administration, and the United States Department of Agriculture. Oklahoma is one of 29 states that participate in a program at one or more federal agencies.

For FY 2014, the State Regents budget provides an allocation of \$2,699,647 for all Oklahoma EPSCoR projects.

POLICY ISSUES:

This section is consistent with State Regents' policy and actions.

ANALYSIS:

Past NSF EPSCoR awards to Oklahoma not only supported individual investigators, but established research collaborations and programs that transcend individual campuses and institutions to build statewide inter-institutional Science and Technology Centers in biotechnology, materials science and environmental research. These centers bring together existing individual and group research strengths in the state and provide the critical mass of researchers and facilities to achieve national competitiveness for NSF grant funding.

Oklahoma has been awarded a five-year NSF EPSCoR Research Infrastructure Improvement award beginning June 1, 2013 in the amount of \$20 million. The grant application provides a matching commitment of \$800,000 per year from the Oklahoma State Regents of Higher Education.

The new award continues infrastructure improvements for the Science and Technology centers, encourages the success of minorities and women as professionals in science and engineering and promotes university-private sector partnerships.

Other areas of special focus include:

- the creation of a stable base of R&D funding for Oklahoma higher education;
- the recruitment and retention of high quality science and engineering faculty; and
- the enhancement of the public visibility of the state's research and graduate programs.

The Research Infrastructure Improvement award focuses on the theme of climate research. The award, "Adapting Socio-ecological Systems to Increased Climate Variability," will facilitate research and learning opportunities for college faculty, college students and K-12 students. The NSF award is a multi-institutional collaborative project that includes researchers from Oklahoma State University, The Samuel Roberts Noble Foundation, the University of Oklahoma and the University of Tulsa.

The attached agreement formalizes Oklahoma State University's role as the fiscal agent for the first year of the award.

**Agreement Between the
Oklahoma State Regents for Higher Education
and
Oklahoma State University
Pertaining to
Experimental Program to Stimulate Competitive Research**

This agreement is between the Oklahoma State Regents for Higher Education (OSRHE), the party of the first part, and Oklahoma State University (OSU), the party of the second part, executed this 27th day of June 2013.

WHEREAS the Oklahoma EPSCoR Advisory Committee, together with Oklahoma State University, the University of Oklahoma, the Samuel Roberts Noble Foundation, initiated a Research Infrastructure Improvement Plan proposal under the Experimental Program to Stimulate Competitive Research (EPSCoR) of the National Science Foundation;

WHEREAS the National Science Foundation has made an award of monies based on scientific merit for the Oklahoma EPSCoR proposal;

WHEREAS the Oklahoma State Regents for Higher Education have allocated monies for EPSCoR sufficient to provide matching funds for this project; said allocated monies will be distributed by OSRHE for this program pursuant to the constitutional authority vested in OSRHE, the coordinating board of control for higher education;

WHEREAS the expanding number of Oklahoma EPSCoR programs and activities have likewise achieved a degree of statewide and national visibility;

THEREFORE, the parties agree that:

- 1) The OSRHE, as the coordinating board of control for higher education, shall allocate a sum of monies up to \$800,000 for the period of June 1, 2013 through May 31, 2014. Said monies represent the matching monies to the National Science Foundation grant to the Oklahoma EPSCoR Program and to institutional monies allocated to the purposes of the project.
- 2) OSU will act as the fiscal agent for this program for the term referenced above and shall distribute monies as appropriate to the other program participants including the University of Oklahoma and the Samuel Roberts Noble Foundation, subject to the following provisions:
 - a. The Principal Investigator (PI), James Wicksted, shall have final budget authority for all expenditures of State Regents matching funds.
 - b. OSU shall provide monthly reports in a timely manner of all expenditures on the award to the PI.
 - c. OSU shall request prior approval from the PI for any State Regents matching funds expenditure that differs from those listed in the budget submitted to NSF.
 - d. A no-cost extension may be requested for any unspent funds at the end of this agreement.

- e. OSU shall provide an annual report in a format to be determined jointly by the OSRHE and OSU, accounting for all monies expended under the terms of the agreement.
- 3) This agreement shall be subject to continuing approval by the National Science Foundation of the scientific and technical merits of the program.
- 4) OSU further agrees that by accepting said funds it will abide by the terms and provisions of the National Science Foundation grant.

THE PARTIES HAVE READ THE TERMS AND PROVISIONS OF THIS AGREEMENT AND HEREBY GIVE THEIR VOLUNTARY CONSENT TO THAT AGREEMENT.

Oklahoma State University

Oklahoma State Regents for Higher Education

By: _____
Vice President for Research

By: _____
Chancellor

Date: _____

Date: _____

Meeting of the
OKLAHOMA STATE REGENTS FOR HIGHER EDUCATION
June 27, 2013

AGENDA ITEM #7-a:

Revenue Bond.

SUBJECT: Review of Statement of Essential Facts.

RECOMMENDATION:

It is recommended that the State Regents certify to the Attorney General of Oklahoma that the Statements of Essential Facts for Oklahoma State University, Series 2013B an amount of approximately \$20,000,000 is substantially accurate.

BACKGROUND:

For revenue bonds issued pursuant to Title 70, O.S., Supp. 2005, Sections 3305(n) and 3980.1 *et seq.*, a Statement of Essential Facts shall be prepared by the issuing Board of Regents for the use of and information of prospective bond purchasers and requires that the State Regents examine the Statement of Essential Facts and, if found to be substantially accurate, certify such to the Attorney General of Oklahoma. This series represents sixth series to be issued under the “General Obligation” legislation for Oklahoma State University.

POLICY ISSUES: None

ANALYSIS:

The proceeds received from the sale of the Series 2013B bonds will be used (1) to refund bonds originally used to construct, renovate, remodel, expand, and equip athletic facilities on the Stillwater Campus, and (2) to cover certain costs of issuance.

The bonds, to be issued as fully registered bonds, will be payable on August 1 each of the years 2013 through 2043, with interest payments commencing on February 1, 2014, and semiannually each year thereafter. The bonds are special obligations of the Board of Regents for the Oklahoma Agricultural and Mechanical Colleges. These bonds are being issued on parity with the following general obligation bond issuances: 2009A, 2010A, 2010B, 2010C and 2013A. The bonds are the sixth issued under the University’s General Bond Obligation authorization.

The University has pledged, as security for the bonds the General Revenues of the University including income to be received from usage of the facilities. No reserve requirement will be established with respect to these series of bonds. The pledged revenues as anticipated by the University’s Board will provide sufficient revenue to pay principal of and interest on the Bonds. The University will have an estimated, net present value savings of \$3,227,642 as a result of the refinancing.

The Statement of Essential Facts as reflected in the Preliminary Official Statement for the refunding the recreational facilities projects has been reviewed and found to be substantially accurate. Projected revenue, as described in the Statement, will assure that revenues will be adequate to cover debt service

requirements. Oklahoma State University maintains compliance with their Board of Regents' "Debt Policy," and will support the bonds by an achievable financial plan that will include servicing the debt, meeting new or increased operating costs, and maintaining an acceptable debt service coverage ratio.

Financial data was provided by Oklahoma State University and reviewed by Mr. Rick Smith, Financial Consultant to the University and Steve Whitworth, Associate Comptroller, and internally reviewed by Sheri Mauck, Associate Vice Chancellor for Budget and Finance and Amanda Paliotta, Vice Chancellor for Budget and Finance.

A copy of the Preliminary Official Statement is available for review.

Meeting of the
OKLAHOMA STATE REGENTS FOR HIGHER EDUCATION
June 27, 2013

AGENDA ITEM #7-b:

Revenue Bond.

SUBJECT: Review of Statement of Essential Facts.

RECOMMENDATION:

It is recommended that the State Regents certify to the Attorney General of Oklahoma that the Statements of Essential Facts for Oklahoma State University, Series 2013C an amount of approximately \$84,500,000 is substantially accurate.

BACKGROUND:

For revenue bonds issued pursuant to Title 70, O.S., Supp. 2005, Sections 3305(n) and 3980.1 *et seq.*, a Statement of Essential Facts shall be prepared by the issuing Board of Regents for the use of and information of prospective bond purchasers and requires that the State Regents examine the Statement of Essential Facts and, if found to be substantially accurate, certify such to the Attorney General of Oklahoma. This series represents seventh series to be issued under the “General Obligation” legislation for Oklahoma State University.

POLICY ISSUES: None

ANALYSIS:

The proceeds received from the sale of the Series 2013C bonds will be used (1) to construct, renovate, remodel, expand, and equip various facilities on the Stillwater Campus as outlined below, and (2) to cover certain costs of issuance.

The bonds, to be issued as fully registered bonds, will be payable on August 1 each of the years 2013 through 2043, with interest payments commencing on February 1, 2014, and semiannually each year thereafter. The bonds are special obligations of the Board of Regents for the Oklahoma Agricultural and Mechanical Colleges. These bonds are being issued on parity with the following general obligation bond issuances: 2009A, 2010A, 2010B, 2010C, 2013A and 2013B. The bonds are the seventh issued under the University’s General Bond Obligation authorization.

The University has pledged, as security for the bonds the General Revenues of the University including income to be received from usage of the facilities. No reserve requirement will be established with respect to these series of bonds. The pledged revenues as anticipated by the University’s Board will provide sufficient revenue to pay principal of and interest on the Bonds.

The Statement of Essential Facts as reflected in the Preliminary Official Statement for the refunding the recreational facilities projects has been reviewed and found to be substantially accurate. Projected revenue, as described in the Statement, will assure that revenues will be adequate to cover debt service requirements. Oklahoma State University maintains compliance with their Board of Regents’ “Debt

Policy,” and will support the bonds by an achievable financial plan that will include servicing the debt, meeting new or increased operating costs, and maintaining an acceptable debt service coverage ratio.

Projects to be included in the 2013C financing include:

Residential Life Housing	\$65,000,000
Library Storage Facility	\$ 7,500,000
Civil Engineering Labs Building	\$ 6,000,000
Veterinary Medicine Academic Center	\$ 6,000,000

Financial data was provided by Oklahoma State University and reviewed by Mr. Rick Smith, Financial Consultant to the University and Steve Whitworth, Associate Comptroller, and internally reviewed by Sheri Mauck, Associate Vice Chancellor for Budget and Finance and Amanda Paliotta, Vice Chancellor for Budget and Finance.

A copy of the Preliminary Official Statement is available for review.

Meeting of the
OKLAHOMA STATE REGENTS FOR HIGHER EDUCATION
June 27, 2013

AGENDA ITEM #8:

Endowment Program.

SUBJECT: Approval of new accounts.

RECOMMENDATION:

It is recommended that the State Regents approve substitute accounts at the request of Oklahoma State University. These accounts will replace those originally matched in October 2012, with any accumulated earnings, from the \$141.9 million in state funds received through Senate Bill 1969 as approved by the 2012 Legislature. The original allotment to OSU will not change.

BACKGROUND:

The 2012 Legislature appropriated state-matching funds through Senate Bill No. 1969. These funds are appropriated to address the backlog in the endowed chairs queue that currently totals over \$282 million in private donations and represents 804 in increases and new accounts at 22 institutions in the state system. The last funding provided for this purpose was the use of bond proceeds in August 2010. A methodology for distributing the state matching funds was adopted at the June 2012 meeting of the State Regents. This action is approval for substitute accounts from those matched in October 2012, for full participation in the Endowed Chairs Program for Oklahoma State University only.

POLICY ISSUES:

The State Regents' Policy for Administering the Regents' Endowment Fund Program provides that:

Endowed chairs and distinguished professorships should be established in academic areas that will contribute to the enhancement of the overall cultural, business, scientific or economic development of Oklahoma.

Endowed chairs and professorships must be established in areas for which the institution has ongoing, approved academic programs.

An institution may apply for an endowed chair, professorship or other related project upon meeting the requirements for establishing an account (an institution must have on deposit at least 50% of the private funds minimum required match as set forth in the policy, with a written commitment that the balance will be on deposit within a 36-month period). Matching funds must originate from monies contributed to the institution from sources specifically designated by the donor for the purpose specified in the endowment fund policy.

ANALYSIS:

The University has requested that the following changes be made to the approvals for Oklahoma State University. Their original allotment of \$5,000,000 will not change but will constitute changes in the purpose of the donor agreement for the Patterson accounts and the resulting removal from the endowment program and replacement of the requested accounts below that remain eligible for endowment matching funds.

Accounts originally approved in October 2012:

Patterson Foundation Chair Fund in Spears School of Business	\$1,436,440
Patterson Foundation Chair Fund in Spears School of Business **II	<u>\$3,563,560</u>
	\$5,000,000

Requested Changes:

Madeleine Pickens Chair B II	\$1,000,000
Madeliene Pickens Chair C II	\$1,000,000
Madeliene Pickens Chair D II	\$1,000,000
Madeliene Pickens Chair E II	\$1,000,000
Barry Pollard M.D./P&K Equipment Inc. Professorship in AgriBusiness II	\$ 250,000
Vennerberg Professorship in Art II	\$ 250,000
Ray & Linda Booker Professorship in Aerospace Engineering II	\$ 250,000
Greg Massey Professorship in Finance II	<u>\$ 250,000</u>
	\$5,000,000

Approved Accounts, pending action of June 27, 2013:

Institution	Chairs	Professorships	Lectureships	Total
OU	109	107		216
OU-HSC	136	39		175
OU-Tulsa	39			39
OSU	119	130		249
OSU-CHS	7	4		11
OSU Tech Okmulgee	1	1	32	34
OSU Oklahoma City			3	3
OSU Vet. Med	2	3		5
OSU-Tulsa	9	1		10
UCO	7	2	1	10
ECU	8	8	7	23
NSU	4	2	3	9
NWOSU	20	1	2	23
SEOSU	11	5	9	25
SWOSU	10	3	7	20
Cameron	10	2	54	66
Langston	2	3	3	8
USAO	1	5	2	8
CASC			21	21
EOSC		1	1	2
OCCC			1	1
NEOA&M			1	1
Northern	1		5	6
Rogers State	5	1	2	8
Rose	1	5	2	8
TCC	11	2	5	18
WOSC		4	6	10
TOTAL	<u>513</u>	<u>329</u>	<u>167</u>	<u>1009</u>

Meeting of the
OKLAHOMA STATE REGENTS FOR HIGHER EDUCATION
June 27, 2013

AGENDA ITEM #9-a:

Tuition and Fees.

SUBJECT: Approval of Institutional Requests for Changes to Academic Services Fees for Fiscal Year 2014.

RECOMMENDATION:

It is recommended that the State Regents approve all institutional requests for changes to academic services fees for Fiscal Year 2014 as reported in the supplemental schedules.

BACKGROUND:

Constitutional and Statutory Provisions for the Coordination of Higher Education Tuition and Fees

Article XIII-A of the Constitution of the State of Oklahoma establishes the Oklahoma State Regents for Higher Education as the coordinating board of control for all public institutions in The Oklahoma State System of Higher Education. Among others, specific powers enumerated include the power to prescribe and coordinate student fees and tuition within limits prescribed by the Legislature. The State Regents are authorized to 1) establish resident tuition and mandatory fees at levels less than the average rate charged at public institutions in the Big Twelve Conference for research universities and less than the average rate charged at peer institutions for regional universities and community colleges, 2) establish academic services fees, not to exceed the cost of the actual services provided, and 3) make a reasonable effort to increase need-based financial aid available to students proportionate to any increase in tuition, as well as annually report on tuition and fees.

State Regents' policy lists February 1 of each year as the deadline for submission of requests for changes in academic services fees to be charged the following academic year. Institutional requests for changes to academic services fees for Fiscal Year 2014 were posted at the State Regents' meeting held March 7, 2013. A public hearing was held on Wednesday, April 18, 2013 at the State Regents' office for the purpose of receiving views and comments on the requested changes to academic services fees and the legislative limits for resident and nonresident tuition and mandatory fees.

POLICY ISSUES:

This item is consistent with the State Regents' policy and procedures relating to tuition and student fees.

ANALYSIS:

The supplemental schedule lists institutional requests for changes to academic services fees for Fiscal Year 2014. Institutions assess special fees for instruction and academic services as a condition of enrollment and as a condition of academic recognition for completion of prescribed courses. These fees are required for all students receiving certain courses of instruction or academic services as designated by

the institution. Institutions have provided justifications for the requested increases in academic services fees, the total revenue to be collected from the fees, and the use of increased revenues.

Of the twenty-five public institutions and six constituent agencies in The State System, twenty-six requested changes in academic services fees for Fiscal Year 2014 and five had no requests for changes in these fees. Fifteen institutions have requested 47 changes in Special Instruction Fees; nine institutions have requested 38 changes in Facility/Equipment Utilization Fees; six institutions have requested 31 changes in Testing/Clinical Services Fees; fourteen institutions have requested changes in 88 Classroom/Laboratory Supply and Material Fees; and fifteen institutions have requested 79 changes in various Other Special Fees.

A total of 283 changes have been requested to academic services fees for Fiscal Year 2014, an increase of 34 requests (+13%) when compared to FY13 requests. Institutions estimate approximately \$15.31 million in new revenue will result from these changes to fees. The requests are listed in the supplement.

It is recommended that the State Regents approved these institutional requests for changes to academic services fees for Fiscal Year 2014.

(Supplement)

Meeting of the
OKLAHOMA STATE REGENTS FOR HIGHER EDUCATION
June 27, 2013

AGENDA ITEM #9-b:

Tuition and Fees.

This item will be available at the meeting.

Meeting of the
OKLAHOMA STATE REGENTS FOR HIGHER EDUCATION
June 27, 2013

AGENDA ITEM #10:

Capital.

SUBJECT: Transmittal of Capital Improvement Projects to the State of Oklahoma Long-Range Capital Planning Commission.

RECOMMENDATION:

It is recommended that the State Regents authorize the transmittal of institutional capital improvement plans for the five (5) fiscal years 2014-2019 to the State of Oklahoma Long-Range Capital Planning Commission. The institutional capital improvement plans are presented in the supplement to this agenda.

BACKGROUND:

The State of Oklahoma Long-Range Capital Planning Commission was created during the 1992 legislative session (62 O.S., Section 901). Its purpose was to establish a capital planning process that would result in an annually updated state capital improvement plan addressing all agency and institutional needs covering the next five years. The statute provides that the Oklahoma State Regents for Higher Education shall cooperate with the Commission by collecting from each institution and entity in The Oklahoma State System of Higher Education a detailed list of all capital projects anticipated for the next five years. Institutional listings identify projects that will require funding from state appropriations, as well as projects that will be self-funded by the institution from sources such as Section 13 and New College funds, revenue bond proceeds, auxiliary enterprise revenues and Section 13 Offset.

POLICY ISSUES:

None.

ANALYSIS:

Based on the information submitted by institutions and agencies, the Commission, submits prior to each legislative session, a state capital improvement plan to the Governor and legislative leadership that contains two sections. The first section includes projects identified by institutions and agencies that the Commission recommends for funding from state appropriations. The second section includes all self-funded projects that were identified by institutions and agencies.

The Commission's approach for development of a state capital improvement plan focuses on projects for which state appropriations are required. The Commission's evaluation process has, in prior years, placed a high priority on projects relating to telecommunications and technology, asset preservation, health and safety, and renovation of facilities.

A total of 787 capital projects are identified by State System institutions for submission to the Commission. These projects are summarized below by funding source. The report categorizes the

institutions' submitted project needs by the following funding categories: 1.) State Funds; 2.) Section 13 Offset Funds; 3.) General Obligation Bonds; 4.) Federal Funds; 5.) Revolving Funds; 6.) Gifts and Grants; 7.) Revenue Bond Funds; 8) Section 13 Funds, and 9.) Other Funds, including Oil Overcharge Funds and any other funding sources not listed.

<u>Source of Funds</u>	<u>Total</u>
State Funds	\$1,383,550,827
Section 13 Offset Funds	70,599,561
G.O. Bond Funds	148,607,317
Federal Funds	147,482,144
Revolving Funds	136,696,188
Gifts and Grant Funds	470,657,841
Revenue Bond Funds	702,169,878
Section 13 Funds	124,612,661
Other Funds	2,655,746,364
Total	\$5,840,122,781

Meeting of the
OKLAHOMA STATE REGENTS FOR HIGHER EDUCATION
June 27, 2013

AGENDA ITEM #11:

Policy.

SUBJECT: Approval of Amendments to the Chapter 4 –Budget and Fiscal Affairs Policy.

RECOMMENDATION:

It is recommended that the State Regents approve the amendments to the Chapter 4 – Budget and Fiscal Affairs Policy to include updates as prescribed by current state statutes and incorporation of new policy language.

BACKGROUND:

The State Regents Chapter 4- Budget and Fiscal Affairs Policy provides guidance's on all aspects of the fiscal administration of the State System of Higher Education. In 2006 a comprehensive review and update of the State Regents' entire policy manual was undertaken. Since that time, various components of the Chapter 4 – Fiscal policy have been updated as necessary. These proposed changes are comprehensive in nature to address required changes needed through the entire chapter to bring the statutory references up-to-date, incorporate policy in relation to current practices, deletion of outdated policy and to incorporate relevant references as required. This proposed amendments were posted at the May 31, 2013, meeting of the State Regents.

POLICY ISSUES:

The proposed policy amendments are provided as a supplement and require State Regents' approval.

ANALYSIS:

The proposed policy updates are summarized below:

- In April 2012, the State Regents accepted the recommendations of the Council of President's Budget Formula Taskforce to move to a performance-based funding formula. This proposed policy draft incorporates those approved recommendations into the fiscal policy chapter. The major components of new policy include: (1) the replace the peer factor components with performance-based incentives, (2) the hold harmless provision remains intact as the new formula will be applied to new monies as allocated by the State Regents' to the funding formula, (3) provides for equity based adjustments for institutions that are below one standard deviation of the tier or system per FTE average, and (4) the incorporation of the Complete College America goals for our institutions.
- The *Brain Gain Policy*, originally adopted in June 2002, has become obsolete and is recommended for deletion. After approval of this deletion, the remaining fiscal policies subsequent to the current Brain Gain policy in numbering format will be renumbered.

- Proposed changes include all references to the Office of State to the new nomenclature of the Office of Management and Enterprise Systems. Associated changes are also the references from the old Director of State Finance, to the current reference of the Director of the Office of Management and Enterprise Systems.
- The references to the sections in O.S. Title 62 Oklahoma Budget Law, throughout Chapter 4, have been updated to reflect the renumbering and recodification of section numbers as approved by the legislature.
- All dates previously noted in our statutory references have been removed so that policy remains current even as the statute publication dates change.
- The specific references to the GASB Statements in the *Disclosure of Pension Information* have been removed as they are now obsolete as more current statements have been issued. The proposal is written to provide a generic reference to the necessary GASB statements that govern disclosure issues.
- The Tuition Policy section on Waivers for Dependents of Peace Officers, Fire fighters and Emergency Technicians has been edited for clarification and emphasis of inclusion of a statutory reference for room and board waivers for commissioned member's dependents of the Oklahoma Law Enforcement Retirement System at the time of their death.
- Additional very minor edits are included as clean-up and scrivener's preferences.

Meeting of the
OKLAHOMA STATE REGENTS FOR HIGHER EDUCATION
June 27, 2013

AGENDA ITEM #12:

Purchasing.

SUBJECT: Approval of FY-2014 Purchases in excess of \$100,000.

RECOMMENDATION:

It is recommended that the State Regents approve FY-2014 purchases for amounts that are in excess of \$100,000 that need to be effective July 1, 2013.

BACKGROUND:

Agency purchases are presented for State Regents' action. They relate to previous board action and the approved agency budgets.

POLICY ISSUES:

The recommended action is consistent with the State Regents' purchasing policy which requires State Regents' approval of purchases in excess of \$100,000.

ANALYSIS:

A number of agency purchases for equipment maintenance, network circuits, lease of office space, memberships, professional services, postage etc. must be in place on July 1st of each year due to vendor requirements for renewal or payments that must be made in July. Many of these purchases will be in excess of \$100,000 and require State Regents' approval prior to issuing a purchase order.

Purchases Over \$100,000

Core

- 1) EBSCO Publishing in the amount of \$334,907 for annual subscriptions to Business Source Premier and PsycINFO databases. (Funded from 210-Core).

OCAP

- 2) Sallie Mae in the amount of \$7,065,000 for use of an integrated software system and services for administering student loans. (Funded from 701-OCAP).

OneNet

- 3) Expenditure Request from OneNet to purchase Adva optical Equipment in the amount of \$700,000 for the 100 Gig network backbone upgrade between Tulsa, Oklahoma City and Norman. The requested amount represents the second phase that will provide University of Oklahoma with bandwidth capabilities to support their scientific research needs. (Funded from 718-OneNet).

- 4) AT&T in the amount of \$6,890,321 for customer and network infrastructure circuits. (Funded from 718-OneNet).
- 5) Cox in the amount of \$1,386,117 for customer and network infrastructure circuits. (Funded from 718-OneNet).
- 6) Indian Nations Fiber Optics in the amount of \$794,982 for customer and network infrastructure circuits. (Funded from 718-OneNet).
- 7) Dobson Communications in the amount of \$470,451 for customer and network infrastructure circuits. (Funded from 718-OneNet).
- 8) MBO Corporation in the amount of \$814,095 for customer and network infrastructure circuits. (Funded from 718-OneNet).
- 9) Pine Telephone in the amount of \$100,800 for customer and network infrastructure circuits. (Funded from 718-OneNet).
- 10) Pioneer Long Distance Inc in the amount of \$137,844 for customer and network infrastructure circuits. (Funded from 718-OneNet).
- 11) Panhandle Telephone Communications in the amount of \$152,676 for customer and network infrastructure circuits. (Funded from 718-OneNet).
- 12) Windstream Communications in the amount of \$136,441 for customer and network infrastructure circuits. (Funded from 718-OneNet).
- 13) CenturyLink Communications in the amount of \$112,770 for Commodity Internet. (Funded from 718-OneNet).
- 14) Presidio Corporation in the amount \$302,198 for Annual Cisco SMARTnet maintenance renewal for Cisco Communications Equipment used in the OneNet network. (Funded from 718-OneNet).
- 15) Indiana University Global Research Network Operating Center (GRNOC) in the amount of \$257,805 for network management and helpdesk support for the OneNet network and OneNet Customers. (Funded from 718-OneNet).
- 16) SKC Communications Products in the amount of \$138,000 for annual maintenance renewal for HD video conferencing equipment which provides video switching for distance learning class room instruction and conference calls. This equipment supports higher education institutions, state agencies, and K-12 schools. Other video equipment included in the acquisition supports State Regents Offices and Conference Rooms used for teleconferencing. (Funded from 718-OneNet).

Various Funds

- 17) MIG & Company not to exceed \$700,000 for software development services, software licensing, and support for the replacement of the Banner Financial and Payroll / Human Resources system. The primary goal of replacing the Banner system, in use since 1999, is to migrate to a

more modern and robust accounting and payroll solution that offers the following benefits: comprehensive and flexible financial reporting, better overall business process fit, enhanced support and customization, and significant reduction in annual maintenance fees and total cost of ownership. Annual maintenance for the existing Banner system exceeds \$100,000 and increases significantly each year. Support and annual maintenance for the proposed replacement system will be approximately \$50,000 and will include enhanced support services. Initial interaction and vetting of references for the vendor (MIG & Co.) and software solution has been very positive. In addition, a full Proof of Concept approach is planned that will limit our initial project costs to approximately \$70,000 and will allow both the replacement system and the implementation vendor to be fully evaluated. Approval of the Proof of Concept results will be required before the implementation of the replacement system begins and before the commitment of the bulk of the funding for the project. (Fund from 210-Core, 701-OCAP, and 718-OneNet).

Meeting of the
OKLAHOMA STATE REGENTS FOR HIGHER EDUCATION
June 27, 2013

AGENDA ITEM #13:

Investments.

This item will be available at the meeting.

Meeting of the
OKLAHOMA STATE REGENTS FOR HIGHER EDUCATION
June 27, 2013

AGENDA ITEM #14-a:

New Programs.

SUBJECT: University of Oklahoma. Approval to offer the Master of Science in Environmental Sustainability in Environmental Sustainability, the Bachelor of Arts in Lifespan Care Administration, the Graduate Certificate in Women's and Gender Studies (371) in Tulsa, and the Graduate Certificate in Business Entrepreneurship.

RECOMMENDATION:

It is recommended that the State Regents approve the University of Oklahoma's requests to offer the Master of Science in Environmental Sustainability, the Bachelor of Arts in Lifespan Care Administration in Lifespan Care Administration in a traditional and electronic media format, the existing Graduate Certificate in Women's and Gender Studies (371) in Tulsa, and the Graduate Certificate in Business Entrepreneurship with the stipulation that continuation of the programs will depend upon meeting the criteria established by the institution and approved by the State Regents, as described below.

- **Master of Science in Environmental Sustainability in Environmental Sustainability.** Continuation beyond Fall 2018 will depend upon meeting the following criteria:
 - Majors enrolled: a minimum of 7 students in Fall 2017; and
 - Graduates: a minimum of 3 students in 2017-2018.
- **Bachelor of Arts in Lifespan Care Administration in Lifespan Care Administration.** Continuation beyond Fall 2015 will depend upon meeting the following criteria:
 - Majors enrolled: a minimum of 15 students in Fall 2014; and
 - Graduates: a minimum of 5 students in 2014-2015.
- **Graduate Certificate in Women's and Gender Studies (371).** Continuation beyond Fall 2014 will depend upon meeting the following criteria:
 - Majors enrolled: a minimum of 9 students in Fall 2013; and
 - Graduates: a minimum of 4 students in 2013-2014.
- **Graduate Certificate in Business Entrepreneurship.** Continuation beyond Fall 2017 will depend upon meeting the following criteria:
 - Majors enrolled: a minimum of 6 students in Fall 2016; and
 - Graduates: a minimum of 3 students in 2016-2017.

BACKGROUND:

Academic Plan

The University of Oklahoma’s (OU) Academic Plan lists the following institutional priorities and new funding initiatives:

- Continue aggressive recruitment of large freshmen classes and improve the processing of graduate student applications for admission.
- Continue improving the undergraduate retention and graduate rates by 1) utilizing the holistic admissions to be able to provide early invention/mentoring/tutoring for students whose profiles suggest they will profit from such aggressive intervention, 2) increase the coordination of undergraduate academic advising across campus, and 3) enhance course offerings during the summer session. Additionally, we will work to get undergraduate students actively working towards a timely and, therefore, more efficient timeline for their degree completion.
- Continue to manage undergraduate course offerings to adequately meet student needs for courses by requiring course sections to be fully enrolled and by adding sections as needed to meet student demand by utilizing qualified instructors, lecturers, and other adjunct instructors

APRA Implementation

In August 1991, the State Regents launched the Academic Planning/Resource Allocation (APRA) initiative, which was based on the principle that institutional officials would prioritize their programs and activities, and then fund higher priority activities at levels that ensured quality. In times of flat or declining budgets or financial constraints, institutions are expected to reallocate resources from lower priority activities to higher priority activities, rather than reducing quality by funding lower priority activities at the same rate as higher priority activities.

Since 1992, OU has taken the following program actions in response to APRA:

81	Degree and/or certificate programs deleted
66	Degree and/or certificate programs added

Program Review

OU offers 261 degree and/or certificate programs as follows:

11	Certificates
0	Associate of Arts or Sciences Degrees
0	Associate of Applied Science Degrees
111	Baccalaureate Degrees
86	Master’s Degrees
53	Doctoral Degrees
0	First Professional Degrees

All of these programs were reviewed in the past five years with the exception of those programs with specialty accreditation. Programs with specialty accreditation are aligned with OU’s program review schedule as appropriate. Thus, if a professional program received a ten-year accreditation, it would not be reviewed for ten years, which is an approved exception to State Regents’ policy.

Program Development Process

OU's faculty developed the proposals, which were reviewed and approved by institutional officials. OU's governing board approved delivery of the Master of Science in Environmental Sustainability, the Bachelor of Arts in Lifespan Care Administration, the Graduate Certificate in Women's and Gender Studies (371), and the Graduate Certificate in Business Entrepreneurship at the March 27, 2013 meeting. OU requests authorization to offer these degrees and certificate, as outlined below.

OU is currently approved to offer the following degree programs via electronic media:

- Bachelor of Arts in Administrative Leadership (375);
- Bachelor of Arts in Information Studies (343);
- Bachelor of Arts in Liberal Studies (231);
- Bachelor of Arts in World Cultural Studies (390);
- Bachelor of Science in Criminal Justice (365);
- Certificate in Human Resource Diversity and Development (340);
- Master of Arts in Administrative Leadership (373);
- Master of Arts in Liberal Studies (232);
- Master of Environmental Science (076);
- Master of Library and Information Studies (151);
- Master of Prevention Science (374);
- Master of Science in Criminal Justice (391);
- Master of Science in Civil Engineering (038);
- Master of Science in Construction Administration in Construction Administration (243);
- Master of Science in Knowledge Management (347); and
- Master of Legal Studies in Legal Studies (149).

POLICY ISSUES:

This action is consistent with the Academic Program Approval policy and the Electronically Delivered and Traditional Off-Campus Courses and Programs policy.

Policy allows institutions with approved electronic media delivered programs or grandfathered status to request programs through an abbreviated process. The process calls for the President to send the following information to the Chancellor: 1) letter of intent, 2) the name of the program, 3) delivery method(s), 4) information related to population served and student demand, and 5) cost and financing.

ANALYSIS:

Master of Science in Environmental Sustainability in Environmental Sustainability

Program purpose. The purpose of the proposed degree program is to provide students with advanced education in environmental sustainability to become leaders in research, decision-making, and policies that guide the governance and management of both current and future environmental resources.

Program rationale and background. In October 2012, the State Regents approved the Bachelor of Science in Environmental Sustainability in Environmental Sustainability (382) and the Bachelor of Arts in Environmental Sustainability in Environmental Sustainability (381). These programs provide students the skills and knowledge needed to meet the complex current and emerging environmental challenges in water resources, energy systems, land use, and climate variability and change. While student interest in these programs is strong, the workforce of the twenty-first century requires not only students with undergraduate degrees to fill entry-level positions, but also persons with graduate degrees who can fill positions of leadership. The proposed program is designed to meet this need and complement OU's existing undergraduate programs.

Employment opportunities. In 2012, the Massachusetts Institute of Technology Sloan Review released a publication titled “Sustainability Nears a Tipping Point” in which it states that a substantial portion of companies not only are finding the need for sustainable business practices, but also are deriving financial benefits from these practices. The review also surveyed 2,874 managers and executives from 113 countries and found that two-thirds of the respondents indicate that sustainability was critically important to being competitive in today’s market. However, because sustainability is an emerging and rapidly growing field, many companies and organizations lack the personnel with adequate knowledge and training to implement strategies to address their needs. Graduates of the program can pursue careers as sustainability officers, waste management consultants, sustainable urban planners, and regulatory compliance officers and will be able to meet the workforce demand. According to Oklahoma labor market statistics, jobs within the environmental and conservation sectors are expected to increase 10 to 13 percent from 2010 to 2020. OU is confident that graduates of the proposed degree program will find employment within the discipline.

Student demand. The proposed degree program is expected to meet the enrollment and graduate standards by the established deadline prior to final approval by the State Regents as shown in the following table.

Productivity Category	Criteria	Deadline
Minimum Enrollment of majors in the program	7	Fall 2017
Minimum Graduates from the program	3	2017-2018

Duplication and impact on existing programs. There are no Master of Science in Environmental Sustainability in Environmental Sustainability programs offered in Oklahoma. A system wide letter of intent was communicated by email on March 11, 2013. None of the State System institutions notified State Regents’ staff of a protest to the proposed degree program. Approval will not constitute unnecessary duplication.

Curriculum. The proposed degree program will consist of 30 total credit hours each as shown in the following table. Five new courses will be added and the curriculum is detailed in the attachment (Attachment A).

Content Area	Credit Hours
Core Courses	15
Guided Electives	9
General Electives	6
Total	30

Faculty and staff. Existing faculty will teach the proposed degree program.

Support services. The library, facilities, and equipment are adequate for this degree program.

Financing. The proposed degree program will be offered on a self-supporting basis and the current tuition and fee structure will be sufficient to adequately fund the program. No additional funding is requested from the State Regents to support the degree program.

Program resource requirements. Program resource requirements for the Master of Science in Environmental Sustainability in Environmental Sustainability are shown in the following tables.

A. Funding Sources	Year of Program				
	1st Year	2nd Year	3rd Year	4th Year	5th Year
Total Resources Available from Federal Sources	\$0	\$0	\$0	\$0	\$0
Total Resources Available from Other Non-State Sources	\$0	\$0	\$0	\$0	\$0
Existing State Resources	\$0	\$0	\$0	\$0	\$0
State Resources Available through Internal Allocation and Reallocation	\$134,212	\$134,212	\$134,212	\$134,212	\$134,212
Narrative/Explanation: Ten percent of 1.0 FTE faculty salary and fringe benefits plus 20 percent of the Administrative Coordinator's salary and fringe benefits are expected to be reallocated to the proposed program.					
Student Tuition	\$2,833	\$15,669	\$21,335	\$24,168	\$27,001
Narrative/Explanation: Each student who enters the program will generate a minimum of 15 credit hours of tuition and fees each academic year. Tuition calculation was based on \$175.00 per credit hour for resident tuition and \$653.00 per credit hour for non-resident tuition, as well as a College fee of \$41.50 for each graduate course. OU anticipates 1 non-resident student enrolling each academic year beginning with year 2.					
TOTAL	\$137,045	\$149,881	\$155,547	\$158,380	\$161,213

B. Breakdown of Budget Expenses/Requirements	Year of Program				
	1st Year	2nd Year	3rd Year	4th Year	5th Year
Administrative/Other Professional Staff	\$15,136	\$15,136	\$15,136	\$15,136	\$15,136
Narrative/Explanation: Twenty percent of the Administrative Coordinator's salary plus fringe benefits will be used to support the proposed program.					
Faculty	\$120,550	\$120,550	\$120,550	\$120,550	\$120,550
Narrative/Explanation: Ten percent of 1.0 FTE faculty salary plus fringe benefits will be allocated to support the proposed program.					
Graduate Assistants	\$0	\$0	\$0	\$0	\$0
Student Employees	\$0	\$0	\$0	\$0	\$0
Equipment and Instructional Materials	\$0	\$0	\$0	\$0	\$0
Library	\$0	\$0	\$0	\$0	\$0
Contractual Services	\$0	\$0	\$0	\$0	\$0
Other Support Services	\$0	\$0	\$0	\$0	\$0
Commodities	\$0	\$0	\$0	\$0	\$0
Printing	\$300	\$300	\$300	\$300	\$300
Narrative/Explanation: Funds will be used for printing degree requirements and recruitment materials.					
Telecommunications	\$0	\$0	\$0	\$0	\$0
Travel	\$250	\$250	\$250	\$250	\$250
Narrative/Explanation: Funds will be used for travel costs associated with recruitment.					
Awards and Grants	\$0	\$0	\$0	\$0	\$0
TOTAL	\$136,486	\$136,486	\$136,486	\$136,486	\$136,486

Bachelor of Arts in Lifespan Care Administration in Lifespan Care Administration

Program purpose. The purpose of this proposed degree program is to prepare students for leadership roles in organizations and institutions that provide human services and health care across the range of human development.

Program rationale and background. An increasing number of individuals will find themselves in need of residential care at some point in their lives. These facilities can be very helpful when well-managed and properly staffed. However, when not well-managed, they can be incredibly detrimental. The proposed degree program was designed as an interdisciplinary program focusing on best-practice standards in care-giving at all levels. The curriculum and electronic delivery method was designed to appeal to individuals who are currently employed as caregivers or who desire employment in a care-giving facility. Additionally, the curriculum is designed to offer students course options that will allow maximum flexibility in job placement and career paths. Graduates of the degree program will be able to provide high-quality care in whatever living facility they are employed.

Employment opportunities. Graduates of the proposed degree program can seek employment at all levels of health services administration. According to the Occupational Outlook Handbook, jobs in the medical and health services management sector are expected to increase 22 percent from 2010 to 2020. Similarly, jobs in child care administration are expected to increase 25 percent during this same time period. In Oklahoma, labor market statistics indicate that careers in nursing and residential care facilities are expected to increase nearly 26 percent. However, the educational qualifications for entry-level positions are expected to tighten so that those not holding a baccalaureate degree will find it increasingly difficult to secure these positions. To further validate employer need, OU's College of Liberal Studies commissioned a market study with EduVentures. The findings of the study indicated a significant need for individuals with the type of administrative credential provided by the proposed degree program. Additionally, supervisory personnel in the Oklahoma Department of Human Services, as well as various healthcare providers across Oklahoma, have communicated with OU regarding the demand for this type of degree program, especially one delivered online to place-bound students seeking to complete their education. OU is confident that graduates of the proposed degree program will secure employment within the industry.

Student demand. The proposed degree program is expected to meet the enrollment and graduate standards by the established deadline prior to final approval by the State Regents as shown in the following table.

Productivity Category	Criteria	Deadline
Minimum Enrollment of majors in the program	15	Fall 2014
Minimum Graduates from the program	5	2014-2015

Duplication and impact on existing programs. There are no Bachelor of Arts in Lifespan Care Administration programs offered in Oklahoma. A system wide letter of intent was communicated by email on March 11, 2013. None of the State System institutions notified State Regents' staff of a protest to the proposed degree program. Approval will not constitute unnecessary duplication.

Curriculum. The proposed degree program will consist of 120 total credit hours as shown in the following table. Twenty-one new courses will be added and the curriculum is detailed in the attachment (Attachment B).

Content Area	Credit Hours
General Education	40
Major Requirements	45
Electives	35
Total	120

Faculty and staff. Existing faculty will teach the proposed degree program.

Delivery method and support services. The program will be offered in an online format using a variety of software suites and individual course websites. OU will meet academic standards outlined in policy required to ensure the quality of the degree program. Academic standards include faculty training, student services, and other support services including library, facilities and computing equipment containing a variety of software suites necessary to support the program.

Financing. The proposed graduate certificate program will be offered on a self-supporting basis and the current tuition and fee structure will be sufficient to adequately fund the program. No additional funding is requested from the State Regents to support the degree program.

Program resource requirements. Program resource requirements for the Bachelor of Arts in Lifespan Care Administration are shown in the following tables.

A. Funding Sources	Year of Program				
	1 st Year	2 nd Year	3 rd Year	4 th Year	5 th Year
Total Resources Available from Federal Sources	\$0	\$0	\$0	\$0	\$0
Total Resources Available from Other Non-State Sources	\$0	\$0	\$0	\$0	\$0
Existing State Resources	\$0	\$0	\$0	\$0	\$0
State Resources Available through Internal Allocation and Reallocation	\$0	\$0	\$0	\$0	\$0
Student Tuition	\$23,250	\$69,750	\$93,000	\$116,250	\$139,500
Narrative/Explanation: Funds received from tuition generation are based on students completing 30 credit hours each academic year with an estimated tuition rate of \$155.00 per credit hour.					
TOTAL	\$23,250	\$69,750	\$93,000	\$116,250	\$139,500

B. Breakdown of Budget Expenses/Requirements	Year of Program				
	1 st Year	2 nd Year	3 rd Year	4 th Year	5 th Year
Administrative/Other Professional Staff	\$3,000	\$15,000	\$25,000	\$40,000	\$50,000
Narrative/Explanation: The amounts shown will be used for staff salary based on a proportion of FTE associated with this program.					
Faculty	\$18,000	\$38,000	\$50,000	\$60,000	\$70,000
Narrative/Explanation: The amounts shown will be used toward faculty salaries based on estimated course enrollments and utilizing designated pay rates per course.					

Graduate Assistants	\$0	\$0	\$0	\$0	\$0
Student Employees	\$0	\$0	\$0	\$0	\$0
Equipment and Instructional Materials	\$0	\$0	\$0	\$0	\$0
Library	\$0	\$0	\$0	\$0	\$0
Contractual Services	\$0	\$0	\$0	\$0	\$0
Other Support Services	\$0	\$0	\$0	\$0	\$0
Commodities	\$0	\$0	\$0	\$0	\$0
Printing	\$500	\$1,500	\$2,000	\$2,000	\$2,000
Narrative/Explanation: Cost for printing brochures and informational items to market the program.					
Telecommunications	\$750	\$2,000	\$2,500	\$3,000	\$3,500
Narrative/Explanation: Estimated costs to develop additional webpages and digital marketing initiatives for this program.					
Travel	\$1,000	\$3,000	\$4,000	\$8,000	\$8,000
Narrative/Explanation: Travel budget for initial recruitment activities and faculty development travel.					
Awards and Grants	\$0	\$0	\$0	\$0	\$0
TOTAL	\$23,250	\$59,500	\$83,500	\$113,000	\$133,500

Graduate Certificate in Women's and Gender Studies (371)

Program purpose. This purpose of this proposed graduate certificate is to provide students in Tulsa with an interdisciplinary curriculum that will broaden and/or give specialty focus to students interested in Women's and Gender Studies.

Program rationale and background. The Graduate Certificate in Women's and Gender Studies (371) was approved by the State Regents at the June 25, 2009 meeting. Since the program's implementation, ten students have completed the course work and currently 27 students are enrolled at the Norman campus. In Fall 2011, the director of the program was approached by faculty and students at the Tulsa campus who expressed strong interest in extending the program to the Tulsa area. The curriculum will augment and provide formal recognition to students' course work in this area, thereby enhancing their success in the academic and professional job markets.

Employment opportunities. According to OU there is a strong demand, both nationally and locally, for academic careers in Women's and Gender Studies. Most of these positions require evidence of graduate training in the discipline. Other positions are for joint appointments within the social science or humanities discipline. Thus, a graduate certificate in Women's and Gender Studies provides an advantage to candidates in the academic job market. Additionally, the graduate certificate is not only useful in securing academic employment. Recently OU conducted a search of available positions in the non-profit sector and found 605 openings that required or gave preference to applicants with training in Women's and Gender Studies. These positions range from international non-governmental organizations to numerous social service agencies operating at the local and national levels. OU is confident that there will be sufficient employment opportunities for graduates of this program.

Student demand. The proposed graduate certificate program is expected to meet the enrollment and graduate standards in Tulsa by the established deadline prior to final approval by the State Regents as shown in the following table.

Productivity Category	Criteria	Deadline
Minimum Enrollment of majors in the program	9	Fall 2013
Minimum Graduates from the program	4	2013-2014

Duplication and impact on existing programs. Consistent with the recently developed OSRHE plan for review of academic programs delivered in the immediate Tulsa area by Oklahoma public universities and colleges, this certificate program has been reviewed to ensure no unjustifiable program duplication and to ensure that the needs of all Tulsa area students are met. This review is consistent with the Academic Program Approval policy and involves consideration of student and employer demand for the program, demand for services or intellectual property of the program, and alternative forms of delivery and consortial or joint programs. Where other similar programs may serve the same potential student population, evidence must demonstrate that the proposed program (whether or not it is a new academic program or an extension of an existing program) is sufficiently different from the existing program(s) offered by other institutions or that access to the existing program(s) is sufficiently limited to warrant initiation of a new program offering.

There are no Graduate Certificate in Women’s and Gender Studies programs offered in Oklahoma. A system wide letter of intent was communicated by email on January 25, 2013. None of the State System institutions notified State Regents’ staff of a protest to the proposed certificate program. Due to demand demonstrated by OU, no other duplicate programs, and OU’s statewide mission, approval of this program to be offered by OU in Tulsa will not constitute unnecessary duplication. This academic program and all other postsecondary programs in the state system currently delivered in the immediate Tulsa area will be inventoried and tracked for performance as a part of the annual Tulsa Accountability Report designed to monitor academic program delivery and productivity statistics for institutions in the Tulsa area.

Curriculum. The proposed graduate certificate program will consist of 13 total credit hours as shown in the following table. No new courses will be added and the curriculum is detailed in the attachment (Attachment C).

Content Area	Credit Hours
Core Courses	4
Specialty Electives	9
Total	13

Faculty and staff. Existing faculty will teach the proposed graduate certificate program.

Financing. The proposed graduate certificate program will be offered on a self-supporting basis and the current tuition and fee structure will be sufficient to adequately fund the program. No additional funding is requested from the State Regents to support the program.

Program resource requirements. Program resource requirements for the Graduate Certificate in Women’s and Gender Studies (371) are shown in the following tables.

A. Funding Sources	Year of Program				
	1 st Year	2 nd Year	3 rd Year	4 th Year	5 th Year
Total Resources Available from Federal Sources	\$0	\$0	\$0	\$0	\$0

A. Funding Sources	Year of Program				
	1st Year	2nd Year	3rd Year	4th Year	5th Year
Total Resources Available from Other Non-State Sources	\$0	\$0	\$0	\$0	\$0
Existing State Resources	\$0	\$0	\$0	\$0	\$0
State Resources Available through Internal Allocation and Reallocation	\$0	\$0	\$0	\$0	\$0
Student Tuition	\$9,800	\$9,800	\$9,800	\$11,025	\$11,025
Narrative/Explanation: Tuition was based on 8 students for the first 3 years and 9 students for years 4 and 5. OU anticipates each student completing 7 credit hours each academic year. The tuition rate used in the calculations is \$175.00 per credit hour.					
TOTAL	\$9,800	\$9,800	\$9,800	\$11,025	\$11,025

B. Breakdown of Budget Expenses/Requirements	Year of Program				
	1st Year	2nd Year	3rd Year	4th Year	5th Year
Administrative/Other Professional Staff	\$1,333	\$1,333	\$1,333	\$2,000	\$2,000
Narrative/Explanation: OU anticipates one staff person spending 80 hours per academic year for years 1 through 3 and 120 hours per academic year for years 4 and 5 supporting the certificate.					
Faculty	\$6,600	\$6,600	\$6,600	\$6,600	\$6,600
Narrative/Explanation: Amount shown reflects the percentage of the faculty's salary used to teach students in the Tulsa area.					
Graduate Assistants	\$0	\$0	\$0	\$0	\$0
Student Employees	\$0	\$0	\$0	\$0	\$0
Equipment and Instructional Materials	\$0	\$0	\$0	\$0	\$0
Library	\$0	\$0	\$0	\$0	\$0
Contractual Services	\$0	\$0	\$0	\$0	\$0
Other Support Services	\$0	\$0	\$0	\$0	\$0
Commodities	\$0	\$0	\$0	\$0	\$0
Printing	\$100	\$100	\$100	\$125	\$125
Narrative/Explanation: The amount above reflects the budget for printing degree sheets for the certificate.					
Telecommunications	\$0	\$0	\$0	\$0	\$0
Travel	\$0	\$0	\$0	\$0	\$0
Awards and Grants	\$0	\$0	\$0	\$0	\$0
TOTAL	\$8,033	\$8,033	\$8,033	\$8,725	\$8,725

Graduate Certificate in Business Entrepreneurship

Program purpose. The purpose of this proposed graduate certificate is to provide students with the knowledge and skills needed to develop new entrepreneurial opportunities.

Program rationale and background. OU’s Michael F. Price College of Business has been offering an Entrepreneurship and Venture Management option through its Bachelor of Business Administration in Management and Human Resources (168) program for many years and has maintained strong enrollment. Entrepreneurship programs offer a balance of content, critical thinking skills, hands-on course work, innovation-based projects, leadership/communication skills, and interpersonal/team skills. The proposed graduate certificate is designed to be complementary to existing graduate degrees and seeks students from disciplines like engineering, meteorology, architecture, medicine, and other sciences interested in developing marketable solutions to today’s problems. The curriculum consists of existing courses offered in the Master of Business Administration in Business Administration (025) program.

Employment opportunities. Graduates of OU’s Bachelor of Business Administration in Management and Human Resources (168) with an option in Entrepreneurship and Venture Management have found jobs in areas such as medical, alternative energy, consulting, financial services, meteorology, or software development. Some of the Oklahoma companies that have hired recent graduates include Chesapeake, Gulfport, Bankfirst, and JP Morgan and Chase. Students with entrepreneurship training are very well received by prospective employers and can find employment in a variety of industries. However, I2E, the central agency working with ventures, has repeatedly noted the lack of qualified employees, specifically for technological innovations. OU anticipates that majority of the students pursuing this program will be co-enrolled in other graduate degrees, particularly technology-based programs, and use the proposed graduate certificate to complement their major focus and provide them with additional marketable skills. OU is confident that the proposed graduate certificate will provide students with knowledge and training that will make them more competitive in the job market.

Student demand. The proposed graduate certificate program is expected to meet the enrollment and graduate standards by the established deadline prior to final approval by the State Regents as shown in the following table.

Productivity Category	Criteria	Deadline
Minimum Enrollment of majors in the program	6	Fall 2016
Minimum Graduates from the program	3	2016-2017

Duplication and impact on existing programs. The proposed graduate certificate would duplicate the following existing program:

Institution	Existing Program
Oklahoma State University	Graduate Certificate in Entrepreneurship (492)

A system wide letter of intent was communicated by email on March 11, 2013. Oklahoma State University requested a copy of the proposal, which was sent via email on April 5, 2013. Neither OSU nor the other State System institutions notified State Regents’ staff of a protest to the proposed graduate certificate program. Due to distance between institutions, anticipated student demand, and continued employment opportunities approval will not constitute unnecessary duplication.

Curriculum. The proposed graduate certificate program will consist of 12 total credit hours as shown in the following table. No new courses will be added and the curriculum is detailed in the attachment (Attachment D).

Content Area	Credit Hours
Core Courses	4
Guided Electives	6
General Electives	2
Total	12

Faculty and staff. Existing faculty will teach the proposed graduate certificate program.

Financing. The proposed graduate certificate program will be offered on a self-supporting basis and the current tuition and fee structure will be sufficient to adequately fund the program. No additional funding is requested from the State Regents to support the program.

Program resource requirements. Program resource requirements for the Graduate Certificate in Business Entrepreneurship are shown in the following tables.

A. Funding Sources	Year of Program				
	1 st Year	2 nd Year	3 rd Year	4 th Year	5 th Year
Total Resources Available from Federal Sources	\$0	\$0	\$0	\$0	\$0
Total Resources Available from Other Non-State Sources	\$0	\$0	\$0	\$0	\$0
Existing State Resources	\$15,708	\$15,708	\$16,416	\$16,416	\$16,416
Narrative/Explanation: The amounts above reflect the percentage of the salary for both faculty and the Managerial Associate to perform administrative duties related to support the graduate certificate.					
State Resources Available through Internal Allocation and Reallocation	\$0	\$0	\$0	\$0	\$0
Student Tuition	\$1,400	\$2,800	\$3,500	\$4,200	\$4,200
Narrative/Explanation: Tuition was calculated based on students completing 4 credit hours per academic year and a tuition rate of \$175.00 per credit hour.					
TOTAL	\$17,108	\$18,508	\$19,916	\$20,616	\$20,616

B. Breakdown of Budget Expenses/Requirements	Year of Program				
	1 st Year	2 nd Year	3 rd Year	4 th Year	5 th Year
Administrative/Other Professional Staff	\$708	\$708	\$1,416	\$1,416	\$1,416
Narrative/Explanation: The amounts above reflect the percentage of the salary for the Managerial Associate to perform administrative duties to support the graduate certificate.					
Faculty	\$15,000	\$15,000	\$15,000	\$15,000	\$15,000
Narrative/Explanation: The amounts above reflect the percentage of the faculty salary of two faculty members. Courses will be taught by both full-time and adjunct faculty.					
Graduate Assistants	\$0	\$0	\$0	\$0	\$0
Student Employees	\$0	\$0	\$0	\$0	\$0
Equipment and Instructional Materials	\$0	\$0	\$0	\$0	\$0

Library	\$0	\$0	\$0	\$0	\$0
Contractual Services	\$0	\$0	\$0	\$0	\$0
Other Support Services	\$0	\$0	\$0	\$0	\$0
Commodities	\$0	\$0	\$0	\$0	\$0
Printing	\$0	\$0	\$0	\$0	\$0
Telecommunications	\$0	\$0	\$0	\$0	\$0
Travel	\$0	\$0	\$0	\$0	\$0
Awards and Grants	\$0	\$0	\$0	\$0	\$0
TOTAL	\$15,708	\$15,708	\$16,416	\$16,416	\$16,416

Attachments

ATTACHMENT A

**UNIVERSITY OF OKLAHOMA
MASTER OF SCIENCE IN ENVIRONMENTAL SUSTAINABILITY IN
ENVIRONMENTAL SUSTAINABILITY**

Degree Requirements	Credit Hours
Core	15
*GEOG 5433 Environmental Sustainability-Theory and Practice	3
*GEOG 5243 Systems Thinking and Knowledge Integration	3
*GEOG 5253 Economics of Sustainability	3
GEOG 5333 Corporate Environmental Strategy	3
GEOG 5543 Life Cycle Analysis	3
Guided Electives	9
Students must complete 9 credit hours from the following according to their area of interest	
*GEOG 5143 Ecosystem Services-Theory and Practice	3
PSC 6143 Organizational Behavior (Learning)	3
GEOG 5453 Geographic Information Systems	3
GEOG 5113 Statistics	3
LAW 6100 Environmental Law and Policy	3
GEOG 5583 Renewable Energy Resources	3
*GEOG 5200 Internship	1-3
General Electives	6
Students must complete 6 credit hours as approved by the graduate liaison and advisory committee	
Total	30

*Asterisks denote new courses

ATTACHMENT B

**UNIVERSITY OF OKLAHOMA
BACHELOR OF ARTS IN LIFESPAN CARE ADMINISTRATION
IN LIFESPAN CARE ADMINISTRATION**

Degree Requirements		Credit Hours
General Education Courses		Minimum 40
Symbolic and Oral Communication		9-19
ENGL 1113	Principles of English Composition	3
ENGL 1213 or EXPO 1213 or LSTD	Principles of English Composition Expository Writing Any LSTD course	3
MATH 1473 or LSTD 1053	Mathematics for Critical Thinking Mathematics in Liberal Studies	3
	Foreign Language (if not exempt)	0-10
Social Science		6
P SC 1113 or LSTD 1323	American Federal Government Governing Ourselves	3
	Elective	3
Humanities		12
HIST 1483 or HIST 1493	U.S. History 1492-1865 U.S. History 1865-Present	3
LSTD 1223	A History of the US	3
	Non-Western Culture	3
	Understanding Artistic Forms	3
Science		7
	Two natural science courses from different disciplines; one must include a laboratory component	7
Senior Capstone Experience		3
LSTD 4953	Study in Depth (Capstone)	3
Major Requirements		45
LSTD 3503	Interdisciplinary Inquiry	3
*LSLC 3953	Lifespan Capstone Prospectus	3
*LSLC 4953	Lifespan Study in Depth and Practicum	3
*LSLC 3113	Lifespan Development	3
*LSLC 4063	Issues in Lifespan Research	3
*LSLC 3113	Lifespan Health	3
*LSLC 3153	Ethical and Legal Issues in Health Care	3
*LSLC 3173	Human Service Administration I	3

*LSLC 4193	Human Service Budgeting and Finance	3
*LSLC 3203	Care of Infant and Child	3
*LSLC 3313	Issues in Adolescence I	3
*LSLC 3403	Issues in Geriatrics I	3
*LSLC 4173	Human Service Administration II	3
Students will select 9 credit hours from one of the following		
Childhood		
*LSLC 4203	Parenting: Different Models	3
*LSLC 3233	Problems of the American Family	3
*LSLC 3273	Management of Infant and Child Care Facilities	3
Adolescence		
*LSLC 4313	Issues in Adolescence II	3
*LSLC 3333	Career and Life Development for Adolescents	3
*LSLC 3373	Management for Adolescent Residential Care Facilities	3
Adolescence		
*LSLC 3243	Biology of Human Aging	3
*LSLC 4403	Issues in Geriatrics II	3
*LSLC 3473	Management of Geriatric Care Facilities	3
General Electives		35
Students will take elective courses to bring total number of credit hours to 120		
Total		120

*Asterisks denote new courses

ATTACHMENT C

**UNIVERSITY OF OKLAHOMA
GRADUATE CERTIFICATE IN WOMEN'S AND GENDER STUDIES**

Degree Requirements	Credit Hours
Required Core Courses	4
WGS 5001 Women's and Gender Studies Colloquium	1
WGS 5123 Contemporary Feminist Thought	3
Specialty Electives	9
Students must complete nine credit hours from courses approved for graduate study in the Women's and Gender Studies program or other courses as approved by the graduate committee to make a coherent program of study.	
Total	13

ATTACHMENT D

**UNIVERSITY OF OKLAHOMA
GRADUATE CERTIFICATE IN BUSINESS ENTREPRENEURSHIP**

Degree Requirements	Credit Hours
Core	4
ENT 5934 Strategic Venture Development	4
Guided Electives	6
Students must complete 6 credit hours from the following	
ENT 5902 The Entrepreneurial Process	2
ENT 5912 Capitalizing the New Venture	2
ENT 5922 Intellectual Property	2
ENT 5942 Launching the New Venture	2
ENT 5952 Entrepreneurial Opportunity Recognition	2
Any other ENT elective as available	
General Electives	2
Students must complete 2 credit hours offered through the Michael F. Price College of Business	
Total	12

Meeting of the
OKLAHOMA STATE REGENTS FOR HIGHER EDUCATION
June 27, 2013

AGENDA ITEM #14-b:

New Programs.

SUBJECT: Oklahoma State University. Approval of request to offer the Master of Science in Materials Science and Engineering in Tulsa.

RECOMMENDATION:

It is recommended that the State Regents approve Oklahoma State University's request to offer the Master of Science in Materials Science and Engineering in Tulsa, with the stipulation that continuation of the program will depend upon meeting the criteria established by the institution and approved by the State Regents, as described below.

- **Master of Science in Materials Science and Engineering.** Continuation beyond Fall 2017 will depend upon:
 - Majors enrolled: a minimum of 7 students in Fall 2016; and
 - Graduates: a minimum of 3 students in 2016-2017.

BACKGROUND:

Academic Plan

Oklahoma State University's (OSU) Academic Plan lists the following institutional priorities and new funding initiatives:

- Online courses are being considered in several departments in order to provide greater enrollment flexibility.
- A degree option, the Masters in International Agriculture, which has attracted significant numbers of students, will be adjusted to a separate degree with no additional resource investment.
- Online instruction culminating in both degrees and certificates, particularly in graduate programs, will continue to be emphasized.
- An online Master of Agriculture in Agricultural Sciences and Natural Resources will be developed to serve new audiences who are primarily practicing professionals desiring to achieve career advancement and professional development. There are sufficient online courses offered by various departments in DASNR and other OSU colleges for students to be able to complete this proposed degree. Further academic efficiencies and initiatives will be identified and implemented with new administrative leadership in the college.
- An increase in the number of interdisciplinary graduate certificates to meet an unaddressed need for short-term, specialized graduate training is under consideration. The Graduate College is specifically well positioned to offer such programs.

APRA Implementation

In August 1991, the State Regents launched the Academic Planning/Resource Allocation (APRA) initiative, which was based on the principle that institutional officials would prioritize their programs and activities, and then fund higher priority activities at levels that ensured quality. In times of flat or declining budgets or financial constraints, institutions are expected to reallocate resources from lower priority activities to higher priority activities, rather than reducing quality by funding lower priority activities at the same rate as higher priority activities.

Since 1992, OSU has taken the following program actions in response to APRA:

84	Degree and/or certificate programs deleted
75	Degree and/or certificate programs added

Program Review

OSU offers 222 degree and/or certificate programs as follows:

20	Certificates
0	Associate in Arts or Sciences Degrees
0	Associate in Applied Science Degrees
90	Baccalaureate Degrees
68	Master's Degrees
44	Doctoral Degrees
0	First Professional Degrees

All of these programs were reviewed in the past five years with the exception of those programs with specialty accreditation. Programs with specialty accreditation are aligned with OSU's program review schedule as appropriate. Thus, if a professional program received a ten-year accreditation, it would not be reviewed for ten years, which is an approved exception to State Regents' policy.

Program Development Process

OSU's faculty developed the proposal, which was reviewed and approved by institutional officials. OSU's governing board approved delivery of the Master of Science in Materials Science and Engineering at the March 4, 2013 meeting. OSU requests authorization to offer the Master of Science in Materials Science and Engineering as outlined below.

POLICY ISSUES:

This action is consistent with the Academic Program Approval policy.

ANALYSIS:

Master of Science in Materials Science and Engineering

Program purpose. The purpose of the proposed graduate program is to provide opportunities for training in research and technology development in advanced materials to act as a catalyst for the long-term economic viability of the region.

Program rationale and background. The field of Materials Science and Engineering (MS&E) is expanding with unprecedented intellectual challenges and opportunities and is crucial for U.S. industries and the strength of the economy. With the world becoming more interconnected, the U.S. has to invest in areas where opportunities still exist for industrial growth. While there are researchers working in MS&E

at national laboratories, absence of MS&E programs pose a severe threat to the future workforce once these people retire. The proposed graduate program will train the next generation to design materials for specialized uses, making materials reliable and useful to mankind. Establishment of an MS&E program opens new opportunities for OSU as no such program exists in Oklahoma.

Employment opportunities. Rapid advances are taking place in the development of new materials. With many industries moving their manufacturing facilities overseas, as well as some research and development operations, the need to train a well-qualified workforce in the U.S. in advanced areas of research and technology has grown. For example, advanced materials are important to the aviation and space industries in Oklahoma, based on the Governor’s Report, with economic impacts of \$11.7 billion in industrial output, \$4.7 billion in payroll, \$77 million in state income revenue, \$60.6 million in state sales tax revenue, and 143,700 jobs. Graduates of this program can find employment with companies such as WEBCO and NORDAM in Tulsa and with research organizations such as INTEL, IBM, GE, and UTC. OSU reports that they have already received frequent request from these industries for qualified MS&E graduates with advanced degrees. OSU is confident that graduates of this program will find employment utilizing this credential.

Student demand. The new degree program is expected to meet the enrollment and graduate standards by the established deadline prior to final approval by the State Regents as shown in the following table.

Productivity Category	Criteria	Deadline
Minimum Enrollment of majors in the program	7	Fall 2016
Minimum Graduates from the program	3	2016-2017

Duplication and impact on existing programs. Consistent with the recently developed OSRHE plan for review of academic programs delivered in the immediate Tulsa area by Oklahoma public universities and colleges, this certificate program has been reviewed to ensure no unjustifiable program duplication and to ensure that the needs of all Tulsa area students are met. This review is consistent with the Academic Program Approval policy and involves consideration of student and employer demand for the program, demand for services or intellectual property of the program, and alternative forms of delivery and consortial or joint programs. Where other similar programs may serve the same potential student population, evidence must demonstrate that the proposed program (whether or not it is a new academic program or an extension of an existing program) is sufficiently different from the existing program(s) offered by other institutions or that access to the existing program(s) is sufficiently limited to warrant initiation of a new program offering.

There are no Master of Science in Materials Science and Engineering programs offered in Oklahoma. A system wide letter of intent was communicated by email on April 22, 2013. None of the State System institutions notified State Regents’ staff of a protest to the proposed certificate program. Due to demand demonstrated by OSU, no other duplicate programs, and OSU’s statewide mission, approval of this program to be offered by OSU in Tulsa will not constitute unnecessary duplication. This academic program and all other postsecondary programs in the state system currently delivered in the immediate Tulsa area will be inventoried and tracked for performance as a part of the annual Tulsa Accountability Report designed to monitor academic program delivery and productivity statistics for institutions in the Tulsa area.

Curriculum. The proposed degree program will consist of 30-35 total credit hours as shown in the following table. Five new courses will be added (Attachment A).

Content Area	Credit Hours
Core Courses	15 (thesis) - 21 (creative component)
Electives	9 (thesis) -12 (creative component)
Thesis or Creative Component	6 (thesis) - 2 (creative component)
Total	30 (thesis)-35 (creative component)

Faculty and staff. Existing faculty will teach the proposed degree program.

Support services. The library, facilities and equipment are adequate.

Financing. The proposed degree program will be offered on a self-supporting basis and the current tuition and fee structure will be sufficient to adequately fund the program. No additional funding is requested from the State Regents to support the program.

Program resource requirements. Program resource requirements for the Master of Science in Materials Science and Engineering are shown in the following tables.

A. Funding Sources	Year of Program				
	1 st Year	2 nd Year	3 rd Year	4 th Year	5 th Year
Total Resources Available from Federal Sources	\$0	\$0	\$0	\$0	\$0
Total Resources Available from Other Non-State Sources	\$200,000	\$200,000	\$200,000	\$200,000	\$200,000
Narrative/Explanation: Sum of all MS&E faculty chair funds					
Existing State Resources	\$806,370	\$830,129	\$854,600	\$969,805	\$998,467
Narrative/Explanation: Current allocations for OSU					
State Resources Available through Internal Allocation and Reallocation	\$301,200	\$301,200	\$301,200	\$412,200	\$412,200
Narrative/Explanation: Current funds from grants and awards					
Student Tuition	\$16,020	\$21,360	\$32,040	\$37,380	\$37,380
Narrative/Explanation and Calculations:					
TOTAL	\$1,323,590	\$1,352,689	\$1,387,840	\$1,619,385	1,648,047

B. Breakdown of Budget Expenses/Requirements	Year of Program				
	1 st Year	2 nd Year	3 rd Year	4 th Year	5 th Year
Administrative/Other Professional Staff	\$195,000	\$200,850	\$206,876	\$213,082	\$219,474
Narrative/Explanation: Cost for administrative support, core laboratory manager, and laboratory					
Faculty	\$596,950	\$614,859	\$633,304	\$742,303	\$764,572
Narrative/Explanation: Costs for four faculty members					

Graduate Assistants	\$403,200	\$403,200	\$403,200	\$504,000	\$504,000
Narrative/Explanation: Costs for MS&E graduate research assistants.					
Student Employees	\$4,420	\$4,420	\$4,420	\$4,420	\$4,420
Narrative/Explanation: Costs for student office worker.					
Equipment and Instructional Materials	\$50,000	\$50,000	\$50,000	\$50,000	\$50,000
Narrative/Explanation: Costs for supplies and equipment used for laboratories and instruction, computer hardware and software and inventory equipment.					
Library	\$0	\$0	\$0	\$0	\$0
Contractual Services	\$6,000	\$6,000	\$6,000	\$6,000	\$6,000
Narrative/Explanation: Cost for building and/or equipment repairs, as well as maintenance contracts.					
Other Support Services	\$0	\$0	\$0	\$0	\$0
Commodities	\$0	\$0	\$0	\$0	\$0
Printing	\$1,000	\$1,000	\$1,000	\$1,000	\$1,000
Narrative/Explanation: Reflects the amount budgeted for printing, binding, and duplicating services.					
Telecommunications	\$1,000	\$1,000	\$1,000	\$1,200	\$1,200
Narrative/Explanation: Costs for telephone services					
Travel	\$50,000	\$50,000	\$50,000	\$60,000	\$60,000
Narrative/Explanation: Reflects amounts budgeted for per diem, lodging, mileage, and transportation to conferences and paper presentations by MS&E faculty and students					
Awards and Grants	\$0	\$0	\$0	\$0	\$0
TOTAL	\$1,307,570	\$1,331,329	\$1,355,800	\$1,522,005	\$1,100,666

Attachment

**OKLAHOMA STATE UNIVERSITY
MASTER OF SCIENCE IN MATERIALS SCIENCE AND ENGINEERING**

Degree Requirements	Credit Hours
Core	15
*MSE 5013 Advanced Thermodynamics of Materials	3
*MSE 5023 Diffusion and Kinetics	3
*MSE 5033 Composite Materials	3
*MSE 5043 Advanced Materials Characterization	3
MAE 5693 Phase Transformations in Materials	3
Required Courses for Students with Creative Component	6
MAE 5113 Diffraction in Materials	3
MAE 5133 Mechanical Behavior of Materials	3
Electives	9-12
*MSE 5053 Smart Materials	3
ENGR 5010 Composite Manufacturing: Materials, Methods and Applications	3
MAE 5503 Mechanics of Advanced Composites for Structural Design	3
MAE 5543 Modern Materials	3
CHE 5413 Fundamentals of Polymer Engineering	3
ECEN 5843 Microelectronic Fabrication	3
ECEN 6843 Advanced Microelectronic Fabrication	3
MAE 5003 Advanced Biomaterials Science and Engineering	3
Students may also select approved courses from the following departments at OSU: Chemistry, Physics, Biological/Health Science, Chemical Engineering, Electrical and Computer Engineering, and Mechanical and Aerospace Engineering.	
Thesis or Creative Component	2-6
Thesis students will complete 6 credit hours Creative Component students will complete 2 credit hours	
Total	30-35

*Asterisks denotes new courses

Meeting of the
OKLAHOMA STATE REGENTS FOR HIGHER EDUCATION
June 27, 2013

AGENDA ITEM #14-c:

New Programs.

SUBJECT: Northeastern State University. Approval of request to offer the Bachelor of Arts in Spanish (082) and the Bachelor of Arts in Education in Spanish Education (083) in Broken Arrow.

RECOMMENDATION:

It is recommended that the State Regents approve Northeastern State University's (NSU) request to offer the existing Bachelor of Arts in Spanish (082) and the existing Bachelor of Arts in Education in Spanish Education (083) degrees on the Broken Arrow campus in traditional and electronic media format with the stipulation that continuation of the programs will depend upon meeting the criteria established by the institution and approved by the State Regents, as described below.

- **Bachelor of Arts in Spanish (082).** Continuation beyond Fall 2018 will depend upon meeting the following criteria:
Majors enrolled: a minimum of 12 students in Fall 2017; and
Graduates: a minimum of 5 students in 2017-2018
- **Bachelor of Arts in Education in Spanish Education (083).** Continuation beyond Fall 2018 will depend upon meeting the following criteria:
Majors enrolled: a minimum of 12 students in Fall 2017; and
Graduates: a minimum of 5 students in 2017-2018

BACKGROUND:

Academic Plan

NSU's Academic Plan lists the following institutional priorities and new funding initiatives:

- The following are academic programs that may be considered in the future: Engineering Technology, Recreation and Bachelor of Science in Business at the undergraduate level, more health related programs at the undergraduate and master's level including a Physician Assistant program; information technology at the master's level, and credit/noncredit certificate programs in specialized areas such as Certified Financial Planner, Entrepreneurship, Hospitality, Casino Gaming, Supply Chain Management, Environmental Health and Safety Management, and Insurance Management.
- All existing programs see opportunity to expand into surround counties, and particularly the Tulsa metro area where a significant number of individuals have some college hours – the primary audience for these degree completion programs.

- Institutional focus on excellence in teaching and advising. Create a professional advising center through the Title III grants.
- Increased budget for programs, faculty and support staff through a cost recovery model of course delivery being utilized in the College of Extended Learning on the Broken Arrow campus.
- Increase the residential population to include 10 percent international students and provide funding for increased recruiting and support services and international faculty development.
- Funding to support development efforts at the college level (development director/officer for each college). Currently only one college has a fulltime development officer. One development officer will be added each year until all colleges are covered.
- Increased funding for faculty salaries to attract the best and brightest individuals with diverse backgrounds to NSU.
- Continued build out of the health related professions in the College of Science and Health Professions under the aegis of the American Indian School of Health Professions with differential tuition rates for these programs. Occupational Therapy courses will begin FY2013-2014. Additional academic programs planned for the future include Physician Assistant Program and other allied health programs as well as the build-out of STEM programs on the Broken Arrow campus.
- Continued growth of programs in the College of Extended Learning to include:
 - General education courses to serve working adults via online/blended format;
 - Certificate programs both credit and non-credit;
 - Undergraduate programs such as Supply Chain Management; Technology; and others moved to CEL;
 - More graduate programs offered through blended/online delivery.

APRA Implementation

In August 1991, the State Regents launched the Academic Planning/Resource Allocation (APRA) initiative, which was based on the principle that institutional officials would prioritize their programs and activities, and then fund higher priority activities at levels that ensured quality. In times of flat or declining budgets or financial constraints, institutions are expected to reallocate resources from lower priority activities to higher priority activities, rather than reducing quality by funding lower priority activities at the same rate as higher priority activities.

Since 1992, NSU has taken the following program actions in response to APRA:

40	Degree and/or certificate programs deleted
28	Degree and/or certificate programs added

Program Review

NSU offers 85 degree and/or certificate programs as follows:

7	Certificates
0	Associate in Arts or Sciences Degrees
0	Associate in Applied Science Degrees
54	Baccalaureate Degrees
23	Master's Degrees
0	Doctoral Degrees
1	First Professional Degree

All of these programs were reviewed in the past five years with the exception of those programs with specialty accreditation. Programs with specialty accreditation are aligned with NSU's program review schedule as appropriate. Thus, if a professional program received a ten-year accreditation, it would not be reviewed for ten years, which is an approved exception to State Regents' policy.

Program Development Process

NSU faculty developed the proposal, which was reviewed and approved by institutional officials. NSU's governing board approved delivery of the Bachelor of Arts in Spanish (082) and the Bachelor of Arts in Education in Spanish Education (083) on the Broken Arrow campus at the April 12, 2013 meeting. NSU requests authorization to offer the programs, as outlined below.

NSU is currently approved to offer the following degree programs via electronic media:

- Bachelor of Science in Nursing (104);
- Bachelor of Science in Human and Family Science-Early Care Option (045);
- Master of Education in Science Education (139); and
- Master of Education in Reading (075).

POLICY ISSUES:

This action is consistent with the State Regents' Academic Program Approval and the Electronically Delivered and Traditional Off-Campus Courses and Programs policies.

Policy allows institutions with approved electronic media delivered programs or grandfathered status to request programs through an abbreviated process. The process calls for the President to send the following information to the Chancellor: 1) letter of intent, 2) the name of the program, 3) delivery method(s), 4) information related to population served and student demand, and 5) cost and financing.

Bachelor of Arts in Spanish (082) Bachelor of Arts in Education in Spanish Education (083)

Program purpose. The purpose of these programs is to offer the existing Bachelor of Arts (BA) in Spanish (082) and the Bachelor of Arts in Education (BAE) in Spanish Education (083) degrees on the Broken Arrow campus to address an underserved area in regards to the advanced study of the Spanish language and Hispanic cultures.

Program rationale and background. The United States has become one of the largest Spanish-speaking countries in the world. According to the 2010 Census, the Hispanic population of the United States grew 43 percent, with much of that growth in the Southern and Midwestern Regions. According to the Pew Hispanic Center, Hispanics now comprise 9 percent of the population in Oklahoma. Tulsa County has seen a growth of 98 percent in the Hispanic population over the last decade. Given the presence of a fairly large Hispanic community in the Tulsa area, an expansion of the Spanish programs to the Broken Arrow campus would assist many students with their personal and professional goals.

Employment opportunities. The BA in Spanish (082) attracts students who want to combine skills and cultural knowledge with professional skills in areas such as social services, health care, criminal justice, or business. With the increase in the Spanish-speaking population in Oklahoma, individuals pursuing these careers who are bilingual will have an advantage over other candidates who are monolingual or are lacking cultural awareness. The BAE in Spanish Education (083) will address the shortage of teachers in Spanish in the Tulsa area. In April 2012, the Office of Postsecondary Education published a listing of teacher shortage areas, in which Oklahoma is listed as having had a shortage of Spanish or foreign

languages for the past 16 years. Additionally, The World Languages Director with the Oklahoma State Department of Education prepared a report in 2012 that emphasized the need to educate Oklahoma students for a globally competitive world. The director also reports that the State Superintendent has determined that Oklahoma school districts should be required to meet the world language instruction provisions of HB 1017. NSU is confident that graduates of this program will find employment using their degree.

Student demand. The proposed degree programs are expected to meet the enrollment and graduate standards by the established deadline prior to final approval by the State Regents as shown in the following table.

Bachelor of Arts in Spanish (082)

Productivity Category	Criteria	Deadline
Minimum Enrollment of majors in the program	12	Fall 2017
Minimum Graduates from the program	5	2017-2018

Bachelor of Arts in Education in Spanish Education (083)

Productivity Category	Criteria	Deadline
Minimum Enrollment of majors in the program	12	Fall 2017
Minimum Graduates from the program	5	2017-2018

Duplication and impact on existing programs. The proposed degree programs are an extension of the existing Bachelor of Arts in Spanish (082) and Bachelor of Arts in Education in Spanish Education (083) offered at NSU’s Tahlequah campus. While there are no similar programs in the Tulsa area, the existing degree programs duplicate the following programs:

Institution	Existing Program
University of Oklahoma	Bachelor of Arts in Spanish (215)
Oklahoma State University	Bachelor of Arts in Spanish (188)
Northwestern Oklahoma State University	Bachelor of Arts in Spanish (123)
Southeastern Oklahoma State University	Bachelor of Arts in Spanish Education (097)
Southeastern Oklahoma State University	Bachelor of Arts in Spanish (149)
Southwestern Oklahoma State University	Bachelor of Arts in Spanish (125)
University of Central Oklahoma	Bachelor of Arts in Modern Languages (124) with an option in Spanish
University of Central Oklahoma	Bachelor of Arts in Modern Language Education (125) with an option in Modern Language-Spanish

Consistent with the recently developed OSRHE plan for review of academic programs delivered in the immediate Tulsa area by Oklahoma public universities and colleges, these degree programs have been reviewed to ensure no unjustifiable program duplication and to ensure that the needs of all Tulsa area students are met. This review is consistent with the Academic Program Approval policy and involves

consideration of student demand for the programs, employer demand for the programs, demand for services or intellectual property of the programs, and alternative forms of delivery and consortial or joint programs. Where other similar programs may serve the same potential student population, evidence must demonstrate that the proposed programs (whether or not they are new academic programs or an extension of existing programs) is sufficiently different from the existing program(s) offered by other institutions or that access to the existing program(s) is sufficiently limited to warrant initiation of new program offerings.

A system wide letter of intent was communicated by email on February 22, 2013. None of the State System institutions notified State Regents' staff of a protest to the proposed programs. Due to demand demonstrated by NSU, approval of these programs to be offered at the Broken Arrow campus will not constitute unnecessary duplication. These academic programs and all other postsecondary programs in the state system currently delivered in the immediate Tulsa area will be inventoried and tracked for performance as part of the annual Tulsa Accountability Report designed to monitor academic program delivery and productivity statistics for institutions in the Tulsa area.

Curriculum. The proposed degree programs will consist of 124 total credit hours as shown in the following tables. These curricula mirror the requirements of the existing program offerings on the NSU main campus in Tahlequah. No new courses will be added and the curricula is detailed in the attachments (Attachment A and B).

Bachelor of Arts in Spanish (082)

Content Area	Credit Hours
General Education Courses	49-51
Major Courses	40
Free Electives	33-35
Total	124

Bachelor of Arts in Education in Spanish Education (083)

Content Area	Credit Hours
General Education Courses	49-51
Major Courses	40
Professional Education	29
Free Electives	4-6
Total	124

Faculty and staff. Existing faculty will teach the proposed programs.

Delivery method and support services. The programs will be offered in an online format using a variety of software suites and individual course websites. NSU will meet academic standards outlined in policy required to ensure the quality of the degree programs. Academic standards include faculty training, student services, and other support services including library, facilities and computing equipment containing a variety of software suites necessary to support the programs.

Financing. Since NSU currently offers courses in Spanish, the proposed programs will use existing resources and tuition revenue. No additional funding is requested from the State Regents.

Program resource requirements. Program resource requirements for the Bachelor of Arts in Spanish (082) and the Bachelor of Arts in Education in Spanish Education (083) are shown in the following tables.

A. Funding Sources	Year of Program				
	1st Year	2nd Year	3rd Year	4th Year	5th Year
Total Resources Available from Federal Sources	\$0	\$0	\$0	\$0	\$0
Total Resources Available from Other Non-State Sources	\$0	\$0	\$0	\$0	\$0
Existing State Resources	\$29,970	\$59,940	\$79,920	\$99,990	\$119,880
Narrative/Explanation: These amounts reflect current funds budgeted for faculty salaries.					
State Resources Available through Internal Allocation and Reallocation	\$0	\$0	\$0	\$0	\$0
Student Tuition	\$16,071	\$30,542	\$42,856	\$53,570	\$64,800
Narrative/Explanation: Tuition was calculated based on \$180.00 per credit hour with 6, 12, 16, 20, and 24 students completing 15 credit hours per semester for years 1 through 5.					
TOTAL	\$46,041	\$90,482	\$122,776	\$153,560	\$184,680

B. Breakdown of Budget Expenses/Requirements	Year of Program				
	1st Year	2nd Year	3rd Year	4th Year	5th Year
Administrative/Other Professional Staff	\$0	\$0	\$0	\$0	\$0
Faculty	\$29,970	\$59,940	\$79,920	\$99,900	\$119,880
Narrative/Explanation: These amounts reflect the portion of faculty salaries that will be used to teach the students on the Broken Arrow campus.					
Graduate Assistants	\$0	\$0	\$0	\$0	\$0
Student Employees	\$0	\$0	\$0	\$0	\$0
Equipment and Instructional Materials	\$0	\$0	\$0	\$0	\$0
Library	\$0	\$0	\$0	\$0	\$0
Contractual Services	\$0	\$0	\$0	\$0	\$0
Other Support Services	\$0	\$0	\$0	\$0	\$0
Commodities	\$0	\$0	\$0	\$0	\$0
Printing	\$0	\$0	\$0	\$0	\$0
Telecommunications	\$0	\$0	\$0	\$0	\$0
Travel	\$544	\$544	\$544	\$544	\$544
Narrative/Explanation: Amount reflects budget for motor pool vehicle to travel from Tahlequah to Broken Arrow.					
Awards and Grants	\$0	\$0	\$0	\$0	\$0
TOTAL	\$30,514	\$60,484	\$80,464	\$100,444	\$120,424

Attachments

ATTACHMENT A

**NORTHEASTERN STATE UNIVERSITY (BROKEN ARROW*)
BACHELOR OF ARTS IN SPANISH**

Degree Requirements	Credit Hours
General Education	49-51
ENGL 1113 Freshman Composition I	3
ENGL 1213 Freshman Composition II	3
COMM 1113 or Fundamentals of Oral Communication COMM 2213 or Public Speaking COMM 3233 or Business and Professional Communication COMM 3303 Group Dynamics	3
POLS 1113 American Federal Government	3
HIST 1483 or American History 1492-1876 HIST 1493 American History since 1876	3
GEOG 2243 or Fundamentals of Geography SOC 1113 or Introduction to Sociology PSYC 1113 or Introduction to Psychology ECON 2213 or Principles of Microeconomics ECON 2313 Principles of Macroeconomics	3
Global Perspectives: Students must select one approved course from two of the following areas: Second Language, American Indian Studies, Geography, Political Science, or Literature, Customs, and Society	6
HED 1113 or Personal Health HFS 1653 Basic Nutrition	3
3 credit hours from the following	3
FIN 2113 or Personal Financial Planning HFS 1103 or Relationships and Marriage HFS 3113 or Consumer Issues PSYC 1003 or Introduction to Human Behavior CIS 1003/IS Computers in Modern Society 1003 or (or a more advanced CS/IS course) EDUC 4823 or Technology in Education HED 2212 or First Aid/Responding to Emergencies PED 4741 or Seminar: CPR Training LIBM 4611 Electronic Information Retrieval	3
ENGL 2113 or Introduction to Literature HIST 1113 or Early Western Civilization HUM 2113 or General Humanities I HUM 2223 or General Humanities II PHIL 1013 Introduction to Philosophy	3
HUM 2333 or Art Appreciation MUS 2543 or Music Appreciation MUS 2863 or World Music THTR 2763 or Theatre Appreciation THTR 2843 Film Appreciation	3

BIOL 1114 or BIOL 1113 and BIOL 1111 or BIOL 1123 and BIOL 1131 or BIOL 3413	General Biological Science General Biological Science (Lecture) General Biological Science (Lab) Evolution and Diversity Investigative Laboratory Environmental Problems	3-4
SCI 1114	General Physical Science A course in CHEM with a lab A course in PHYS (includes a lab)	3-5
MATH 1473 or MATH 1513	Applied Mathematics College Algebra An advanced course in Mathematics, Statistics, or Computer Programming	3
UNIV 1002	University Strategies	2
UNIV 2091	General Education Capstone	1
Major Courses		40
SPAN 2113	Intermediate Spanish I	3
SPAN 2123	Intermediate Spanish II	3
SPAN 3113	Advanced Composition and Conversation I	3
SPAN 3123	Advanced Composition and Conversation II	3
SPAN 3503	Introduction to Hispanic Literature	3
SPAN 4123	Advanced Spanish Grammar	3
SPAN 4573	Survey of Spanish Linguistics	3
SPAN 4043	Methods of Teaching World Languages	3
SPAN 4951	Senior Seminar	3
6 credit hours from the following:		
SPAN 3223	Latino Cultures of the US	3
SPAN 4213	Culture and Civilization of Spain	3
SPAN 4223	Culture and Civilization of Spanish America	3
3 credit hours from the following:		
SPAN 4503	Survey of Spanish Literature	3
SPAN 4553	Survey of Spanish-American Literature	3
6 credit hours from the following:		
SPAN 2010	Seminar	1-6
SPAN 2990	Special Topics	1-6
SPAN 2313	Intermediate Spanish Conversation	3
SPAN 3223	Latino Cultures of the US	3
SPAN 4213	Culture and Civilization of Spain	3
SPAN 4223	Culture and Civilization of Spanish America	3

SPAN 4410	Seminar	1-6
SPAN 4330	Special Topics	1-6
SPAN 4503	Survey of Spanish Literature	3
SPAN 4553	Survey of Spanish –American Literature	3
Free Electives		33-35
Students may select courses so that the total number of credit hours completed toward the degree totals 124.		
Total		124

*The degree requirements for the Broken Arrow offering will be consistent with the degree requirements for the offering on the Tahlequah campus.

ATTACHMENT B

**NORTHEASTERN STATE UNIVERSITY (BROKEN ARROW*)
BACHELOR OF ARTS IN EDUCATION IN SPANISH EDUCATION**

Degree Requirements		Credit Hours
General Education		49-51
ENGL 1113	Freshman Composition I	3
ENGL 1213	Freshman Composition II	3
COMM 1113 or COMM 2213 or COMM 3233 or COMM 3303	Fundamentals of Oral Communication Public Speaking Business and Professional Communication Group Dynamics	3
POLS 1113	American Federal Government	3
HIST 1483 or HIST 1493	American History 1492-1876 American History since 1876	3
GEOG 2243 or SOC 1113 or PSYC 1113 or ECON 2213 or ECON 2313	Fundamentals of Geography Introduction to Sociology Introduction to Psychology Principles of Microeconomics Principles of Macroeconomics	3
	Global Perspectives: Students must select one approved course from two of the following areas: Second Language, American Indian Studies, Geography, Political Science, or Literature, Customs, and Society	6
HED 1113 or HFS 1653	Personal Health Basic Nutrition	3
	3 credit hours from the following	3
FIN 2113 or HFS 1103 or HFS 3113 or PSYC 1003 or CIS 1003/IS 1003 or EDUC 4823 or HED 2212 or PED 4741 or LIBM 4611	Personal Financial Planning Relationships and Marriage Consumer Issues Introduction to Human Behavior Computers in Modern Society (or a more advanced CS/IS course) Technology in Education First Aid/Responding to Emergencies Seminar: CPR Training Electronic Information Retrieval	
ENGL 2113 or HIST 1113 or HUM 2113 or HUM 2223 or PHIL 1013	Introduction to Literature Early Western Civilization General Humanities I General Humanities II Introduction to Philosophy	3
HUM 2333 or MUS 2543 or MUS 2863 or THTR 2763 or THTR 2843	Art Appreciation Music Appreciation World Music Theatre Appreciation Film Appreciation	3

BIOL 1114 or BIOL 1113 and BIOL 1111 or BIOL 1123 and BIOL 1131 or BIOL 3413	General Biological Science General Biological Science (Lecture) General Biological Science (Lab) Evolution and Diversity Investigative Laboratory Environmental Problems	3-4
SCI 1114	General Physical Science A course in CHEM with a lab A course in PHYS (includes a lab)	3-5
MATH 1473 or MATH 1513	Applied Mathematics College Algebra An advanced course in Mathematics, Statistics, or Computer Programming	3
UNIV 1002	University Strategies	2
UNIV 2091	General Education Capstone	1
Major Courses		40
SPAN 2113	Intermediate Spanish I	3
SPAN 2123	Intermediate Spanish II	3
SPAN 3113	Advanced Composition and Conversation I	3
SPAN 3123	Advanced Composition and Conversation II	3
SPAN 3503	Introduction to Hispanic Literature	3
SPAN 4123	Advanced Spanish Grammar	3
SPAN 4573	Survey of Spanish Linguistics	3
SPAN 4043	Methods of Teaching World Languages	3
SPAN 4951	Senior Seminar	3
6 credit hours from the following:		
SPAN 3223	Latino Cultures of the US	3
SPAN 4213	Culture and Civilization of Spain	3
SPAN 4223	Culture and Civilization of Spanish America	3
3 credit hours from the following:		
SPAN 4503	Survey of Spanish Literature	3
SPAN 4553	Survey of Spanish-American Literature	3
6 credit hours from the following:		
SPAN 2010	Seminar	1-6
SPAN 2990	Special Topics	1-6
SPAN 2313	Intermediate Spanish Conversation	3
SPAN 3223	Latino Cultures of the US	3
SPAN 4213	Culture and Civilization of Spain	3
SPAN 4223	Culture and Civilization of Spanish America	3

SPAN 4410	Seminar	1-6
SPAN 4330	Special Topics	1-6
SPAN 4503	Survey of Spanish Literature	3
SPAN 4553	Survey of Spanish –American Literature	3
Professional Education Requirements		29
EDUC 3113	Educational Psychology	3
EDUC 3313	Clinical Teaching/Pre-Internship	3
EDUC 4823	Technology in Education	3
SPED 4433	Introduction to Education of Children with Exceptionalities	3
EDUC 4353	Secondary Teaching Methods and Practices	3
EDUC 4032	Pre-Internship	2
EDUC 4054	Elementary Intern Teaching	4
EDUC 4074	Secondary Intern Teaching	4
EDUC 4172	Assessment and Evaluation	2
EDUC 4252	Seminar	2
Free Electives		4-6
Students may select courses so that the total number of credit hours completed toward the degree totals 124.		
Total		124

*The degree requirements for the Broken Arrow offering will be consistent with the degree requirements for the offering on the Tahlequah campus.

Meeting of the
OKLAHOMA STATE REGENTS FOR HIGHER EDUCATION
June 27, 2013

AGENDA ITEM #14-d:

New Programs.

SUBJECT: Southeastern Oklahoma State University. Approval to offer the Bachelor of Science in Early Intervention and Child Development.

RECOMMENDATION:

It is recommended that the State Regents approve Southeastern Oklahoma State University's request to offer the Bachelor of Science in Early Intervention and Child Development with the stipulation that continuation of the programs will depend upon meeting the criteria established by the institution and approved by the State Regents, as described below.

- **Bachelor of Science in Early Intervention and Child Development.** Continuation beyond Fall 2017 will depend upon:
Majors enrolled: a minimum of 15 students in Fall 2016; and
Graduates: a minimum of 15 students in 2016-2017.

BACKGROUND:

Academic Plan

Southeastern Oklahoma State University's (SEOSU) Academic Plan lists the following institutional priorities and new funding initiatives:

- Specialized accreditation
- New program development
- Sustain current and develop new outreach initiatives
- Review of the Academic Policies and Procedures Manual
- Continue and expand use of technology to sustain and grow course and program offerings

APRA Implementation

In August 1991, the State Regents launched the Academic Planning/Resource Allocation (APRA) initiative, which was based on the principle that institutional officials would prioritize their programs and activities, and then fund higher priority activities at levels that ensured quality. In times of flat or declining budgets or financial constraints, institutions are expected to reallocate resources from lower priority activities to higher priority activities, rather than reducing quality by funding lower priority activities at the same rate as higher priority activities.

Since 1992, SEOSU has taken the following program actions in response to APRA:

29	Degree and/or certificate programs deleted
20	Degree and/or certificate programs added

Program Review

SEOSU offers 52 degree and/or certificate programs as follows:

0	Certificates
0	Associate of Arts or Sciences Degrees
0	Associate of Applied Science Degrees
40	Baccalaureate Degrees
12	Master’s Degrees
0	Doctoral Degrees
0	First Professional Degrees

All of these programs were reviewed in the past five years with the exception of those programs with specialty accreditation. Programs with specialty accreditation are aligned with SEOSU’s program review schedule as appropriate. Thus, if a professional program received a ten-year accreditation, it would not be reviewed for ten years, which is an approved exception to State Regents’ policy.

Program Development Process

SEOSU’s faculty developed the proposal, which was reviewed and approved by institutional officials. SEOSU’s governing board approved delivery of the Bachelor of Science in Early Intervention and Child Development at the February 4, 2013 meeting. SEOSU requests authorization to offer this degree, as outlined below.

POLICY ISSUES:

This action is consistent with the Academic Program Approval policy.

ANALYSIS:

Bachelor of Science in Early Intervention and Child Development

Program purpose. The purpose of the proposed program is to address state and regionally identified needs for highly qualified personnel in early intervention and child development. Graduates of the proposed program will have the knowledge and skills to provide effective, research-based intervention and care to infants, toddlers, and young children.

Program rationale and background. In order to comply with the Statutory Degree and Credentialing requirement for Head Start teaching staff, at least 50 percent of Head Start teachers must have a bachelor’s or advanced degree in Early Childhood by September 30, 2013. In southeastern Oklahoma, there are 11 Indian Nation Community Action Head Starts in Atoka, Johnson, Marshall, and Murray counties and 24 Big Five Head Starts in Bryan, Carter, Coal, Love, and Pontotoc counties. Additionally, the Chickasaw Nation sponsors four Head Start programs, including facilities in Ardmore, Ada, Sulphur, and Tishomingo. SEOSU conducted a needs assessment and found approximately 150 graduates of Murray State College’s Associate in Arts in Child Development (061) program and 77 students currently enrolled, all of whom would benefit from this program.

Employment opportunities. According to the Oklahoma Employment Security Commission, careers as preschool and childcare center/program administrators are expected to increase 27 percent from 2010 to 2020. During the same time period, jobs for preschool teachers are expected to increase 13 percent. Additionally, with the new credential requirements for 50 percent of Head Start’s teaching staff to hold a bachelor’s or advanced degree, many students interested in pursuing the proposed degree program will already be employed. The Chickasaw and Choctaw Nations have indicated to SEOSU they are supportive of the proposed degree program and will provide both tuition reimbursements and employment in their child care facilities. Furthermore, the regional Head Start program directors have expressed a strong desire to exceed the statutory requirement by having 100 percent of their teachers holding bachelor’s degrees. SEOSU is confident that students graduating with the proposed degree will find employment within the field.

Student demand. The proposed degree program is expected to meet the enrollment and graduate standards by the established deadline prior to final approval by the State Regents as shown in the following table.

Productivity Category	Criteria	Deadline
Minimum Enrollment of majors in the program	15	Fall 2016
Minimum Graduates from the program	15	2016-2017

Duplication and impact on existing programs. Although there are no Bachelor of Science in Early Intervention and Child Development programs offered in Oklahoma, the proposed program shares some content with the following existing programs:

Institution	Existing Program
University of Oklahoma	Bachelor of Science in Education in Early Child Education (046)
Oklahoma State University	Bachelor of Science in Human Development/Family Science (094) with an option in Early Childhood Education
University of Central Oklahoma	Bachelor of Science in Education in Early Child Education (094)
Cameron University	Bachelor of Science in Early Childhood Education (355)
Northeastern State University	Bachelor of Science in Education in Early Childhood Education (023)
Northwestern Oklahoma State University	Bachelor of Science in Education in Early Childhood Education (057)
Langston University	Bachelor of Science in Family and Consumer Sciences (010) with an option in Early Childhood Education
University of Science and Arts of Oklahoma	Bachelor of Science in Early Childhood Education (032)
East Central University	Bachelor of Science in Early Childhood (054)
Southwestern Oklahoma State University	Bachelor of Science in Education in Elementary Education (017) with an option in Early Childhood Education

A system wide letter of intent was communicated via email on March 11, 2013. The University of Central Oklahoma (UCO) requested a copy of the proposal, which was sent via mail on April 23, 2013. Neither UCO nor any of the State System institution notified State Regents’ staff of a protest to the proposed program. Due to distance between institutions, statutory requirements, unique focus of the curriculum, and increasing workforce needs, approval will not constitute unnecessary duplication.

Curriculum. The proposed degree program will consist of 124 total credit hours each as shown in the following table. Seven new courses will be added and the curriculum is detailed in the attachment (Attachment A).

Content Area	Credit Hours
General Education	44
Core Courses	18
Early Child Care Courses	42
General Electives	20
Total	124

Faculty and staff. Existing faculty will teach the proposed degree program.

Support services. The library, facilities, and equipment are adequate for this degree program.

Financing. The proposed degree program will be offered on a self-supporting basis and the current tuition and fee structure will be sufficient to adequately fund the program. No additional funding is requested from the State Regents to support the degree program.

Program resource requirements. Program resource requirements for the Bachelor of Science in Early Intervention and Child Development are shown in the following tables.

A. Funding Sources	Year of Program				
	1 st Year	2 nd Year	3 rd Year	4 th Year	5 th Year
Total Resources Available from Federal Sources	\$0	\$0	\$0	\$0	\$0
Total Resources Available from Other Non-State Sources	\$0	\$0	\$0	\$0	\$0
Existing State Resources	\$0	\$0	\$0	\$0	\$0
State Resources Available through Internal Allocation and Reallocation	\$0	\$0	\$0	\$0	\$0
Student Tuition	\$26,946	\$53,892	\$80,838	\$80,838	\$107,784
Narrative/Explanation: Tuition was calculated based on \$224.55 per credit hour with 5, 10, 15, 15, and 20 students completing 12 credit hours per semester for years 1 through 5.					
TOTAL	\$26,946	\$53,892	\$80,838	\$80,838	\$107,784

B. Breakdown of Budget Expenses/Requirements	Year of Program				
	1 st Year	2 nd Year	3 rd Year	4 th Year	5 th Year
Administrative/Other Professional Staff	\$0	\$0	\$0	\$0	\$0
Faculty	\$10,440	\$20,880	\$31,320	\$31,320	\$41,760
Narrative/Explanation: Amounts shown reflect a percentage of the faculties' salary that will be used to teach students enrolled in the proposed program.					

Graduate Assistants	\$0	\$0	\$0	\$0	\$0
Student Employees	\$0	\$0	\$0	\$0	\$0
Equipment and Instructional Materials	\$2,000	\$2,000	\$2,000	\$2,000	\$2,000
Narrative/Explanation: Amounts shown will be used for annual upgrades of software and computers. Printers are upgraded on a four-year rotation.					
Library	\$0	\$0	\$0	\$0	\$0
Contractual Services	\$0	\$0	\$0	\$0	\$0
Other Support Services	\$0	\$0	\$0	\$0	\$0
Commodities	\$0	\$0	\$0	\$0	\$0
Printing	\$0	\$0	\$0	\$0	\$0
Telecommunications	\$0	\$0	\$0	\$0	\$0
Travel	\$0	\$0	\$0	\$0	\$0
Awards and Grants	\$0	\$0	\$0	\$0	\$0
TOTAL	\$12,440	\$22,880	\$33,320	\$33,320	\$43,760

Attachment

ATTACHMENT A

**SOUTHEASTERN OKLAHOMA STATE UNIVERSITY
BACHELOR OF SCIENCE IN EARLY INTERVENTION AND CHILD DEVELOPMENT**

Degree Requirements		Credit Hours
General Education Courses		Minimum 44
Communication		9
ENGL 1113	Grammar and Composition	3
ENGL 1213	Grammar and Composition	3
COMM 1233 or COMM 2213	Interpersonal Communication Business and Professional Speaking	3
Social and Behavioral Science		12
POSC 1513	American Federal Government	3
HIST 1513 or HIST 1523	United States History to 1876 United States History since 1876	3
ECON 2113 or GEOG 2723 or SOC 1113	Principles of Macroeconomics World Regional Geography Principles of Sociology	3
HPER 1113 or PSY 1113	Wellness and Positive Life Styles Introduction to Psychology	3
Science and Mathematics		11
	Biology	4
	Physical Science	4
	Mathematics	3
Humanities		9
	Humanities, Philosophy	3-6
	Fine Arts	3-6
	Foreign Language	0-3
Computer Proficiency Requirement		3
CIS 1003 or BIM 1553	Computers in Society Business Computer Applications	3
Major Requirements		60
Core Courses		18
EDUC 2013	Foundations of Education	3
ELED 2213	Foundations of Literacy	3
ENG 4893	Children's Literature and Story Telling	3
HPER 3553	Elementary School Program	3
SPED 2123	Introduction to Individuals with Exceptionalities	3

THTR 4803	Creative Expressions in the Elementary School	3
Early Child Care		42
PSY 3123	Child and Adolescent Development for Education Majors	3
HPER 4813	Nutrition and Weight Management	3
ORGL 4113	Ethics and Organization	3
PSY 2243	Introduction to Human Development	3
PSY 3213	Psychology of Childhood	3
*EICD 3024	Families and the Developing Child	4
*EICD 3034	Professional and Ethical Practice	4
*EICD 3044	Individual Learning Differences in Young Children	4
*EICD 3064	Collaboration with Families, Health/Mental Health Professionals and Communities	4
*EICD 4074	Assessment and Intervention for Infants and Children: Birth-Three	4
*EICD 4084	Assessment and Research Based Instruction: Literacy and Reading	4
*EICD 4113	Language Development	3
General Electives		20
Students will take elective courses to bring total number of credit hours to 124		
Total		124

*Asterisks denote new courses

Meeting of the
OKLAHOMA STATE REGENTS FOR HIGHER EDUCATION
June 27, 2013

AGENDA ITEM #15:

Program Deletions.

SUBJECT: Approval of institutional requests.

RECOMMENDATION:

It is recommended that the State Regents approve the following requests for program deletions as described below.

BACKGROUND:

The University of Oklahoma (OU) requests authorization to delete the programs listed below:

- Master of Natural Science in Natural Science (181)
- Graduate Certificate in Risk and Crisis Management (372)
- Graduate Certificate in Library Information Studies (242)

POLICY ISSUES:

These actions are consistent with the State Regents' Academic Program Review policy.

ANALYSIS:

OU requests authorization to delete the Master of Natural Science in Natural Science (181). This program was approved by the State Regents prior to 1990. Reasons for requesting the deletion include:

- OU reports a lack of demand for the program and is unable to meet productivity numbers as required by policy.
- There is 1 student currently enrolled with an expected graduation date of Spring 2014.
- No courses will be deleted as they are used in other degree programs.
- No funds are available for reallocation as they are used to support other programs within the department.

OU requests authorization to delete the Graduate Certificate in Risk and Crisis Management (372). This program was approved by the State Regents at the June 29, 2009 meeting. Reasons for requesting the deletion include:

- OU reports the faculty interested in providing this program left the university.
- There are no students currently enrolled.
- No courses will be deleted.
- No funds are available for reallocation.

OU requests authorization to delete the Graduate Certificate in Library Information Studies (242). This program was approved by the State Regents prior to 1990. Reasons for requesting the deletion include:

- OU reports the program is no longer relevant to the practice of librarianship and there has not been student interest in the program.
- There are no students currently enrolled.
- No courses will be deleted.
- No funds are available for reallocation.

Meeting of the
OKLAHOMA STATE REGENTS FOR HIGHER EDUCATION
June 27, 2013

AGENDA ITEM #16:

Intensive English Programs.

SUBJECT: Approval of Team recommendations for Intensive English Programs.

RECOMMENDATION:

It is recommended that the State Regents approve the team recommendation for the intensive English programs as follows: 1) The Language Company for one year, 2) the English Language Center in Edmond, Oklahoma for five years, and 3) the Center for English as a Second Language at the University of Oklahoma for three years.

BACKGROUND:

English language centers have been reviewed through the State Regents' Intensive English Program Approval and Review policy, since 1980 (formerly Policy Statement on Admissions of Students for Whom English is a Second Language). Beginning with the 1995 review, out-of-state evaluators with expertise in directing English as a Second Language (ESL) programs have been hired to conduct the reviews.

In Fall 1996, an English Language Institute committee was convened to work with State Regents' staff to revise the policy to include standards for the centers and an approval process. This committee consisted of representatives from proprietary and institutionally-based English language centers. The State Regents approved this policy in April 1997. The policy was reviewed again and updated in 2009.

The approval process includes a self-study report and an external evaluation team visit. The evaluation team prepares a report of findings on each standard and recommends one of the following: (1) approval without qualification with reexamination in five years; (2) provisional approval with reexamination in one, two, three or four years; or (3) deny approval. The evaluators compare the self-study to the standards outlined in the policy and verify the information in the self-study with observations from the on-site visit, providing a written report with recommendations. The center's staff has the opportunity to provide a written response to the evaluators' report.

POLICY ISSUES:

Consistent with State Regents' Institutional Admission and Retention policy, students for whom English is a second language must demonstrate English proficiency by meeting standards described in this policy. Students without the minimal Test of English as a Foreign Language (TOEFL) score (500 for undergraduate and 550 for graduate students) who have earned a TOEFL score of at least 460 for undergraduate or 500 for graduate students, or students without the minimal International English Language Testing System (IELTS) score (5.5 for undergraduate and 6.5 for graduate students) who have earned an IELTS score of at least 5.0 for undergraduate or 5.5 for graduate students, must complete an Intensive English Program (IEP) approved by the State Regents prior to admission.

IEP's are evaluated on criteria for the language program, administration, faculty, student services, finances and physical facilities, following the standards in the Intensive English Program Approval and Review policy. Embedded in these broad categories are standards for the curriculum, recruitment, assessment and contact hours of the program, standards for the faculty and administrators of the program and standards for advising and orientation services offered to students enrolled in the program.

ANALYSIS:

As required by policy, a team of out-of-state evaluators reviewed the IEPs and a summary of the two-person evaluation teams' credentials is provided followed by an outline of the recommendations for the IEPs reviewed.

1) The Language Company (TLC) in Ada, Oklahoma was reviewed by the following evaluators:

- **Dr. Susan Gonzo**, Independent Consultant, English Language Program Evaluation, Director (retired), Intensive English Institute, The University of Illinois, Urbana, Illinois.
 Credentials: Doctor of Philosophy in English Linguistics from the University of Wisconsin, Madison, Wisconsin; Master of Arts in English Literature and Linguistics from the University of Wisconsin, Madison, Wisconsin; and a Bachelor of Science in Secondary Education – English, from the University of Wisconsin, Madison, Wisconsin.

- **Dr. J. K. “Kurk” Gayle**, Director, Intensive English Program and English as a Foreign Language, Texas Christian University, Fort Worth, Texas.
 Credentials: Doctor of Philosophy in English from Texas Christian University, Fort Worth, Texas; Master of Arts in Linguistics from The University of Texas at Arlington, Arlington, Texas; and a Bachelor of Arts in Foreign Service from Baylor University, Waco Texas.

The Language Company (TLC)	
Date of Visit:	March 14-15, 2013
Evaluators' Recommendation:	Provisional approval with reexamination in one year.
Summary of Evaluators' Report:	<ul style="list-style-type: none"> ➤ The evaluation team believes that The Language Company – Ada, Oklahoma does not meet all standards for “approval without qualification” required by the State Regents. Five general standards, enumerated below, are unmet. ➤ The 2013 evaluation team has observed and is concerned that the two largest findings reported by the 2008 evaluation team have not been addressed by the IEP in substantive or enduring ways. Our findings are that two standards continue not to be met. First, then, we have to repeat the 2008 evaluation team’s reiteration of “the recommendation made by the 2003 evaluation team, namely, that the academic program would benefit from instructors with MA degrees in TESL.” Second, our findings must also repeat what the 2008 evaluation team discovered: “that the domain of academic English is underrepresented in the curriculum.” Our report, below, elaborates our concern that the IEP fails to meet <ul style="list-style-type: none"> (1) the standard for faculty in two areas: (1A) degree level and (1B) professional development; and (2) the standard for curriculum in three areas: (2A) quality, (2B) scope, and (2C) faculty/student ratio.

The Language Company (TLC)	
	<p>Our 2013 report, then, offers some new and other specific detail to support the two general repeated concerns on previous reports for this IEP, the report from as far back as 2003 and the other from as recent as 2008.</p> <p>➤ The 2013 evaluation team has made three additional general findings that the IEP does not meet the State Regents’ standards for “approval without qualification.” The IEP does not meet</p> <ul style="list-style-type: none"> (3) the standard for Recruitment; (4) the standard for Administration with respect to the Director’s credentials; (5) the standard in terms of adequate facilities.
Center’s Staff Comments	TLC provided factual corrections to the report.
State Regents’ Staff Comments	There appear to be some miscommunications between the TLC staff, East Central University (ECU) staff, and the evaluation team members. TLC and ECU’s concerns with the report have been reviewed by staff. In review of the issues evaluators found on standards within State Regents’ policy, staff concur with the team’s recommendation for provisional approval with reexamination in one year, and has noted in the report areas of clarification for TLC, ECU, and the next review team.

2) The English Language Center (ELC) in Edmond, Oklahoma was reviewed by the following evaluators:

- **Dr. Susan Carkin**, Dean, Division of Language, Literature and Communication, Lane Community College, Eugene, Oregon.
 Credentials: Doctor of Philosophy in Applied Linguistics from Northern Arizona University, Flagstaff, Arizona; Master of Arts in English as a Second Language from Utah State University, Logan, Utah; Master of Arts in English from the University of Oregon, Eugene, Oregon; Bachelor of Arts in English from Southern Illinois University, Carbondale, Illinois; and a Bachelor of Arts in Spanish from Southern Illinois University, Carbondale, Illinois.
- **Dr. Jim Hamrick**, Director, English Language Institute, University of Tennessee, Knoxville, Tennessee.
 Credentials: Doctor of Philosophy in Higher Education from the University of Michigan, Ann Arbor, Michigan; Master of Arts in Teaching in Teaching English as a Second Language from Georgetown University, Washington D.C.; and a Bachelor of Arts with Honors in English from the University of North Carolina at Chapel Hill, Chapel Hill, North Carolina.

English Language Center (ELC)	
Date of Visit:	April 1-2, 2013
Evaluators’ Recommendation:	Approval without qualification with reexamination in five years.
Summary of Evaluators’ Report:	➤ The ELC has made an enormous curricular shift since January 2012, with attendant changes in personnel and program growth. That such changes have happened with the high degree of student and staff satisfaction found onsite is remarkable--a hallmark of not only effective leadership, but also the

English Language Center (ELC)	
	<p>professionalism of faculty and staff and a deeply shared commitment to the quality learning experiences of its students.</p> <ul style="list-style-type: none"> ➤ The ELC curriculum is in a position that is in some sense transitional and therefore vulnerable: as it works to develop curriculum within the Common European Framework of Reference for Languages to meet the needs of its students, the program has committed to a particular framework and communicative orientation across 9-10 proficiency levels using a single text series. ELC may find that these commitments restrain program growth and curricular development unless it is able to live up to its mission of research-based instruction. The ELC will need to stay abreast of research and trends in Second Language Acquisition and English for Academic Purposes in order to effectively refine their curriculum. ➤ As the program accommodates more students who plan to attend American higher education, ELC will need to prepare its curriculum, especially at the intermediate-advanced levels, to meet the needs of such students by integrating explicit course objectives for academic literacy and English for academic purposes.
Center's Staff Comments	None
State Regents' Staff Comments	State Regents staff concur with these recommendations.

3) The Center for English as a Second Language at the University of Oklahoma was reviewed by the following evaluators:

- **Dr. Susan Carkin**
- **Dr. Jim Hamrick**

Center for English as a Second Language (CESL) at the University of Oklahoma	
Date of Visit:	April 3-4, 2013
Evaluators' Recommendation:	Provisional approval with reexamination in three years, and an interim progress report in one year.
Summary of Evaluators' Report:	<ul style="list-style-type: none"> ➤ CESL has highly effective administrative systems for delivery of instruction and student services. Faculty and staff communicate and collaborate effectively. CESL personnel are committed to the best interests of the program's students. ➤ CESL has strong leadership. CESL's director has made extraordinary efforts in "integrating" CESL with the larger OU community; she is both effective and widely appreciated for her role in supporting international education and intercultural understanding across the institution. ➤ The CESL program has grown very fast, more than doubling the student population in 3 years, but lacks a critical core of MA/TESL-qualified instructors to support program quality. ➤ This growth in recent years has burdened its administration and its systems for curriculum development and assessment of student achievement. CESL does not have enough expert personnel to implement effective change in

Center for English as a Second Language (CESL) at the University of Oklahoma	
	<p>these areas. The review team is aware that CESL made changes as a result of the 2010 review, particularly in the areas of faculty qualifications, professional development, and assessment of students (based on level-specific course outcomes). But the team is concerned that those changes were implemented without providing the critical expertise or systems necessary for a high quality, academically-oriented intensive English program. CESL's rapid enrollment growth has required administrators and teachers to focus attention on teaching and student service, limiting their ability to focus on curriculum and assessment.</p>
Center's Staff Comments	<p>CESL provided factual corrections to the report and comments.</p>
State Regents' Staff Comments	<p>State Regents' staff met with CESL representatives to discuss factual corrections and CESL's concerns with the report. In review of the issues evaluators found on standards within State Regents' policy, staff concur with the team's recommendation for provisional approval with reexamination in three years, and has noted in the report areas of clarification for CESL and the next review team.</p>

Meeting of the
OKLAHOMA STATE REGENTS FOR HIGHER EDUCATION
June 27, 2013

AGENDA ITEM #17:

Legislative Update and Resolution.

Meeting of the
OKLAHOMA STATE REGENTS FOR HIGHER EDUCATION
June 27, 2013

AGENDA ITEM #18:

Commendations.

RECOMMENDATION:

It is recommended that the State Regents accept this report and commend staff for state and national recognitions.

RECOGNITIONS:

State Regents' staff received the following state and national recognitions:

- **Goldie Thompson**, director of Teacher Education and the Oklahoma Teacher Connection and **Deena Thomas**, Outreach coordinator, were among Muskogee's legislators, superintendent, administrators, teachers, parents, and community leaders to congratulate and celebrate Muskogee's Rougher Alternative School for being named the 2013 National School of Character by the Character Education Partnership (CEP) of Washington, D.C. The Rougher Alternative School is Oklahoma's first alternative school to receive national Character recognition.
- **Saeed Sarani**, STEM Curriculum and Professional Development coordinator, Oklahoma Teacher Connection, presented *A Statewide Approach to Building an Elementary Mathematics Specialist Program* before more than 100 PK-12 mathematic teachers and administrators at the Oklahoma Council of Teachers of Mathematics (OCTM) conference, which was held at the University of Central Oklahoma (UCO) on June 6, 2013. The OEMS process allows early childhood and elementary teachers earn an elementary PK-5 mathematics certification.
- **Chancellor Glen D. Johnson** attended Oklahoma Heritage Association Hall of Fame reunion luncheon and media announcement of the 2013 inductees in Oklahoma City; participated in conference call with Dave Spence, president of the Southern Regional Education Board (SREB); served as keynote speaker for Oklahoma City Community College's (OCCC) 2013 Spring Commencement at the Cox Convention Center in Oklahoma City; attended the Oklahoma Foundation for Excellence (OFE) Academic Awards Banquet in Oklahoma City; participated in Southern Regional Education Board (SREB) Executive Committee conference call; served as keynote speaker at the Oklahoma College and University Professional Association for Human Resources (OCUPA-HR) Spring Conference in Norman; attended reception for the Oklahoma Academy in Oklahoma City; attended Oklahoma State Fair Board meeting in Oklahoma City; met with Oklahoma State Supreme Court Chief Justice Tom Colbert and Senator Tom Ivester in Oklahoma City to discuss the Oklahoma's Promise Scholarship Program; met with Dan Schiedel, Executive Director of OETA, in Oklahoma City to discuss higher education issues; served as keynote speaker at the second annual E³ Summit at Southeastern Oklahoma State University (SEOSU) in Durant; provided remarks at the Presidents' Retirement Event in Oklahoma City honoring President Terry Britton; attended and facilitated the first meeting of the Campus Safety and Security Task Force in Oklahoma City; met with Attorney General Scott Pruitt in Oklahoma City to discuss higher education issues; met with Dr. Keith Gaddie with the University of

Oklahoma in Oklahoma City to discuss higher education issues; participated in conference call with Dave Spence, president of the Southern Regional Education Board (SREB); spoke at the dedication of Cynthia S. Ross Hall at Cameron University in Lawton; provided remarks at Retirement Dinner honoring President Cindy Ross at Cameron University in Lawton; participated in Southern Regional Education Board (SREB) Finance Committee conference call; provided introduction of Tyrone P. Thomas, speaker for the *Executive Contracts* session at the American Association of State Colleges and Universities (AASCU) Millennium Leadership Initiative Institute in Washington, D.C.; served as panelist for the *Governance and Working with Boards* session at the American Association of State Colleges and Universities (AASCU) Millennium Leadership Initiative Institute in Washington, D.C.; provided welcoming remarks at the Future of Workforce Development: Building Education and Industry Partnerships conference at OSU-OKC in Oklahoma City; met with Dr. Andy Baxter, Vice President for Educator Effectiveness at the Southern Regional Education Board (SREB), and Representative Johnnie Roebuck (Arkansas) in Oklahoma City to discuss higher education issues; served as keynote speaker for the Jim Thorpe Association Leadership Luncheon at the Jim Thorpe Museum in Oklahoma City; met with State Chief Information Officer Alex Pettit and Secretary of Transportation Gary Ridley in Oklahoma City to discuss higher education issues; participated in conference call with Art Coleman to discuss higher education issues; presented at the Annual State Regent's Employee Recognition Event at the Jim Thorpe Museum in Oklahoma City; attended reception for the Oklahoma Fellows of the American Bar Foundation hosted by Justice Yvonne Kauger in Oklahoma City.

Meeting of the
OKLAHOMA STATE REGENTS FOR HIGHER EDUCATION
June 27, 2013

AGENDA ITEM #19:

Executive Session.

SUBJECT: Possible vote to go into executive session pursuant to Title 25, Oklahoma Statutes, Section 307(B)(4), for confidential communications between a public body and its attorneys concerning pending investigations, claims or actions.

Meeting of the
OKLAHOMA STATE REGENTS FOR HIGHER EDUCATION
June 27, 2013

AGENDA ITEM #20-a (1):

Programs.

SUBJECT: Approval of institutional requests.

RECOMMENDATION:

It is recommended that the State Regents approve modifications to existing programs, as described below.

BACKGROUND:

University of Oklahoma (OU)

- 25 degree program requirement changes
- 1 degree designation change

Oklahoma Panhandle State University (OPSU)

- 1 degree program requirement change

Northeastern Oklahoma A&M College (NEOAMC)

- 5 degree program option additions
- 2 degree program requirement changes

Oklahoma State University – Institute of Technology (OSUIT)

- 1 degree program name change

Rose State College (RSC)

- 19 degree program requirement changes
- 1 degree program option addition
- 2 degree program option deletions
- 1 degree program name change

Tulsa Community College (TCC)

- 1 degree program requirement change
- 1 degree program option deletion

POLICY ISSUES:

These actions are consistent with the State Regents' Academic Program Approval policy.

ANALYSIS:

OU – Doctor of Philosophy in Geophysics (356)

- Degree program requirement changes

- Change 15 credit hours of core courses from current list to the following: GPHY 5364, GPHY 6970 (Advanced Non-Seismic Methods), GPHY 5733, GPHY 5102, GPHY 6970 (Earthquake Seismology), GPHY 5513, GPHY 5523, GPHY 5613, and GPHY 5623.
- The proposed change is the result of faculty turn-over and some courses no longer being offered.
- No new courses will be added and no courses will be deleted.
- Total credit hours for the degree will not change.
- No funds are requested from the State Regents.

OU – Doctor of Philosophy in Electrical and Computer Engineering (061)

Degree program requirement change

- Add requirement that courses may also be selected from an approved list of G3000 courses.
- Change requirement of 9 credit hours of course work in one ECE area to 4 courses in one ECE area.
- Add requirement that students must be enrolled in the graduate section of courses offered at both the graduate and undergraduate level.
- Remove requirement that half of the course work must be from the ECE, CS, or TCOM disciplines.
- Remove requirement of presenting a paper at a regional or national conference.
- Remove requirement of submitting a paper to a peer reviewed journal.
- Remove requirement of passing the ECE Qualifying Exam.
- Require students to pass the ECE Preliminary Exam.
- Change minimum credit hours for ECE 6980 from 30 to 6.
- The proposed changes update the curriculum to allow students more flexibility in course selection to accommodate academic interests.
- No new courses will be added and no courses will be deleted.
- Total credit hours for the degree will not change.
- No funds are requested from the State Regents.

OU – Master of Science in Electrical and Computer Engineering (060)

Degree program requirement changes

- Remove minimum requirement of ECE, CS, or technical electives.
- Add requirement that courses may also be selected from an approved list of G3000 courses.
- Add requirement that students must be enrolled in the graduate section of courses offered at both the graduate and undergraduate level.
- The proposed changes update the curriculum to allow students more flexibility in course selection to accommodate academic interests.
- No new courses will be added and no courses will be deleted.
- Total credit hours for the degree will not change.
- No funds are requested from the State Regents.

OU – Doctor of Philosophy in Adult and Higher Education (114)

Degree program requirement changes

- Add EDAH 6970 and remove EDAH 5043 and EDAH 6970.
- The proposed change combines the content of two optional courses into one course to provide students with exposure to both being a conductor of research and a consumer of research.
- One new course will be added and no courses will be deleted.
- Total credit hours for the degree will not change.
- No funds are requested from the State Regents.

OU – Doctor of Philosophy in English (070)

Degree program requirement change

- Require students to have reading proficiency in only one foreign language instead of two.
- The proposed change aligns the requirements with similar programs at peer universities.
- No new courses will be added and no courses will be deleted.
- Total credit hours for the degree will not change.
- No funds are requested from the State Regents.

OU – Master of Science in Library Information Studies in Library Information Studies (151)

Degree program requirement changes

- Add LIS 5713 or LIS 5733 as a required course.
- Remove 12 credit hours of “Guided Electives.”
- Change credit hours for “General Electives” from 9 to 18 for non-thesis students and from 3-7 to 12-16 for thesis students.
- The proposed changes will ensure all students have a fundamental knowledge of library and information studies and provide greater flexibility in selecting electives.
- No new courses will be added and no courses will be deleted.
- Total credit hours for the degree will not change.
- No funds are requested from the State Regents.

OU – Bachelor of Fine Arts in Musical Theater in Musical Theater (342)

Degree program requirement changes

- Require students to complete 4 credit hours from the following courses: MTHR 1112, MTHR 2122, MTHR 3122, MTHR 4122, and MTHR 4252.
- Require students to complete 2 credit hours from the following courses: MTHR 1422, MTHR 2442, MTHR 3442, MTHR 4442, and MTHR 4452.
- Require students to complete 4 credit hours from the following courses: DANC 1212, DANC 2212, DANC 2314, or DANC 4214.
- Require students to complete 2 credit hours from the following courses: DANC 1312, DANC 2312, or DANC 3314.
- The proposed changes will accommodate students who enter the program with higher levels of ability and provide more flexibility on course selection to meet requirements.
- No new courses will be added and no courses will be deleted.
- Total credit hours for the degree will not change.
- No funds are requested from the State Regents.

OU – Master of Science in Construction Management in Construction Management (243)

Degree program requirement changes

- Remove CNS 5952 and add 2 credit hours of CNS 5980.
- The proposed changes align the curriculum with other graduate programs to allow thesis students more time to work on their research.
- No new courses will be added and no courses will be deleted.
- Total credit hours for the degree will not change.
- No funds are requested from the State Regents.

OU – Bachelor of Arts in Journalism in Journalism Advertising (134)

Bachelor of Arts in Journalism in Journalism Broadcast/Electronic Media (135)

Bachelor of Arts in Journalism in Journalism (137)

Degree program requirement changes

- Change the credit hours required for “Free Electives” so that students only complete enough credit hours to bring their total credit hours to 124.
- The proposed change is the result of changes with the Accrediting Council on Education in Journalism and Mass Communications.
- No new courses will be added and no courses will be deleted.
- Total credit hours for the degree will change from 130 to 124.
- No funds are requested from the State Regents.

OU – Bachelor of Arts in Environmental Sustainability in Environmental Sustainability (381)

Bachelor of Science in Environmental Sustainability in Environmental Sustainability (382)

Degree program requirement changes

- Change Grade Point Average (GPA) requirement for course work completed at OU, for major course work, and overall course work from 2.0 to 2.25.
- Add GEOG 3773 to “Major Requirements.”
- Change credit hours required for “Major Requirements” from 22 to 25.
- The proposed GPA change aligns the requirements for the degree with the requirements for the College of Atmospheric and Geographic Sciences.
- The proposed curricular changes will provide students with a better understanding of contexts used in later courses.
- No new courses will be added and no courses will be deleted.
- Total credit hours for the degree will not change.
- No funds are requested from the State Regents.

OU – Bachelor of Arts in Geographic Information Science (367)

Bachelor of Science in Geographic Information Science (368)

Degree program requirement changes

- Change Grade Point Average (GPA) requirement for course work completed at OU, for major course work, and overall course work from 2.0 to 2.25.
- The proposed GPA change aligns the requirements for the degree with the requirements for the College of Atmospheric and Geographic Sciences.
- No new courses will be added and no courses will be deleted.
- Total credit hours for the degree will not change.
- No funds are requested from the State Regents.

OU – Bachelor of Arts in Geography in Geography (328)

Bachelor of Science in Geography in Geography (289)

Degree program requirement changes

- Change Grade Point Average (GPA) requirement for course work completed at OU, for major course work, and overall course work from 2.0 to 2.25.
- Add GEOG 3773 to “Major Requirements.”
- Require students to complete one of the following courses: GEOG 3223, GEOG 4243, GEOG 4253, or GEOG 4853.
- Change credit hours required for “Major Requirements” from 31 to 37.
- The proposed GPA change aligns the requirements for the degree with the requirements for the College of Atmospheric and Geographic Sciences.
- The proposed curricular change will provide students with a better understanding of contexts used in later courses.
- No new courses will be added and no courses will be deleted.

- Total credit hours for the degree will not change.
- No funds are requested from the State Regents.

OU – Bachelor of Science in Meteorology in Meteorology (165)

Degree program requirement changes

- Change Grade Point Average (GPA) requirement for course work completed at OU, for major course work, and overall course work from 2.0 to 2.25.
- Allow students to take METR 1313 as an alternative course to CS 1313.
- Require the Meteorology, Hydrology, or Climatology elective to be an upper division course.
- The proposed GPA change aligns the requirements for the degree with the requirements for the College of Atmospheric and Geographic Sciences.
- The proposed curricular changes will provide students with greater flexibility in course selection.
- No new courses will be added and no courses will be deleted.
- Total credit hours for the degree will not change.
- No funds are requested from the State Regents.

OU – Bachelor of Science in Geology in Geology (094)

Bachelor of Science in Geophysics in Geophysics (097)

Degree program requirement changes

- Change Grade Point Average (GPA) requirement for course work completed at OU, for major course work, and overall course work from 2.0 to 2.5.
- Remove MATH 1823, MATH 2423, MATH 2433, and MATH 2443.
- Add MATH 1914, MATH 2924, and MATH 2934.
- The proposed GPA change will provide the department better oversight of students entering the program and help with retention efforts.
- The proposed curricular changes are the result of changes in the Calculus course sequence.
- No new courses will be added and no courses will be deleted.
- Total credit hours for the degree will not change.
- No funds are requested from the State Regents.

OU – Bachelor of Fine Arts in Music (305)

Degree designation change and degree program requirement changes

- Change degree designation to Bachelor of Arts.
 - The proposed designation is the result of curricular changes in 2012 that eliminated Fine Arts courses and recommendation from the National Associations of Schools of Music accreditation team.
- Add 1 semester of MUTE 1000.
- Change credit hours required for “Performance and Music Electives” from 19 to 23.
- Change credit hours required for Applied Music from 12 to 8.
- Change credit hours required for “Advised Music Electives” from 4 to 8.
- Change credit hours required for “Musicology and Music Literature” from 8 to 11 and require the following courses: MUSC 1312, MUSC 2313, MUSC 2323, and MUSC 3333.
- Change credit hours required for the major from 45 to 48.
- Remove 12 credit hours of College of Fine Arts Advised Electives from “Other Requirements.”
- Reduce credit hours for “Other Requirements” from 50 to 44.
- The proposed changes will align the curriculum with the National Associations of Schools of Music accreditation standards.

- No new courses will be added and no courses will be deleted.
- Total credit hours for the degree will change from 124-134 to 120-131.
- No funds are requested from the State Regents.

OU – Bachelor of Musical Arts in Music (261)

Degree program requirement changes

- Change credit hours required for “Major Area” from 27 to 19.
- Add 1 semester of MUTE 1000.
- Require students to complete MUTE 1311, MUTE 1321, MUTE 2311, and MUTE 2321 or MUTE 1332 and MUTE 1342.
- Remove 4 credit hours of “Advised Music Electives.”
- Change credit hours required for “Advised Music Electives” from 8-9 to 9.
- Change credit hours required for “Secondary Area” from 33-43 to 33.
- The proposed changes will align the curriculum with the National Associations of Schools of Music accreditation standards.
- No new courses will be added and no courses will be deleted.
- Total credit hours for the degree will change from 124-134 to 124-135.
- No funds are requested from the State Regents.

OU – Bachelor of Music in Piano Pedagogy (257)

Degree program requirement changes

- Change credit hours required for “General Education: from 32-39 to 34-45.
- Change credit hours required for “Free Electives” from 3-4 to 4.
- Add 1 semester of MUTE 1000.
- The proposed changes will align the curriculum with the National Associations of Schools of Music accreditation standards.
- No new courses will be added and no courses will be deleted.
- Total credit hours for the degree will change from 124-134 to 124-135.
- No funds are requested from the State Regents.

OU – Bachelor of Musical Education in Music (306)

Degree program requirement changes

- Change credit hours required for MUTE 1010 (Recital Attendance) from 6 to 3.
- Remove MUED 1730, MUED 3043, MUED 3260, MUED 3270, MUED 3720, MUED 3723, MUED 3730, MUED 3733, MUED 3740, MUED 3743, MUED 3773, and MUED 5562 from “Education and Music Education.”
- Add MUED 3823, MUED 3883, MUED 3843, and MUED 3853 to “Education and Music Education.”
- Change credit hours required for “Education and Music Education” from 43-45 to 35-37.
- Remove COMM 1113/2613 from “General Education.”
- Allow students to complete any 3 credit hours of college-level math course to satisfy General Education requirement.
- Change credit hours required for “General Education” from 31-44 to 27-41.
- Change Grade Point Average (GPA) requirement for course work completed at OU and overall course work from 2.5 to 2.75.
- The proposed changes will align the curriculum with the National Associations of Schools of Music accreditation standards and will reduce the total credit hours required to meet national trends.
- No new courses will be added and no courses will be deleted.

- Total credit hours for the degree will change from 132-148 to 120-136.
- No funds are requested from the State Regents.

OU – Bachelor of Music in Music (172)

Degree program requirement changes

- For the “Music Composition” option:
 - Add MUTE 1000.
 - Total credit hours for the option change from 85 to 83.
- For the “Organ” option:
 - Remove MUTE 3272, VOIC 2000/4000.
 - Add MUTE 1000, MUTE 4423, MULI 4453, and 3 credit hours of “Advised Music Electives.”
 - Total credit hours for the option change from 82 to 87.
- For the “Piano” option:
 - Add MUTE 1000, and 4 credit hours of “Advised Music Electives.”
 - Remove MUTH 4853.
 - Total credit hours for the option change from 86 to 87.
- For the “Voice” option:
 - Remove MUTE 3282 and MUTE 3292 and add MUTE 1282, MUTE 1292, MUTE 2282, and MUTE 2292.
 - Remove MUED 4892 from “Music Education and Electives.”
 - Remove ITAL 1225 and change credit hours required for “Foreign Language Requirement” from 20 to 15-20.
 - Total credit hours for the option change from 74 to 79-80.
- No new courses will be added and no courses will be deleted.
- Total credit hours for the degree will change from 124-134 to 124-136 depending on option.
- No funds are requested from the State Regents.

OPSU – Bachelor of Science in Animal Science (003)

Degree program requirement changes

- For the “General Animal Science” option:
 - Remove ANSI 2182 or ANSI 3113, ANSI 2442, ANSI 3333, and ANSI 3643 from “Major” courses.
 - Add ANSI 2123, ANSI 3643, and ANSI 4113 to “Major” courses.
 - Change credit hours required for “Major” courses from 29-30 to 25.
 - Remove ECON 2343 and CIS 2113.
 - Remove 4 credit hours of physical science elective as an alternative to CHEM 2015.
 - Remove 4 credit hours of biology elective as an alternative to BIOL 1504.
 - Add 10 credit hours of chemistry elective and 8 credit hours of biology elective.
- For the “Business” option:
 - Remove ANSI 2182 or ANSI 3113, ANSI 2442, ANSI 3333, and ANSI 3643 from “Major” courses.
 - Change credit hours required for “Major” courses from 29-30 to 19.
 - Remove 4 credit hours of physical science elective as an alternative to CHEM 3315.
 - Remove 4 credit hours of biology elective as an alternative to BIOL 1504.
 - Change credit hours required for “Animal Science Electives” from 4-6 to 8-10.
- For the “Livestock Production and Management” option:
 - Remove ECON 2343.
 - Remove 4 credit hours of physical science elective as an alternative to CHEM 3315.
 - Remove 4 credit hours of biology elective as an alternative to BIOL 1504.

- Add ANSI 4543, ANSI 3643, ANSI 4613 and ANSI 4643 to “Major” courses.
- Change credit hours required for “Major” courses from 29-30 to 38-39.
- Change credit hours required for “Management” courses from 6 to 9.
- Change credit hours required for “Additional” courses from 19-21 to 10-12.
- For the “Meat Science” option:
 - Remove ANSI 2442, ANSI 3543, and ANSI 3643 from “Major” courses.
 - Add ANSI 2213 to “Major” courses.
 - Change credit hours required for “Major” courses from 29-30 to 27-28.
 - Remove 4 credit hours of physical science elective as an alternative to CHEM 3315.
 - Remove BIOL 1504 and 4 credit hours of biology elective.
 - Add BIOL 2124.
 - Change credit hours for “Controlled Electives” from 9-11 to 6-7.
- For the “Nutrition” option:
 - Remove ANSI 2182 or ANSI 3113, ANSI 2442, and ANSI 3333 from “Major” courses.
 - Add ANSI 2123, ANSI 4113, ANSI 4763 or ANSI 4773 to “Major” courses.
 - Change credit hours required for “Major” courses from 29-30 to 34.
 - Remove ECON 2343.
 - Remove 4 credit hours of physical science elective as an alternative to CHEM 3315.
 - Remove 4 credit hours of biology elective as an alternative to BIOL 1504.
 - Change credit hours for “Controlled Electives” from 9-11 to 3.
- The proposed changes will provide students with more specialization in their field of interest or for preparation for graduate study.
- No new courses will be added and no courses will be deleted.
- Total credit hours for the degree will not change.
- No funds are requested from the State Regents.

NEOAMC – Associate in Science in Agriculture (002)

Degree program option additions

- Add options “Agriculture Business,” “Agriculture Education,” “Animal Science,” “Equine,” and “General Agriculture.”
- The proposed options will enhance and broaden the opportunities for students and will aid in the transfer of students into similar programs at four-year institutions.
- No new courses will be added and no courses will be deleted.
- Total credit hours for the degree will not change.
- No funds are requested from the State Regents.

NEOAMC – Associate of Arts in Social Science (044)

Degree program requirement changes

- Remove HIST 1113, POLS 1021 and POLS 1023 and add HIST 1483, HIST 1493, and HIST 2343.
- The proposed changes will aid students in transferring to similar programs at four-year institutions.
- No new courses will be added and no courses will be deleted.
- Total credit hours for the degree will not change.
- No funds are requested from the State Regents.

NEOAMC – Associate of Arts in Mass Communication (053)

Degree program requirement changes

- Remove MCOM 1123, MCOM 1133, and MCOM 2163 and add MCOM 2213, ART 2163, and MIS 2133.

- The proposed changes will ensure student have the content knowledge needed to be competent in the work place.
- No new courses will be added and no courses will be deleted.
- Total credit hours for the degree will not change.
- No funds are requested from the State Regents.

OSUIT – Associate in Applied Science in Multimedia Technology (034)

Degree program name change

- Change program name to “3D Modeling and Animation.”
- The proposed change is the result of a recommendation from the Advisory Committee and will better indicate to prospective students and employers the content of the degree.
- No new courses will be added and no courses will be deleted.
- Total credit hours for the degree will not change.
- No funds are requested from the State Regents.

RSC – Associate in Science in Pre-Nursing (Nurse Transfer) (034)

Degree program name change

- Change program name to “Baccalaureate Track – Nursing.”
- The proposed change will better delineate the Associate in Science program from the Associate in Applied Science in Nursing Science (056).
- No new courses will be added and no courses will be deleted.
- Total credit hours for the degree will not change.
- No funds are requested from the State Regents.

RSC – Associate in Applied Science in Aerospace Technology (132)

Degree program requirement changes

- Remove CHEM 1135, PHYS 2414 and PHYS 2401 and add CHEM 1114, PHYS 1513, and CIT 1113.
- The proposed changes will add courses that better meet the needs of the students seeking the degree.
- No new courses will be added and no courses will be deleted.
- Total credit hours for the degree will not change.
- No funds are requested from the State Regents.

RSC – Associate in Science in Geosciences (126)

Degree program requirement changes

- For the “Earth Science” option:
 - Change credit hours required for GEOL 2003 from 2 to 3 (2002) and GEOL 2802 from 2 to 1 (2801).
 - Add GEOL 1121.
 - Total credit hours for the option change from 16 to 15.
- For the “Atmospheric Science” option:
 - Change credit hours required for METR 2902 from 2 to 1 (2901).
 - Total credit hours for the option change from 10 to 9.
- The proposed changes reflect modifications in the depth of content coverage in the courses.
- No new courses will be added and no courses will be deleted.
- Total credit hours for the degree will change from 64-69 to 63-68.
- No funds are requested from the State Regents.

RSC – Associate in Science in Pre-Professional Health Care (040)

Degree program option deletion and degree program requirement changes

- Delete option “Pre-Physical Therapy.”
 - The curriculum requirements for this option have been included in the “Baccalaureate Track-Allied Health” option within this program.
 - No courses will be deleted as they are used in other programs.
 - No funds are available for reallocation.
- For the “Baccalaureate Track-Allied Health” option:
 - Add CIT 1103, ENGL 2053, PSYC 1113, and SOC 1113.
 - Remove CHEM 1145, LFSC 2035, PHYS 2414, and PHYS 2401.
 - Change credit hours required for option from 40-41 to 33.
 - Add “Support and Related Requirements” and include: CHEM 1145, LFSC 2035, PHYS 2414, and PHYS 2401.
 - The proposed changes better align the curriculum with similar Allied Health programs at four-year institutions.
- No new courses will be added and no courses will be deleted.
- Total credit hours for the degree will not change.
- No funds are requested from the State Regents.

RSC – Associate in Applied Science in Applied Technology (114)

Degree option name change

- For the “Drafting” option:
 - Change option name to “Digital Media Technology.”
 - The proposed change is the result of the technology centers no longer offering drafting and the decision to focus the option on digital media technology.
- No new courses will be added and no courses will be deleted.
- Total credit hours for the degree will not change.
- No funds are requested from the State Regents.

RSC – Associate in Applied Science in Business Administration (008)

Degree program requirement changes

- For the “Human Resources” option:
 - Remove 2 credit hours of business elective courses from “Support and Related Requirements” and add BA 1403.
 - Change credit hours required for “Support and Related Requirements” from 3 to 4.
- For the “Management,” “Small Business Operations,” “Corporate Education,” “Marketing/Social Media,” “Consumer Finance Administration,” and “General Business Administration,” options:
 - Change 3 credit hour of business elective course in “Support and Related Requirements” to require BA 1403.
- The proposed changes are the result of a recommendation from the Business Administration Advisory Committee to address the declining communication skills of college graduates.
- No new courses will be added and no courses will be deleted.
- Total credit hours for the degree will change from 62-63 to 62-64.
- No funds are requested from the State Regents.

RSC – Associate in Applied Science in Accounting (001)

Degree program requirement changes

- Remove ACCT 2903, ACCT 2191-3, and BA 1103 from “Program Requirements.”
- Change credit hours for “Program Requirements” from 33 to 24.

- Add 9 credit hours of “Program Electives” and include the following courses: ACCT 2213, ACCT 2343, ACCT 2093, and ACT 2413.
- Remove BA 2503 from “Support/Related Requirements” and add BA 1103.
- The proposed changes better align the curriculum with various professional certification requirements.
- No new courses will be added and no courses will be deleted.
- Total credit hours for the degree will not change.
- No new funds are requested from the State Regents.

RSC – Associate in Science in Biological Science (006)

Degree program requirement changes

- Remove LFSC 1215, LFSC 1315, LFSC 2035, LFSC 2103, LFSC 1134, and LFSC 2424 from “Program Requirements.”
- Add a minimum of 19 credit hours of BIOL courses to be selected from the following courses: BIOL 1093, BIOL 1134, BIOL 1215, BIOL 1315, BIOL 2035, BIOL 2103, BIOL 2424, and BIOL 2444.
- Move BIOL 1124 from “Support and Related Requirements” to “Program Requirements.”
- Change “Support and Related Requirements” to BIOL 2203.
- Change credit hours required for “Program Requirements” from 39 to 36-40.
- The proposed changes provide students with the flexibility to select courses that align with curriculum requirements in similar programs at four-year institutions.
- No new courses will be added and no courses will be deleted.
- Total credit hours for the degree will change from 63-67 to 62-66.
- No new funds are requested from the State Regents.

RSC – Associate in Science in Mathematics (029)

Degree program option additions

- Add options “General” and “Computer Science.”
- The proposed options will provide students with transferable options to four-year program.
- No new courses will be added and no courses will be deleted.
- Total credit hours for the degree will not change.
- No new funds are requested from the State Regents.

RSC – Associate in Applied Science in Multimedia Communication (113)

Degree program requirement changes

- Remove MULT 1153 and add MULT 2003.
- The proposed changes replace a course with a more appropriate one for the degree.
- No new courses will be added and no courses will be deleted.
- Total credit hours for the degree will not change.
- No new funds are requested from the State Regents.

RSC – Associate in Applied Science in Business Administration (008)

Degree program requirement changes

- For the “General Business Administration,” “Small Business Operations,” “Corporate Education,” “Marketing/Social Media,” “Consumer Finance Administration,” and “Management” options:
 - Add BA 1403 as a required course for “Support and Related Courses.”
- For the “Human Resources option:
 - Add BA 1403 and BA 2191 as required courses for “Support and Related Courses.”

- Change credit hours required for “Support and Related Courses” from 3 to 4.
- The proposed changes are the result of a recommendation from the Business Administration Advisory Committee and will address the declining communication skills of college graduates.
- No new courses will be added and no courses will be deleted.
- Total credit hours for the degree will change from 62-63 to 62-64.
- No new funds are requested from the State Regents.

RSC – Associate in Arts in History (125)

Associate in Arts in Psychology (042)

Associate in Arts in Sociology (124)

Degree program requirement changes

- Add EDUC 1101 as a required course in “General Education.”
- Change credit hours required for “General Education Electives” from 5-7 to 4-6.
- The proposed changes are being implemented in an effort to better acclimate students to college and improve retention and success.
- No new courses will be added and no courses will be deleted.
- Total credit hours for the degree will not change.
- No new funds are requested from the State Regents.

RSC – Associate in Arts in Pre-Education/Secondary Education (015)

Degree program requirement change

- Add EDUC 1101 as a required course in “General Education.”
- The proposed change is being implemented in an effort to better acclimate students to college and improve retention and success.
- No new courses will be added and no courses will be deleted.
- Total credit hours for the degree will change from 62 to 63.
- No new funds are requested from the State Regents.

RSC – Associate in Arts in Enterprise Development (675)

Degree program requirement changes

- Add EDUC 1101 as a required course in “General Education.”
- Change credit hours required for “General Education Electives” from 6 to 4-6.
- The proposed changes are being implemented in an effort to better acclimate students to college and improve retention and success.
- No new courses will be added and no courses will be deleted.
- Total credit hours for the degree will not change.
- No new funds are requested from the State Regents.

RSC – Associate in Arts in Political Science (050)

Degree program option addition, degree program option deletion and degree program requirement changes

- Add option “Pre-Law.”
 - The proposed option will accommodate an increase in students interested in attending law school.
- Delete the option “International Business.”
 - There are 3 students currently enrolled in the program and will be accommodated until they have completed their degree requirements.
 - No courses will be deleted as they will be used in other programs.

- The proposed deletion is the result of a faculty decision to refocus resources from low-producing options to other areas that are more beneficial to students.
- For the “General” option:
 - Add EDUC 1101 as a required course in “General Education.”
 - Change credit hours required for “General Education Electives” from 5-7 to 4-6.
 - Remove POLS 2603 from “Program Requirements” and add POLS 2403.
 - The proposed changes will better prepare students to transfer to a four-year institution.
 - The proposed changes will also better acclimate students to college and improve student retention and success.
- No new courses will be added and no courses will be deleted.
- Total credit hours for the degree will not change.
- No new funds are requested from the State Regents.

RSC – Associate in Arts in Health and Sport Sciences (107)

Degree program requirement changes

- Add EDUC 1101 as a required course in “General Education.”
- Change credit hours required for HPER 1112 from 2 to 3 (1113).
- For the “Health, Physical Education and Recreation” option:
 - Change credit hours required for “Support and Related Courses” from 8 to 5.
 - Change credit hours required for “General Education Electives” from 5-7 to 2.
 - Change credit hours required for “Program Requirements” from 19 to 20.
- For the “Exercise/Fitness Management” option:
 - Remove HPER 2423 from “Program Requirements” and add HPER 2633 and HPER 2612.
 - Change credit hours required for “Program Requirements” from 17 to 20.
 - Change credit hours required for “Support and Related Courses” from 10 to 5.
 - Add 2 credit hours of “General Education Elective.”
- For the “Personal Trainer” option:
 - Change credit hours required for HPER 2622 from 2 to 3 (2623) and for HPER 2642 from 2 to 3 (2643).
 - Remove 3 credit hours of “Support and Related Requirements.”
- The proposed changes will provide students with greater content knowledge.
- The proposed changes will also better acclimate students to college and improve student retention and success.
- No new courses will be added and no courses will be deleted.
- Total credit hours for the degree will not change.
- No new funds are requested from the State Regents.

RSC – Associate in Applied Science in Criminal Justice (049)

Degree program requirement changes

- For the “Criminal Justice” option:
 - Add EDUC 1101 as a required course in “General Education.”
 - Remove 2 credit hours of HPER courses in “General Education” and require students to complete HPER 1102.
 - Change credit hours required for “General Education Electives” from 5-7 to 4-6.
- For the “Police Science” option:
 - Add EDUC 1101 as a required course in “General Education.”
 - Remove 2 credit hours of HPER courses in “General Education” and require students to complete HPER 1113.
 - Remove POLS 2703 from “Program Requirements.”

- The proposed changes will better prepare students for transfer to four-year institutions.
- The proposed changes will also better acclimate students to college and improve student retention and success.
- No courses will be added and no courses will be deleted.
- Total credit hours for the degree will change from 62-64 to 62-63.
- No new funds are requested from the State Regents.

RSC – Associate in Arts in Family Service/Child Development (014)

Degree program requirement changes

- For all options:
 - Add EDUC 1101 as a required course in “General Education.”
 - Change credit hours required for “General Education Electives” from 5-7 to 4-6.
- For the “Child Development Specialty” option:
 - Add FSCD 1322 to “Program Requirements” and remove 2 credit hours of “Free Electives.”
 - Change credit hours required for FSCD 1333 from 3 to 2.
- For the “Family Services Specialty” option:
 - Change credit hours required for FSCD 2332 from 2 to 3 (2333) and for FSCD 2572 from 2 to 3 (2573).
 - Change credit hours required for “Free Electives” from 3 to 1 and require that the course is an FSCD course.
- The proposed changes update the curriculum to better serve students.
- The proposed changes will also better acclimate students to college and improve student retention and success.
- One new course will be added and no courses will be deleted.
- Total credit hours for the degree will not change.
- No new funds are requested from the State Regents.

RSC – Associate in Applied Science in Family Service/Child Development (091)

Degree program requirement changes

- Change credit hours required for FSCD 1333 from 3 to 2 (1332) and for FSCD 2572 from 2 to 3 (2573).
- Add FSCD 1322 and FSCD 1412 to “Program Requirements.”
- Change credit hours required for “Program Requirements” from 28 to 32.
- Change credit hours required for “Support and Related Requirements” from 11 to 6.
- Add EDUC 1101 to “General Education” requirements.
- Change credit hours required for “General Education” from 23 to 24.
- The proposed changes update the curriculum to better serve students.
- The proposed changes will also better acclimate students to college and improve student retention and success.
- Two new courses will be added and no courses will be deleted.
- Total credit hours for the degree will not change.
- No new funds are requested from the State Regents.

RSC – Associate in Arts in Social Sciences (112)

Degree program requirement changes

- For the “General” option:
 - Add EDUC 1101 as a required course in “General Education.”
 - Change credit hours required for “General Education” from 33 to 34.

- Change credit hours required for “Support and Related Requirements” from 11 to 10.
- For the “Women’s Studies” option:
 - Add EDUC 1101 as a required course in “General Education.”
 - Change credit hours required for “General Education Electives” from 5-7 to 4-6.
 - Change credit hours required for “General Education from 36 to 38.
- The proposed changes are being implemented in an effort to better acclimate students to college and improve retention and success.
- No new courses will be added and no courses will be deleted.
- Total credit hours for the degree will not change.
- No new funds are requested from the State Regents.

TCC – Certificate in Child Development (206)

Degree program option deletion

- Delete option “Head Start Credential.”
- There are currently no students enrolled in the option.
- One course will be deleted from the inventory.
- No funds are available for reallocation as they are offered for other options within the certificate.
- The proposed deletion is the result of changes in the requirements for teacher assistants which can be met through other certificate options.
- No new funds are requested from the State Regents.

TCC – Associate in Applied Science in Child Development (200)

Degree program requirement changes

- For the “Middle Childhood” option:
 - Remove CHLD 2333 from “Child Development” courses.
 - Change credit hours required for “Child Development” courses from 24 to 21.
 - Add CSCI 1203.
- For the “Infant/Toddler” option:
 - Remove CHLD 2523 and CHLD 2543 from “Child Development” courses and add CHLD 2233 and CHLD 2243.
- The proposed changes replace a course that is no longer offered and provides students with broader content knowledge.
- No new courses will be added and two courses will be deleted.
- Total credit hours for the degree will not change.
- No new funds are requested from the State Regents.

Meeting of the
OKLAHOMA STATE REGENTS FOR HIGHER EDUCATION
June 27, 2013

AGENDA ITEM #20-a (2):

Programs.

SUBJECT: Approval of institutional requests for degree program inventory reconciliations.

RECOMMENDATION:

It is recommended that the State Regents approve requests for degree program inventory reconciliations for state system institutions, as described below.

BACKGROUND:

The University of Oklahoma Health Sciences Center (OUHSC) requests option deletions for the Professional Master of Science in Nursing (027) and an option addition to the Professional Post Master Certificate in Nursing (068) to reconcile institutional practice with the official degree program inventory.

POLICY ISSUES:

These actions are consistent with the State Regents' Academic Program Approval policy.

ANALYSIS:

OUHSC requests option deletions for the Professional Master of Science in Nursing (027). An option addition request was approved at the June 30, 2005 State Regents' meeting to add "Nurse Practitioner." Upon review staff noted that in addition to the "Nurse Practitioner" option, "Nurse Practitioner-Adult" and "Nurse Practitioner-Neonatal" were also added. During a recent program modification request OUHSC staff noted that "Nurse Practitioner-Adult" and "Nurse Practitioner-Neonatal" are specialties within the "Nurse Practitioner" option and are not stand-alone options and should be removed from the inventory. This action will correct this error.

OUHSC requests to add "Family Nurse Practitioner" as option for the Post Master's Certificate in Nursing (068). This certificate program was approved in 1997 and has been offering the "Family Nurse Practitioner" option since the implementation of the program. During a recent program modification request staff noted that "Family Nurse Practitioner" was not listed in the inventory as an approved option. This action will correct this error.

Meeting of the
OKLAHOMA STATE REGENTS FOR HIGHER EDUCATION
June 27, 2013

AGENDA ITEM #20-b:

Capital.

SUBJECT: Ratification of Capital Allotments for FY2013.

RECOMMENDATION:

It is recommended that the State Regents ratify the capital allotments made during the period of May 9, 2013, through June 6, 2013.

BACKGROUND:

The Chancellor has been authorized by the State Regents to approve routine changes and allot funds for capital projects subject to ratification at the next scheduled meeting. A listing summarizing allotments for the period May 9, 2013, through June 6, 2013, is attached. This listing is provided to the Regents for ratification.

POLICY ISSUES:

State Regents' Delegation of Authority Policy (2.8) authorizes the Chancellor to approve routine changes to capital projects and to allot funds for capital projects.

ANALYSIS:

The attached listing includes allotments made from State Funds, Section 13/New College Funds and Section 13 Offset Funds. The total amount of capital allotments made for this period is \$8,165,993 representing \$6,444,586 in State funding and \$1,721,407 in Section 13/New College Funds.

ALLOTMENT OF FUNDS FOR CAPITAL PROJECTS						
(For the Period of May 8, 2013, through June 6,2013)						
Section 13, New College, and State Funding Sources						
Institution	Source of Funds	Project Name	Date Allotted	Section 13/New College Amounts	State Fund	Totals by Institution
Oklahoma State University	295-State	General Campus Repair, Maintenance and Remodel	5/29/2013		613,039	
		Total		0	613,039	613,039
Oklahoma State University - CHS	295-State	General Campus Repair & Remodel	5/29/2013		460,000	
		Total		0	460,000	460,000
Northeastern State University	600-Section 13	Academic Building Renovations	5/28/2013	372,000		
	650-New College	Academic Building Renovations	5/28/2013	1,298,000		
		Total		1,670,000	0	1,670,000
Northwestern Repair & Renovation	295-State	Major Repair & Renovation	5/23/2013		49,000	
		Total		0	49,000	49,000
Rogers State University	295-State	Student Dining Facility	5/16/2013		1,000,000	
		Total		0	1,000,000	1,000,000
Southwestern Oklahoma State University	295-State	Event Center	5/16/2103		3,000,000	
		Total		0	3,000,000	3,000,000
Northern OK College	650-New College	Repair Educational Facility	5/9/2013		20,000	
	650-New College	Computer Software & Licenses	5/9/2013		15,000	
	650-New College	Instructional Equipment & Furniture	5/9/2013		40,000	
	650-New College	Computers & Networking	5/9/2013		45,000	
	650-New College	Campus Dining Facilities	5/13/2013		10,000	
	650-New College	Physical Plant Equipment	5/13/2013		25,000	
	650-New College	Computer Software & Licenses	5/13/2013		20,000	
	650-New College	Instructional Equipment & Furniture	5/13/2013		10,000	
	650-New College	Computers & Networking	5/13/2013		20,000	
		Total		0	205,000	205,000
Northeastern OK A&M College	295-State	Real Estate Purchases	5/24/2013		130,000	
		Wireless Upgrade in Dorms	5/24/2013		100,000	
		Total		0	230,000	230,000
Oklahoma City Community College	295-State	Visual and Performing Art Center Phase II (Theater)	5/13/2013		887,547	
		Total		0	887,547	887,547
Redlands Community College	295-State	Motor Pool Purchase & Upgrade	5/10/2013	51,407		
		Total		51,407	0	51,407
		System Totals		1,721,407	6,444,586	8,165,993

Meeting of the
OKLAHOMA STATE REGENTS FOR HIGHER EDUCATION
June 27, 2013

AGENDA ITEM #20-c (1):

Agency Operations.

SUBJECT: Ratification of Purchases.

RECOMMENDATION:

It is recommended that the State Regents ratify purchases in amounts in excess of \$25,000 but not in excess of \$100,000 between May 3, 2013 and May 31, 2013.

BACKGROUND:

Agency purchases are presented for State Regents' action. They relate to previous board action and the approved agency budgets.

POLICY ISSUES:

The recommended action is consistent with the State Regents' purchasing policy which provides for the Budget Committee's review of purchases in excess of \$25,000.

ANALYSIS:

For the time period between May 3, 2013 and May 31, 2013, there is four (4) purchases in excess of \$25,000 but not in excess of \$100,000.

Purchases Between \$25,000.00 and \$99,999.99.

College Access

- 1) Hyatt Regency Tulsa in the amount of \$41,249.85 in federal funds for College Access Challenge Grant Program to hold their annual Summer Institute. This Summer Institute is for new and experienced counselors from across the state with poverty rates greater than the 16% Oklahoma average. The Summer Institute will be held June 24-27, 2013. (Funded from 430-CACGP).

OneNet

- 2) Chickasaw Telecom Incorporated in the amount of \$33,528.80 for equipment to provide additional 10 Gigabit Ethernet connectivity for Oklahoma City-Edmond-Langston fiber path. Funded from 718-OneNet).
- 3) DPS Telecom in the amount of \$59,796.80 in federal funds for the Oklahoma Community Anchor Network (OCAN) facility monitoring cameras. This is part of the security project for OCAN. (Funded from 718-47440).

- 4) IBM in the amount of \$70,074.00 for the expansion of the Tulsa Data Storage the expansion includes a total of 48 more disks drives in two shelves. The result of this expansion will increase the storage capacity in Tulsa. (Funded from 718-OneNet).

Meeting of the
OKLAHOMA STATE REGENTS FOR HIGHER EDUCATION
June 27, 2013

AGENDA ITEM #20-c (2):

Agency Operations.

SUBJECT: Contract with Attorney General.

RECOMMENDATION:

It is recommended that the State Regents authorize the Chancellor to enter into a renewal contract (attached) for legal services with the Office of the Attorney General for Fiscal Year 2014.

BACKGROUND:

Since September 2001, the State Regents have contracted with the Office of the Attorney General for legal services. The contract has been renewed annually thereafter. Upon the departure of Assistant Attorney General Lisa Davis to become General Counsel to Governor Brad Henry, the contract was modified (and approved by the State Regents on February 13, 2004) to substitute the half-time services of an AAG assigned by the Office of the Attorney General. From 2004 to 2010, the Office of the Attorney General assigned AAG Gretchen Harris. Ms. Harris retired in 2010. From 2010 until May, 2013, the Office of the Attorney General assigned AAG Regina Switzer, a former Associate General Counsel for the State Regents who was familiar with the agency and the Oklahoma State System of Higher Education. She left the Office of the Attorney General in May, 2013 to take a position with Oklahoma City Community College. The Office of the Attorney General is now in the process of selecting a replacement to be the assigned AAG.

POLICY ISSUES:

Contracts for legal services between the Office of the Attorney General and certain named agencies, specifically including the State Regents, are authorized by 74 O.S. 2001, § 181 as amended. This is a renewal of an existing contract.

ANALYSIS:

The contract provides considerable value to the State Regents and to the State System.

- The contract provides a strong connection with the Office of the Attorney General, current information about its thinking on a variety of legal issues, and links to its advice to other agencies on issues of common concern.
- The contract has enabled the State Regents to provide legal services support to the Quartz Mountain Arts and Conference Center and Nature Park, and to small institutions that do not have ready access to legal services. This is consistent with the State Regents' preventive law philosophy.

The annual cost of the contract is \$60,985.68 annually, and will be billed at \$5,082.14 per month. This includes the assigned AAG's salary, benefits, and non-salary costs incurred in connection with the provision of legal services pursuant to the contract. The annual cost of the contract for FY 2013 was \$54,065.64. A copy of the proposed contract is attached. The contract provides that the assigned AAG, if requested by the State Regents, shall provide quarterly reports to the State Regents setting forth the time expended and the work performed by that AAG. The Legal Department will continue to request such quarterly reports. The contract also provides that the State Regents, acting through the Chancellor or his designee, reserve the right to determine the scope of the assigned AAG's activities on behalf of the State Regents. The Chancellor will direct that the assigned AAG not include within the scope of the activities any matters pertaining to the University Center of Southern Oklahoma (f/k/a Ardmore Higher Education Program) or the Office of Accountability. The contract also provides that it may be terminated by either party upon 60 days written notice. Approval of the contract is recommended.

**CONTRACT FOR LEGAL SERVICES
FISCAL YEAR 2014**

1. PARTIES:

This Agreement is between the Office of Attorney General and the Oklahoma State Regents for Higher Education ("OSRHE"), and the authorized signatures below bind the parties to the terms set out hereafter.

2. AUTHORITY:

This Agreement is authorized by virtue of 74 O.S. 2011, § 18*l*.

3. CONTRACT DURATION:

This Agreement commences July 1, 2013, and covers fiscal year 2014 ending June 30, 2014.

4. CONSIDERATION:

(a) The Attorney General's Office ("AGO") shall provide the legal services of the Assigned Attorney for and on behalf of OSRHE during the contract period, in exchange for payment in the amount of \$60,985.68 annually, with monthly payments in the amount of \$5,082.14. This sum is comprised of the salary and benefits of the Assigned Attorney and non-salary costs incurred in connection with the provision of legal services pursuant to this contract. The OSRHE will be billed monthly for the monthly amount set forth above. Should the OSRHE desire that the Assigned Attorney have additional training, any costs associated with such training shall be paid by the OSRHE. The OSRHE shall reimburse the Assigned Attorney pursuant to the Travel Reimbursement Act for travel undertaken by the Assigned Attorney on behalf of OSRHE.

(b) The scope of legal services to be provided by the Assigned Attorney includes matters pertaining to the OSRHE's official duties, particularly including representation in legal proceedings, provision of legal advice and assistance, appearance at meetings as necessary and other legal needs, consistent with the provisions of Paragraph 6.

(c) The Assigned Attorney, if requested by the OSRHE at the beginning of the contract period, shall provide quarterly reports to the OSRHE setting forth the work performed by the Assigned Attorney. These reports shall be furnished by October 15, January 15, April 15 and July 15.

(d) It is explicitly recognized, however, that the consideration paid herein by the OSRHE is in the nature of a retainer that enables the AGO to employ and ensure the availability of the Assigned Attorney one-half (50%) time for the OSRHE regardless of whether the Assigned Attorney are in fact utilized. It is agreed by the parties that the Assigned Attorney's obligation to provide legal services to the OSRHE will be fulfilled by the availability of the Assigned Attorney for the purposes provided for in this Agreement, regardless of the number of hours actually used by the OSRHE.

5. OFFICE LOCATION:

The Assigned Attorney will maintain an office with the AGO, to facilitate the delivery of legal services.

6. SUPERVISION:

The Assigned Attorney will be expected to coordinate his/her activities on behalf of the OSRHE with the OSRHE General Counsel. The OSRHE, acting through the Chancellor and his designee, reserve the right to determine the scope of the Assigned Attorney's activities on their behalf. However, the supervision of the Assigned Attorney and his/her work product, and its consistency with AGO policies, shall remain the prerogative of the AGO.

7. TERMINATION:

This agreement may be terminated by either party upon 60 days written notice.

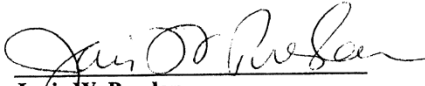
8. AGENCY DESIGNEES:

The authorized agent and designee for the Office of Attorney General is Janis W. Preslar. The authorized agent and designee for the OSRHE is Glen D. Johnson.

**OKLAHOMA STATE REGENTS
FOR HIGHER EDUCATION**

OFFICE OF THE ATTORNEY GENERAL

By: _____
Glen D. Johnson
Chancellor

By: 
Janis W. Preslar
Assistant Attorney General
Chief, General Counsel Section

DATE: _____

DATE: June 6, 2013

Meeting of the
OKLAHOMA STATE REGENTS FOR HIGHER EDUCATION
June 27, 2013

AGENDA ITEM #20-c (3):

Agency Operations.

SUBJECT: Approval of technical amendments to agency retirement plan.

RECOMMENDATION:

It is recommended that the State Regents approve technical amendments to an agency retirement plan made necessary by changes in applicable federal tax laws and regulations, and as a result of recent routine periodic review by the Internal Revenue Service.

BACKGROUND:

The State Regents have several tax-qualified retirement plans for agency employees. As federal tax laws and regulations change, and as a result of routine periodic review by the Internal Revenue Service, the plan documents for these retirement plans are amended from time-to-time in order for the retirement plans to maintain their tax-qualified status. Outside tax counsel has advised that one retirement plan document must be amended at this time in order to make changes in the language of the plan that have been requested by the Internal Revenue Service as a result of a recent routine periodic review. Outside tax counsel has also advised that the amendments are technical only, and do not affect the funding of the plan nor the amount of benefits available under the plan.

POLICY ISSUES:

This action is consistent with State Regents' policy.

ANALYSIS:

On the advice of outside tax counsel, it is recommended that the attached technical amendments be approved, so that the agency's retirement plan can maintain its tax-qualified status.

**2013 FIRST AMENDMENT TO THE SUPPLEMENTAL RETIREMENT PLAN
FOR OKLAHOMA STATE REGENTS FOR HIGHER EDUCATION**

Pursuant to the authority vested in the undersigned, the Supplemental Retirement Plan for Oklahoma State Regents for Higher Education (the "Plan") is hereby amended as follows:

I.

Section 5.7(f)(i) of the Plan is hereby amended to read as follows:

"(i) Designated Beneficiary. The individual who is designated as the beneficiary under Section 6.4 of the Plan and is the designated beneficiary under Section 401(a)(9) of the Internal Revenue Code and Section 1.401(a)(9)-4, of the Treasury regulations."

II.

Section 7.1(a) of the Plan is hereby amended to read as follows:

"(a) The Annual Benefit otherwise payable to the Participant at any time will not exceed the Maximum Permissible Amount as defined in Section 7.2(f). If the benefit the Participant would otherwise accrue in a Limitation Year would produce an Annual Benefit in excess of the Maximum Permissible Amount, the rate of accrual under this Plan will be reduced so that the Annual Benefit will equal the Maximum Permissible Amount. The benefit earned by the Participant in this Plan for each applicable Limitation Year will never exceed the limits of Code Section 415(b)."

III.

Section 10.1 of the Plan is hereby amended to read as follows:

"10.1 Right to Amend or Terminate Plan. The Plan may be amended or terminated by OSRHE. Upon termination of the Plan or complete discontinuance of contributions under the Plan, the rights of all employees to benefits accrued to the date of such termination or discontinuance, to the extent then funded, or the amounts credited to the employees' accounts, are non-forfeitable."

IV.

Section 10.2(d) of the Plan is hereby amended to read as follows:

"(d) 'Eligible Rollover Distribution': An 'Eligible Rollover Distribution' is any distribution of all or any portion of the balance to the credit of the Distributee, except that an Eligible Rollover Eligible Rollover Distribution does not include: any distribution that is one of a series of substantially equal periodic payments (not less frequently than annually) made for the life (or life expectancy) of the Distributee or the joint lives (or joint life expectancies) of the

Distributee and the Distributee's Eligible Spouse, or for a specified period of 10 years or more; any distribution to the extent such distribution is required under Section 401(a)(9) of the Code; and the portion of any distribution that is not includable in gross income (determined without regard to the exclusion for net unrealized appreciation with respect to Employer Stock). Effective for all distributions occurring on or after January 1, 2000, an Eligible Rollover Distribution described in Code Section 401(c)(4), which the Participant can elect to roll over to another plan pursuant to Code Section 401(a)(31), excludes hardship withdrawals."

Except as otherwise provided in this 2013 First Amendment to the Supplemental Retirement Plan for Oklahoma State Regents for Higher Education ("Amendment"), the Plan is hereby ratified and confirmed in all respects. This Amendment shall be effective as of July 1, 2012.

EXECUTED as of the ____ day of _____, 2013.

OKLAHOMA STATE REGENTS FOR HIGHER
EDUCATION

By: _____
Name: _____
Title: _____

Meeting of the
OKLAHOMA STATE REGENTS FOR HIGHER EDUCATION
June 27, 2013

AGENDA ITEM #20-d:

Resolution.

This item will be available at the meeting.

Meeting of the
OKLAHOMA STATE REGENTS FOR HIGHER EDUCATION
June 27, 2013

AGENDA ITEM #21-a:

Programs.

SUBJECT: Current Status Report on Program Requests.

RECOMMENDATION:

This item is for information only.

BACKGROUND:

The Status Report on Program Requests tracks the status of all program requests received since July 1, 2012 as well as requests pending from the previous year.

POLICY ISSUES:

This report lists requests regarding degree programs as required by the State Regents' Academic Program Approval policy.

ANALYSIS:

The Status Report on Program Requests lists all program requests received by the State Regents and program actions taken by the State Regents within the current academic year (2012-2013).

The current status report contains the Current Degree Program Inventory and the following schedules:

1. Letters of Intent
2. Degree Program Requests Under Review
3. Approved New Program Requests
4. Requested Degree Program Deletions
5. Approved Degree Program Deletions
6. Requested Degree Program Name Changes
7. Approved Degree Program Name Changes
8. Requested Degree Designation Changes
9. Approved Degree Designation Changes
10. Cooperative Agreements
11. Suspended Programs
12. Reinstated Programs
13. Inventory Reconciliations
14. Net Reduction Table

Supplement available upon request.

Meeting of the
OKLAHOMA STATE REGENTS FOR HIGHER EDUCATION
June 27, 2013

AGENDA ITEM #21-b (1):

Annual Reports.

SUBJECT: Teacher Education Program Admission Study.

RECOMMENDATION:

This item is for information only.

BACKGROUND:

In response to the legislature in 1985, the State Regents selected the Pre-Professional Skills Test (PPST) as one criterion for admission to teacher education programs. The test has been required since 1990, initially of all students. In September 1997, a general education teacher certification test was added as a licensing requirement by the legislature. In May 2002, this Oklahoma General Education Test (OGET) was added to the admission criteria.

Currently, the admission criteria are 1) earning a GPA of 3.00 or higher in all liberal arts and sciences courses (a minimum of 20 hours), 2) passing all three sections of the PPST, 3) passing the OGET, or 4) holding a baccalaureate degree from an accredited university in the United States.

This is the thirteenth study of teacher education program admission since the policy was implemented in 1990. This report focuses on the period of time from 2002-03 to 2011-12, the most recent data available.

POLICY ISSUES:

The State Regents' Criteria for Admission to Teacher Education policy (3.21.3) regulates admission standards to teacher education programs and requires a review of data to evaluate its impact.

FINDINGS:

During 2011-12, the twelve Oklahoma public universities with teacher education programs reported a total of 1,616 students were admitted to teacher education programs (Chart 1). The number of students admitted decreased 33.1 percent from 2,417 in 2002-03 to 1,616 in 2011-12.

Most of the students admitted were White (71.8 percent). The next largest ethnic group, Native Americans, comprised 10.9 percent of admissions, a decrease of 13.3 percent from 2010-11 (Chart 2). Males comprised 19.5 percent of admissions with females making up 78.6 percent. Gender was unknown for 1.9 percent of admissions (Chart 3).

In 2011-12, 87.6 percent of the students were admitted to teacher education programs by passing the OGET, 11.5 percent by achieving a GPA of 3.00 or higher, and 0.9 percent had at least a bachelor's degree (Chart 4). The OGET was not used as an admission criterion until 2002-03.

An analysis of 2011-12 OGET test-takers by the Oklahoma Commission for Teacher Preparation shows that over half (66.6 percent) are getting their initial license/certification and 23.1 percent an alternative certification (Chart 5). In 2010-11, 64.0 percent of OGET test-takers were getting their initial license/certification and 23.5 percent an alternative certification.

CONCLUSIONS:

- Admissions to teacher education programs have decreased 5.0 percent from 1,701 in 2010-11 to 1,616 in 2011-12.
- Male admissions continue to decline from a high of 529 in 2002-03 to 315 in 2011-12.
- Black admissions have decreased by 19.6 percent from 46 in 2010-11 to 37 in 2011-12.
- Minority admissions have mostly decreased over 2011-12 with gains only found in Hispanic and Asian student admissions.
- Due to the importance of good preparation, students should continue to be advised to pass courses in the general education core curriculum before taking the OGET or PPST. Students are provided with remediation if needed. The subject matter competency course requirements in English, math, sciences, and social studies for early childhood, elementary, and special education students should continue to increase the general academic preparation of many teacher education students.

RECOMMENDATIONS:

1. Phase out the use of PPST as an admission option. Only three students were admitted through PPST in the previous two years, with none having been admitted in the 2011-12 academic year.
2. Continue to monitor the effects of alternative certification on teacher education admissions.
3. Increase emphasis on minority teacher recruitment to meet the demands of changing student demographics.

CHART 1
NUMBER OF STUDENTS ADMITTED TO TEACHER EDUCATION PROGRAMS AT PUBLIC UNIVERSITIES
2002-03 TO 2011-12

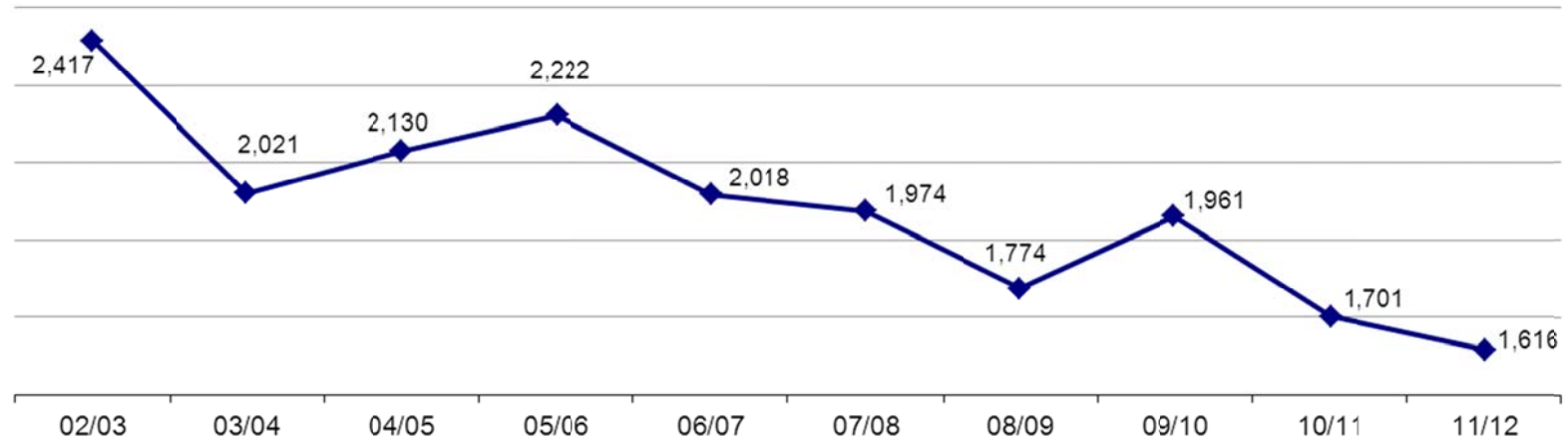


CHART 2
 NUMBER OF STUDENTS ADMITTED TO TEACHER EDUCATION PROGRAMS BY ETHNIC GROUP
 2002-03 TO 2011-12

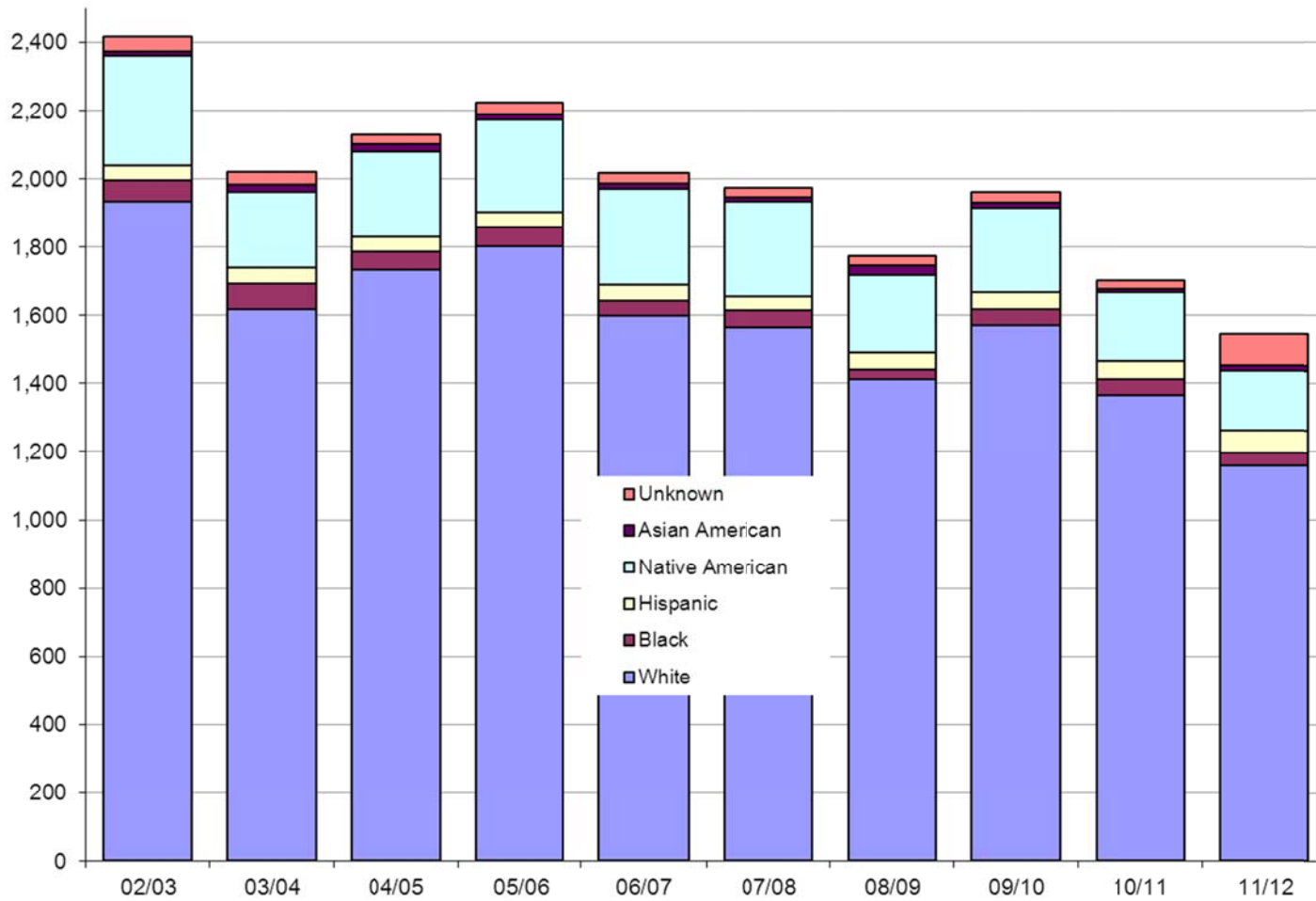


CHART 3
 NUMBER OF STUDENTS ADMITTED TO TEACHER EDUCATION PROGRAMS BY GENDER
 2002-03 TO 2011-12

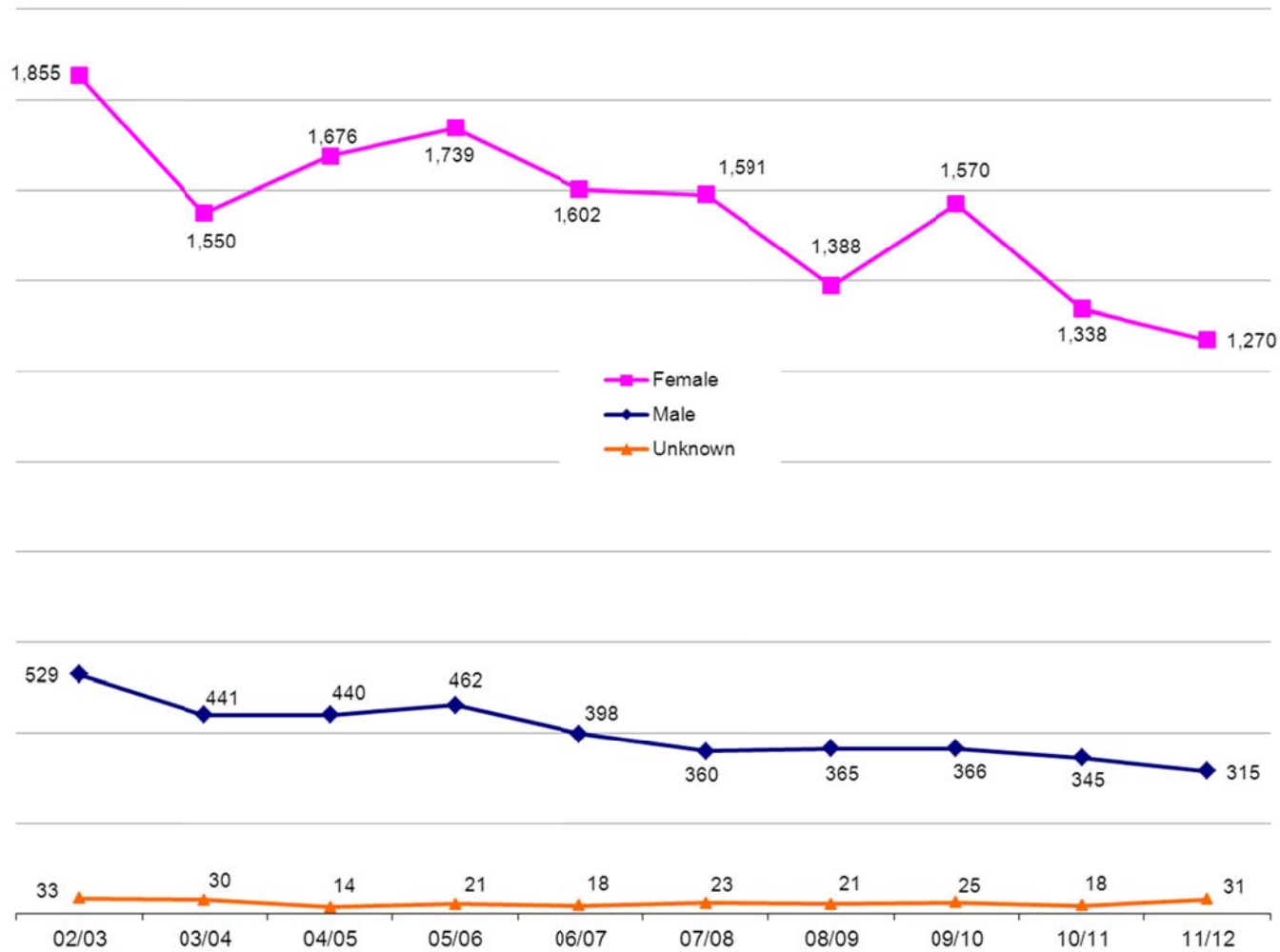


CHART 4
 NUMBER OF STUDENTS ADMITTED TO TEACHER EDUCATION PROGRAMS BY ADMISSION CRITERION
 2005-06 TO 2011-12

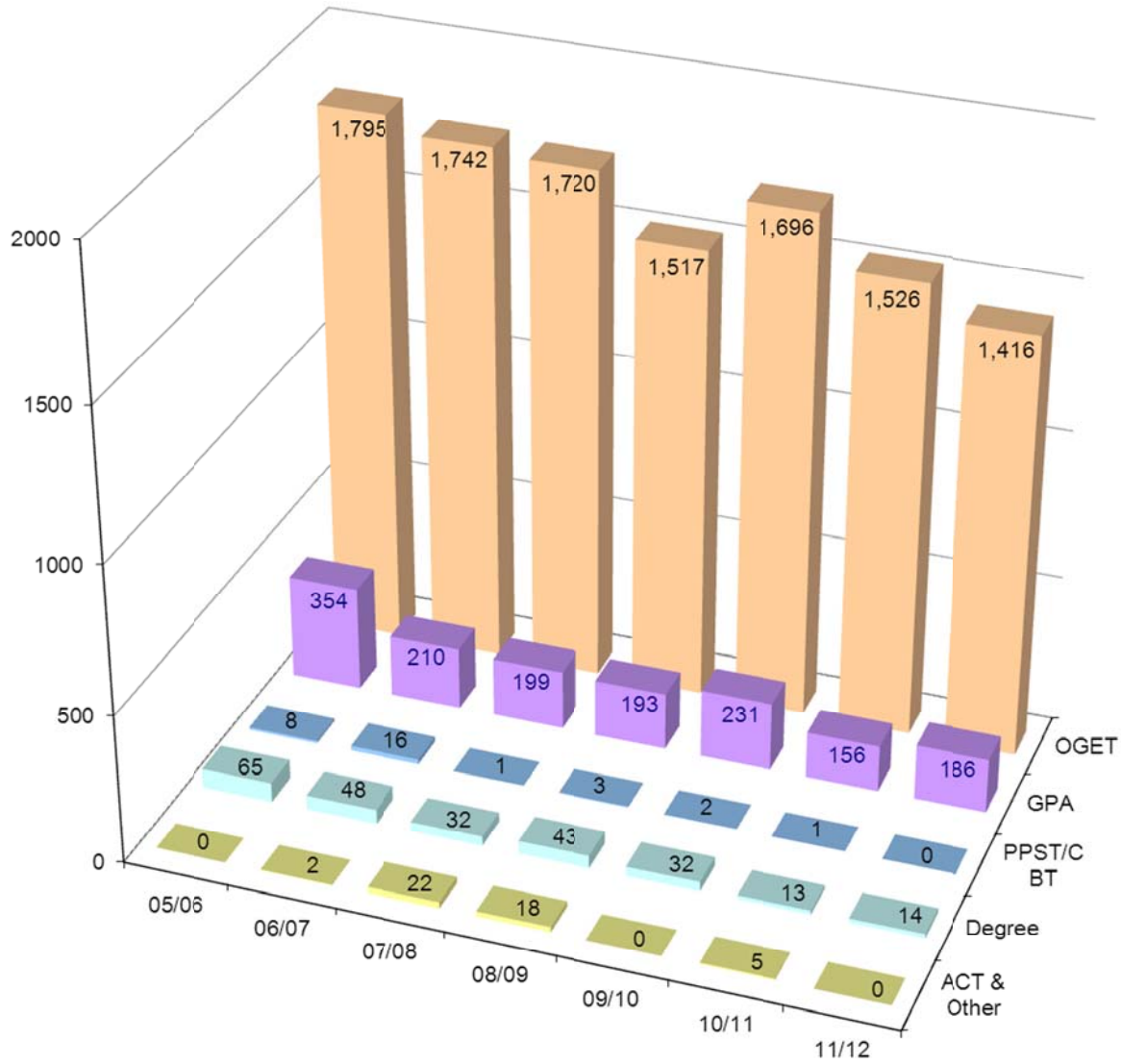
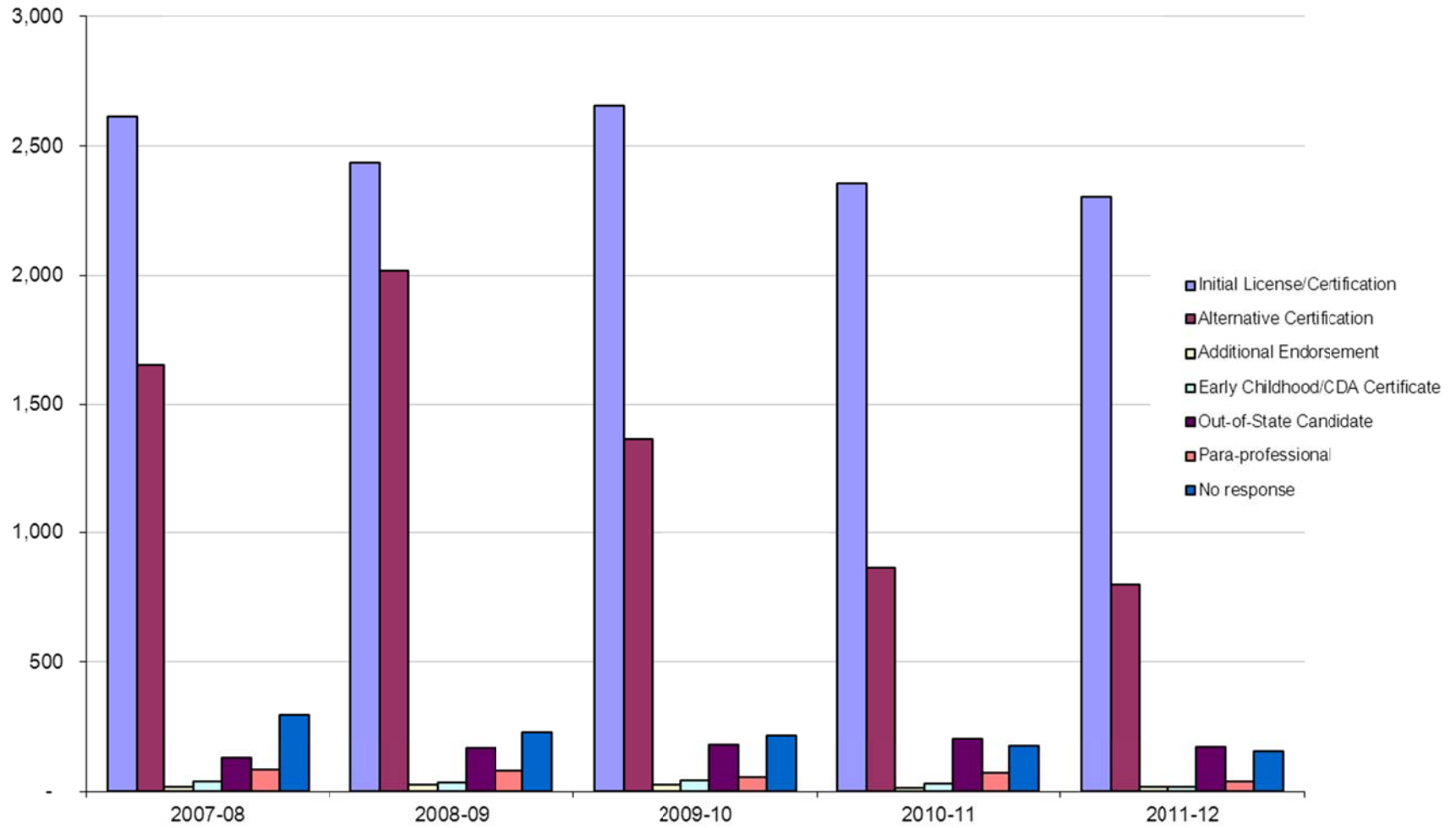


CHART 5
 OGET TEST TAKERS BY ROUTE TO CERTIFICATION
 2007-08 TO 2011-12



Meeting of the
OKLAHOMA STATE REGENTS FOR HIGHER EDUCATION
June 27, 2013

AGENDA ITEM #21-b (2) (a):

Annual Reports.

SUBJECT: Oklahoma High School Indicators Project Report: High School to College-Going Rates for Oklahoma High School Graduates Attending Oklahoma Colleges.

RECOMMENDATION:

It is recommended that the State Regents accept the report of the High School Indicators Project.

BACKGROUND:

In Senate Bill No. 183 from the 1989 legislative session, Section 13 set up a program designed to evaluate the performance of individual schools and school districts in the state of Oklahoma. This program not only required multiple types of evaluation by the State Department of Education, but also required that the individual schools and districts be notified of these evaluations, and that the general public also be advised as to the "effectiveness" of individual schools or districts. In response to the directive of SB 183, the State Regents provide the following four reports; (1) High School to College-Going Rates for Oklahoma High School Graduates to Oklahoma Colleges; (2) Headcount, Semester Hours, and GPA Report; (3) Mean ACT Scores by Oklahoma High School Site; and (4) Remediation Rates for Oklahoma High School Graduates in Oklahoma Public Higher Education (beginning in 1995).

POLICY ISSUES:

These reports are consistent with States Regents' policy.

ANALYSIS:

High School to College-Going Rates for Oklahoma High School Graduates to Oklahoma Colleges

The data describes 2011 Oklahoma high school graduates who entered an Oklahoma college or university as first-time entering freshmen in fall 2011. It lists the following information by county, district, and high school site: (1) the number of high school graduates; (2) the number of high school graduates who went directly to college the following academic year (linear college-going rate); and (3) the number of high school graduates who delay entry into college for one year or more.

For 2011, the State Department of Education reported 38,968 students graduated from Oklahoma high schools. Of that amount 20,482 or 52.6 percent entered an Oklahoma college or university the following academic year. This is 2.1 percentage points lower than the previous year.

In compliance with Senate Bill No. 183, the State Regents will transmit these data to the Office of Accountability.

Meeting of the
OKLAHOMA STATE REGENTS FOR HIGHER EDUCATION
June 27, 2013

AGENDA ITEM #21-b (2) (b):

Annual Reports.

SUBJECT: Oklahoma High School Indicators Project Report: Headcount, Semester Hours, and GPA Report.

RECOMMENDATION:

It is recommended that the State Regents accept the report of the High School Indicators Project.

BACKGROUND:

In Senate Bill No. 183 from the 1989 legislative session, Section 13 set up a program designed to evaluate the performance of individual schools and school districts in the state of Oklahoma. This program not only required multiple types of evaluation by the State Department of Education, but also required that the individual schools and districts be notified of these evaluations, and that the general public also be advised as to the "effectiveness" of individual schools or districts. In response to the directive of SB 183, the State Regents provide the following four reports; (1) High School to College-Going Rates for Oklahoma High School Graduates to Oklahoma Colleges; (2) Headcount, Semester Hours, and GPA Report; (3) Mean ACT Scores by Oklahoma High School Site; and (4) Remediation Rates for Oklahoma High School Graduates in Oklahoma Public Higher Education (beginning in 1995).

POLICY ISSUES:

These reports are consistent with States Regents' policy.

ANALYSIS:

The headcount, semester hour, and grade point average (GPA) summary provides academic year headcount, semester hour, and cumulative GPA information for 2011 high school graduates as fall 2011 first-time entering college freshmen in Oklahoma public institutions. The headcount and semester hour data are distributed by GPA ranges (0.0-1.6, 1.7-1.9, 2.0-2.9, 3.0+) numerically and by percent within each range.

Of the fall 2011 first-time freshmen (16,086), 60.3 percent (9,707) maintained a 3.0 or better GPA. More that 90 percent maintained at least a 2.0 higher during their first year in college.

Beginning in 2008, changes in reporting requirements to federal and regional entities necessitated updates to the Unitized Data System (UDS), the statewide data collection process. As a result, new procedures had to be developed to continue to provide quality data to the various education stakeholders. Therefore, comparisons of current findings to prior year reports are limited.

In compliance with Senate Bill No. 183, the State Regents will transmit these data to the Office of Accountability.

OKLAHOMA STATE REGENTS FOR HIGHER EDUCATION
655 Research Parkway, Oklahoma City

MINUTES

Seven Hundred Fiftieth Meeting



May 31, 2013

OKLAHOMA STATE REGENTS FOR HIGHER EDUCATION
655 Research Parkway, Oklahoma City, Oklahoma

Minutes of the Seven Hundred Fiftieth Meeting
May 31, 2013

CONTENTS

	Page
Announcement of filing of meeting and posting of the agenda.....	19323
Call to order.....	19323
Minutes of the previous meetings.....	19323
Reports.....	19323
State Regents	19324
Student Advisory Board	19324
E&G allocation.....	19324
Tuition and fee guidelines	19324
Policy.....	19325
Contracts and purchases	19325
Item deleted	19325
New programs	19325
Program deletions.....	19326
Academic policy.....	19327
Scholars for Excellence in Child Care.....	19327
Temporary Assistance to Needy Families	19327
Oklahoma Tuition Aid Grant.....	19328
Commendations.....	19328
Executive Session	19328
Consent Docket	19328
Reports.....	19329
Report of the committees.....	19330
New business	19330
Announcement of next regular meeting.....	19330
Adjournment.....	19330

OKLAHOMA STATE REGENTS FOR HIGHER EDUCATION
Research Park, Oklahoma City

**Minutes of the Seven Hundred Fiftieth Meeting
of the
Oklahoma State Regents for Higher Education
May 31, 2013**

1. **ANNOUNCEMENT OF FILING OF MEETING NOTICE AND POSTING OF THE AGENDA IN ACCORDANCE WITH THE OPEN MEETING ACT.** The Oklahoma State Regents for Higher Education held their regular meeting at 9 a.m. on Friday, May 31, 2013, at the State Regents' offices in Oklahoma City, Oklahoma. Notice of the meeting had been filed with the Secretary of State on November 6, 2012. A copy of the agenda for the meeting had been posted in accordance with the Open Meeting Act.
2. **CALL TO ORDER.** Regent Glass called the meeting to order and presided. Present for the meeting were State Regents Toney Stricklin, Jody Parker, Ike Glass, Jimmy Harrel, Mike Turpen, and John Massey.
3. **MINUTES OF THE PREVIOUS MEETINGS.** Regent Massey made a motion, seconded by Regent Harrel, to approve the minutes of the State Regents' Committee-of-the-Whole and the minutes of the State Regents' regular meeting on April 17, 2013, and April 18, 2013. Voting for the motion were Regents Parker, Glass, Harrel, Turpen, Massey, and Stricklin. Voting against the motion were none.
4. **REPORTS.**
 - a. Report of the Chairman. Chairman Glass acknowledged incoming Regents Jay Helm and Ann Holloway and stated that he looked forward to working with them over the next several years.
 - b. Report of the Chancellor. Chancellor Glen D. Johnson provided Regents with a summary of engagements that he attended on behalf of the State Regents and advised Regents of several upcoming events. Chancellor Johnson expressed appreciation to the Governor and Legislature for their work on several pieces of legislation over the past legislative session.

5. **STATE REGENTS.** Chairman Glass introduced Oklahoma Supreme Court Chief Justice Steven W. Taylor, who was present to administer the oaths of office. Chief Justice Taylor administered the oaths of office to Regent Jay Helm, who was appointed to a nine-year term by Governor Mary Fallin, and Regent Ann Holloway, who was appointed to complete the final three years of a nine-year term left by the resignation of Regent Julie Carson. All Regents congratulated Regents Helm and Holloway.
6. **STUDENT ADVISORY BOARD (SAB).**
 - a. Chief Justice Tylor administered the oath of office to incoming members of the Student Advisory Board. Members of the Student Advisory Board are elected to serve a one-year term by delegates to the Oklahoma Student Government Association at their annual meeting.
 - b. Ms. Debbie Turlip, Student Relations Liaison for the State Regents, provided Regents with an overview of the Student Advisory Board annual report and recommendations. Recommendations included increasing on-campus services for mental health and substance abuse treatment, continuing to oppose handguns or other similar weapons on public higher education campuses, maintaining Oklahoma's Complete College America initiative as a top priority, supporting state and institutional services for student military veterans, and maintain the Oklahoma's Promise program in its current form. A copy of the report and recommendations is on file at the State Regents' office.
7. **E&G ALLOCATION.** Regent Parker made a motion, seconded by Regent Turpen, to approve the allocation of FY2014 state appropriations to colleges, universities, constituent agencies, centers, Regents' operations and other special programs and to approve the Budget Principles and Guidelines for FY2014. Voting for the motion were Regents Holloway, Glass, Harrel, Turpen, Massey, Stricklin, Helm, and Parker. Voting against the motion were none.
8. **TUITION AND FEE GUIDELINES.** Regent Parker made a motion, seconded by Regent Massey, to approve FY2014 Tuition and Fee Approval Guidelines for dissemination to state

system presidents and governing boards. Voting for the motion were Regents Glass, Harrel, Turpen, Massey, Stricklin, Helm, Parker, and Holloway. Voting against the motion were none.

9. POLICY. Chairman Glass stated that the amendments to Chapter 4 of the State Regents' Policy and Procedures Manual, *Budget and Fiscal Affairs Policy*, was for posting only. No State Regents' action was required or taken.

10. CONTRACTS AND PURCHASES. Regent Parker made a motion, seconded by Regent Massey, to approve the following purchases for amounts in excess of \$100,000:

- Presbyterian Health Foundation in the amount of \$771,564.00 for the second year of a ten-year lease for the office space occupied by the Oklahoma State Regents for Higher Education at 655 Research Parkway in Oklahoma City.
- Ellucian Company LP in the amount of \$117,685.00 for maintenance to provide telephone support and upgrades to the agency accounting and human resources software, Banner.
- University of Missouri in the amount of \$223,000.00 for membership and Internet2 connectivity for the University of Oklahoma, Oklahoma State University-Tulsa, and the Oklahoma State Regents for Higher Education.
- US Postmaster in the amount of \$170,045.00 for annual postage meter expenses for the State Regents for FY2014.
- Presbyterian Health Foundation in the amount of \$226,890.00 for office space leased for the Oklahoma College Assistance Program at 840 Research Parkway.
- Mercer in the amount of \$360,000.00 for investment consulting.

Voting for the motion were Regents Harrel, Turpen, Massey, Stricklin, Helm, Parker, Holloway, and Glass. Voting against the motion were none.

11. ITEM DELETED.

12. NEW PROGRAMS.

- a. Regent Stricklin made a motion, seconded by Regent Parker, to approve the request from Northwestern Oklahoma State University to offer the Certificate in Entrepreneurial Studies, the Certificate in Personal Finance, the Certificate in Accounting, and the Certificate in Human Resources Management. Voting for the motion were Regents Turpen, Massey, Stricklin, Helm, Parker, Holloway, Glass, and Harrel. Voting against the motion were none.
- b. Regent Stricklin made a motion, seconded by Regent Parker, to approve the request from the University of Oklahoma College of Law to offer the Master of Legal Studies in Legal Studies, the Graduate Certificate in Energy Law, the Graduate Certificate in American Indian Law, the Graduate Certificate in Natural Resource Law, and the Graduate Certificate in Law and Entrepreneurship. Dean Joseph Harroz, Jr. was present to answer questions regarding the above requests. He noted that the graduate certificates would provide students with a documented proficiency in a specialization that can be used to enhance their marketability following graduation. Voting for the motion were Regents Massey, Stricklin, Helm, Parker, Holloway, Glass, Harrel, and Turpen. Voting against the motion were none.

13. PROGRAM DELETIONS. Regent Stricklin made a motion, seconded by Regent Massey, to approve the following institutional requests for program deletions:

- ◆ Oklahoma State University requested to delete the Master of Architecture in Architecture and the Master of Architectural Engineering in Architectural Engineering.
- ◆ The University of Central Oklahoma requested to delete the Bachelor of Arts in Mass Communications.
- ◆ Northern Oklahoma College requested to delete the Associate in Applied Science in Industrial Technology and the Associate in Applied Science in Biotechnology.

Voting for the motion were Regents Stricklin, Helm, Parker, Holloway, Glass, Harrel, Turpen, and Massey. Voting against the motion were none.

14. ACADEMIC POLICY. Chairman Glass announced that the revisions to the *In-State/Out-of-State Status of Enrolled Students* policy were for posting only. No State Regents' action was required or taken.

15. SCHOLARS FOR EXCELLENCE IN CHILD CARE.

a. Regent Stricklin made a motion, seconded by Regent Massey, to approve contract modifications between the Oklahoma Department of Human Services and the Oklahoma State Regents for Higher Education to continue the Scholars for Excellence in Child Care program. Voting for the motion were Regents Helm, Parker, Holloway, Glass, Harrel, Turpen, Massey, and Stricklin. Voting against the motion were none.

b. Regent Stricklin made a motion, seconded by Regent Massey, to approve the allocation of funds to Oklahoma community colleges participating in the Scholars for Excellence in Child Care Program pursuant to the contract with the Oklahoma Department of Human Services. Voting for the motion were Regents Parker, Holloway, Glass, Harrel, Turpen, Massey, Stricklin, and Helm. Voting against the motion were none.

16. TEMPORARY ASSISTANCE TO NEEDY FAMILIES (TANF).

a. Regent Stricklin made a motion, seconded by Regent Harrel, to approve modifications to the contracts between the Oklahoma State Regents for Higher Education and the Oklahoma Department of Human Services relating to the Temporary Assistance to Needy Families program. Voting for the motion were Regents Holloway, Glass, Harrel, Turpen, Massey, Stricklin, Helm, and Parker. Voting against the motion were none.

b. Regent Stricklin made a motion, seconded by Regent Harrel, to approve the allocation of funds to Oklahoma community colleges participating in the Temporary Assistance to Needy Families (TANF) program pursuant to the contracts with the Oklahoma Department of Human Services. Voting for the motion were Regents Glass, Harrel, Turpen, Massey, Stricklin, Helm, Parker, and Holloway. Voting against the motion were none.

- 17. OKLAHOMA TUITION AID GRANT (OTAG).** Regent Parker asked if the award had changed since the inception of the program in 1971. Mr. Bryce Fair, Associate Vice Chancellor for Scholarship and Grants, responded that the award level was raised in 1982 to the current \$1,000 award, which at the time covered a full tuition payment. Regents discussed the amount of funds that would be needed if the program were returned to fully funding tuition costs. Chancellor Johnson noted that, with the current amount of funding and award level, just over half of eligible students will receive the grant. Regent Massey asked about the total funding needed to be able to provide awards to all eligible students at the current award level. Mr. Fair responded that the total needed to achieve 100 percent funding at the current award level would be approximately \$50 million. Regent Stricklin made a motion, seconded by Regent Turpen, to approve the proposed 2013-2014 award schedule for the Oklahoma Tuition Aid Grant program. Voting for the motion were Regents Harrel, Turpen, Massey, Stricklin, Helm, Parker, Holloway, and Glass. Voting against the motion were none.
- 18. COMMENDATIONS.** Regent Massey made a motion, seconded by Regent Harrel, to commend staff for state and national recognitions. Voting for the motion were Regents Turpen, Massey, Stricklin, Helm, Parker, Holloway, Glass, and Harrel, Voting against the motion were none. Chairman Glass and Chancellor Johnson provided special commendations to State Regents' staff Valerie Autry, who recently graduated with a Bachelor's in Human Resource Management from the University of Central Oklahoma, and Ellen Marquardt, who recently graduated with a Master's in Psychology from the University of Central Oklahoma. Regents congratulated the graduates.
- 19. EXECUTIVE SESSION.** Mr. Bob Anthony, General Counsel for the Oklahoma State Regents for Higher Education, advised Regents that there was not a need to go into executive session.
- 20. CONSENT DOCKET.** Regent Harrel made a motion, seconded by Regent Massey, to approve the following consent docket items.

 - a. Programs.

- (1) Approval of institutional requests for program modifications.
- (2) Approval of institutional requests for program suspensions.
- b. Electronic Media. Approval of a request from Rose State College to offer the existing Associate in Applied Science in Networking/Cyber Security via distance delivery.
- c. ACT. Approval of the 2013-2014 ACT agreement.
- d. Capital. Ratification of capital allotments.
- e. Supplemental Allocations. Ratification of institutional budget revisions.
- f. Agency Operations. Ratification of purchases in excess of \$25,000.
- g. Non-Academic Degrees.
 - (1) Ratification of a posthumous degree request from Northwestern Oklahoma State University.
 - (2) Ratification of posthumous degree requests from the University of Oklahoma.

Voting for the motion were Regents Massey, Stricklin, Helm, Parker, Holloway, Glass, Harrel, and Turpen. Voting against the motion were none.

21. REPORTS. Regent Turpen made a motion, seconded by Regent Stricklin, to approve the following reports:

- a. Programs. Status report on program requests.
- b. Annual Reports.
 - (1) Low Producing Programs Report
 - (2) 2012-2013 Chiropractic Education Assistance Program Year End Report
 - (3) 2012-2013 Future Teachers Scholarship Program Year End Report
 - (4) 2012-2013 William P. Willis Scholarship Year End Report
 - (5) 2012-2013 George and Donna Nigh Scholarship Year End Report
 - (6) Academic Policy Exceptions Quarterly Report
 - (7) Annual Student Assessment Report
 - (8) Teacher Education Annual Report on System Wide Review

- (9) National Guard Tuition Waiver 2012-2013 Year-End Report and Institutional Reimbursement
- (10) High School Indicators Report on Annual Student Remediation Rates
- (11) 2011-2012 Annual College Student Remediation Report/Developmental Education Report

Voting for the motion were Regents Stricklin, Helm, Parker, Holloway, Glass, Harrel, Turpen, and Massey. Voting against the motion were none.

22. REPORT OF THE COMMITTEES.

- a. Academic Affairs and Social Justice and Student Services Committees. The Academic Affairs and Social Justice and Student Services Committees had no additional action items.
- b. Budget and Audit Committee. The Budget and Audit Committee had no additional items for Regents' action.
- c. Strategic Planning and Personnel and Technology Committee. The Strategic Planning and Personnel and Technology Committee had no action items.
- d. Investment Committee. The Investment Committee had no items for Regents' action.

23. NEW BUSINESS. No new business was brought before the Regents.

24. ANNOUNCEMENT OF NEXT REGULAR MEETING. Regent Glass announced that the State Regents' next regular meetings would be held on Wednesday, June 26, 2013 at 9 a.m. and Thursday, June 27, 2013, at 9 a.m. at the State Regents offices in Oklahoma City, Oklahoma.

25. ADJOURNMENT. With no additional items to address, the meeting was adjourned.

ATTEST:

Ike Glass, Chairman

Michael C. Turpen, Secretary

OKLAHOMA STATE REGENTS FOR HIGHER EDUCATION

Research Park, Oklahoma City

MINUTES OF THE COMMITTEE-OF-THE-WHOLE

Thursday, May 30, 2013

- 1. ANNOUNCEMENT OF FILING OF MEETING NOTICE AND POSTING OF THE AGENDA IN ACCORDANCE WITH THE OPEN MEETING ACT.** The Committee-of-the-Whole met at 10:30 a.m. on Thursday, May 30, 2013, in the Regents Conference Room at the State Regents' offices in Oklahoma City, Oklahoma. Notice of the meeting was filed with the Secretary of State on November 6, 2012. A copy of the agenda had been posted as required by the Open Meeting Act.
- 2. CALL TO ORDER.** Participating in the meeting were Regents Toney Stricklin, Ron White, Jody Parker, Ike Glass, Jimmy Harrel, Mike Turpen, and John Massey. Regent Designate Jay Helm was also present. Regent Glass called the meeting to order and presided.
- 3. EXECUTIVE SESSION.** Regent Parker made a motion, seconded by Regent Turpen, to go into executive session for confidential communications between a public body and its attorneys concerning pending investigations, claims or actions. Voting for the motion were Regents Parker, Glass, Harrel, Turpen, Massey, and Stricklin. Voting against the motion were none. Regent White was not present for the vote.

Following executive session discussions, Regents returned to open session.

Immediately following the presentation of item 10—Best of Higher Education report, Regent Stricklin made a motion, seconded by Regent Parker, to return to executive session. Voting for the motion were Regents Glass, Massey, Stricklin, White, and Parker. Voting against the motion were none. Regents Harrel and Turpen were not present for the vote.

Following executive session discussions, Regents returned to open session.

- 4. FY2014 HIGHER EDUCATION BUDGET.** Ms. Amanda Paliotta, Vice Chancellor for Budget and Finance, Information Technology, Telecommunications, and OneNet, provided Regents with an overview of the higher education appropriation for FY2014. She also provided Regents with background information regarding the request of \$23 million for debt service payments. Chancellor Johnson noted that the FY2014 appropriation was approximately \$9.3 million more than the additional debt service request, which will not meet the increases in mandatory costs of State System institutions. Regent Parker asked if the \$9.3 million would be considered new money and therefore subject to the State Regents' performance based funding formula. Vice Chancellor Paliotta responded that it would.

Vice Chancellor Paliotta provided Regents with a proposed schedule of institutional allocations for FY2014. She also noted that the appropriation for the Office of Accountability was made through the higher education budget appropriation and that those funds would be taken off the top prior to any institutional allocation. Vice Chancellor Paliotta also reminded Regents that the University of Oklahoma and Oklahoma State University Tulsa campuses were not included in the formula and would instead be funded through the main campus appropriations.

Regents also discussed potential use of FY2013 carryover funds, which totaled approximately \$2.5 million. Programs discussed were concurrent enrollment, summer academies, Oklahoma Tuition Aid Grant (OTAG) and Oklahoma Tuition Equalization Grant (OTEG), academic scholars, Reach Higher scholarships, Quartz Mountain, and the University of Science and Arts of Oklahoma (USAO) Mission Enhancement Plan (MEP). Chancellor Glen D. Johnson presented recommendations to allocate \$200,000 in one-time funds to USAO for their Mission Enhancement Plan and \$200,000 in one-time funds to Quartz Mountain for accounts payable.

5. **TUITION AND FEE GUIDELINES.** Regents reviewed the proposed tuition and fee guidelines that will be provided to State System institutions during their FY2014 budget preparations. Vice Chancellor Paliotta advised Regents that institutional budgets would be due by Wednesday, June 12, 2013. Chancellor Johnson advised Regents that State System institution presidents would provide their requests for tuition and fees at the State Regents' meeting on Wednesday, June 26, 2013.
6. **COMPLETE COLLEGE AMERICA.** Mr. Tony Hutchison, Vice Chancellor for Strategic Planning and Analysis and Economic and Workforce Development, Provided Regents with an update on the Complete College America initiative. He also provided Regents with an overview of institutional performance metrics that would be used in the State Regents' funding formula.
7. **REACH HIGHER.** Ms. Sheila Smith, Reach Higher Administrator, provided Regents with an update on the State Regents' adult degree completion program, Reach Higher. She noted that the program was available at 23 of Oklahoma's State System institutions and that the total number of graduates has increased from 167 to 714.
8. **LEGISLATIVE UPDATE.** Ms. Hollye Hunt, Associate Vice Chancellor for Legislative Relations, provided Regents with an overview of legislation from the 2013 legislative session.
9. **TASKFORCE REPORTS.**
 - a. Online Education Task Force. Chancellor Johnson advised Regents that the Online Education Task Force would not be meeting in May, due to the late scheduling of the task force subcommittees. Dr. Blake Sonobe, Vice Chancellor for Academic Affairs, stated that the subcommittees would meet jointly on Thursday, June 20, 2013.
 - b. Safety and Security Task Force. Chancellor Johnson advised Regents that the Campus Safety and Security Task Force would meet on Wednesday, June 5, 2013.
10. **"BEST OF HIGHER EDUCATION" REPORT.** Regents received the May 2013 update on institutional activities.
11. **ADJOURNMENT.** With no other items to discuss, the meeting was adjourned.

ATTEST:

Ike Glass, Chairman

Michael C. Turpen, Secretary