

**OKLAHOMA HIGH SCHOOL INDICATORS
PROJECT**

REMEDIATION RATES

**FOR OKLAHOMA
HIGH SCHOOL GRADUATES
IN OKLAHOMA PUBLIC HIGHER
EDUCATION**

OKLAHOMA STATE REGENTS FOR HIGHER EDUCATION
State Capitol Complex, Oklahoma City

March 2001

**OKLAHOMA STATE REGENTS
FOR HIGHER EDUCATION**

Leonard Eaton, Jr.
Chairman
Tulsa

Joe L. Mayer
Vice Chairman, Guymon

Joe E. Cappy
Tulsa

Carl Renfro
Secretary, Ponca City

Jimmy D. Harrel
Leedy

Marlin "Ike" Glass
Assistant Secretary, Newkirk

Cheryl P. Hunter
Edmond

Bill W. Burgess, Jr.
Lawton

John Massey
Durant

Hans Brisch
Chancellor

The Oklahoma State Regents for Higher Education in compliance with Titles VI and VII of the Civil Rights Act of 1964, Executive Order 11236 as amended, Title IX of the Education Amendments of 1972, Americans with Disabilities Act of 1990 and other federal laws do not discriminate on the basis of race, color, national origin, sex, age, religion, handicap, or status as a veteran in any of its policies, practices, or procedures. This includes but is not limited to admissions, employment, financial aid, and educational services.

This publication, duplicated by the State Regents= central services, is issued by the Oklahoma State Regents for Higher Education as authorized by 70 O.S. Supp. 1999, Section 3206. Copies have been prepared and distributed internally. Copies have been deposited with the Publications Clearinghouse of the Oklahoma Department of Libraries.

OKLAHOMA HIGH SCHOOL INDICATORS PROJECT

REMEDIATION RATES FOR OKLAHOMA HIGH SCHOOL GRADUATES IN OKLAHOMA PUBLIC HIGHER EDUCATION

BACKGROUND

This is the fourth annual report of the "Remediation Rates for Oklahoma High School Graduates in Oklahoma Higher Education" and is one of four reports in the High School Indicators Project. This project is part of the State Regents' cooperative effort with the State Department of Education to provide measures or indicators of educational performance on: (1) mean ACT scores, (2) college-going rates, (3) college credit hours and GPA, and (4) remediation rates. These reports are sent to Oklahoma high school superintendents, principals, and presidents of school boards to inform them of the level of preparedness of their students who go on to college.

The data used to construct this report come from the Unitized Data System (UDS) of the Oklahoma State Regents for Higher Education. The UDS consists of data from each higher education institution for each student every semester. Beginning in 1995, remediation data were added to the UDS.

Remediation activity is also reported in the *Annual Student Remediation Report*, which differs from this report. The focus of the *Annual Student Remediation Report* is on all remediation activity occurring at the colleges and universities; whereas, this report only includes students who graduated from Oklahoma high schools. Although graduates from Oklahoma high schools account for most of the freshmen in the State System, there may be small differences between the numbers in each report.

METHODOLOGY

This report describes recent Oklahoma high school graduates who entered an Oklahoma public college or university as new freshmen in fall 1999. Since it is not possible to track individual high school graduates to college, 1998-99 high school graduates are defined as 17-, 18-, or 19-years old who graduated from an Oklahoma high school. These students (16,625) are full- or part-time freshmen who entered college in fall 1999.

This study used the student-cohort flow system to track students by semester and examined the courses taken throughout the 1999-00 academic year. Students who took more than one remedial course in a subject area were counted only once in that subject. Students who took a remedial course in more than one subject area were counted once in each of subject area. For the total count, students were counted only once although they could have taken more than one remedial course; therefore, the total count is an unduplicated headcount of the first-time entering freshmen.

In the 1999-00 year, 6,012 freshmen from Oklahoma high schools enrolled in remedial courses; this represents 36.2 percent of the fall 1999 freshmen. As reported in the *Annual Student Remediation Report* (March, 2001), the number (6,767) and percent (36.3 percent) of all freshmen direct from high school who enrolled in remediation includes the Oklahoma high school graduates.

For high schools with five or fewer students, the freshman headcount has been entered, but no additional information has been provided in order to comply with the Federal Educational Rights and Privacy Act (FERPA). In this case, an asterisk has been entered next to the freshman headcount in lieu of counts or

percentages. Although all remedial coursework is included, some remediation has not been identified by subject area. Procedures are in place to improve the reporting of remediation by subject.

FORMAT OF REPORT

This report describes remediation rates for each high school, which are then grouped by county. The first column is the freshman headcount and the next four columns are the four subject areas of remedial courses: science, English, mathematics, and reading. Each of these four columns contains the count and percentage of the freshmen enrolled in at least one remedial course in that subject. The last column contains the unduplicated count and percentage, which means a student could have been remediated in more than one subject area, but would only be counted once in this column.

ANALYSIS

The county totals are shown as summaries after their respective high schools. Table 1 shows county data at a glance; Figures 1, 2, and 3 are maps of this information. Of the fall 1999 first-time freshmen, 36.5 percent enrolled in remedial courses in science, English, mathematics, or reading. Mathematics remediation had the highest rate with 31.5 percent of the first-time freshmen taking a remedial mathematics course. The next highest remediation rate was 14.1 percent in English, followed by 5.2 percent in reading, and 4.1 percent in science. These figures do not sum to the state total remediation rate because some students may have taken more than one remedial course, but are counted once in the state total.

A county comparison shows a range in the remediation rates from 10.5 in Cimmaron county to 68.4 percent in Harmon county. While 39 of the 77 counties have remediation rates less than the state average (36.5 percent), the other 38 counties have higher remediation rates than the state average.

A three-year comparison of the total unduplicated remediation rates by county for 1996-97 through 1998-99 Oklahoma high school graduates as 1997-98 through 1999-2000 freshmen in Oklahoma public higher education institutions is shown in Table 2. The statewide remediation rate has fluctuated from 37.3 percent in 1997-98 to 40.1 percent in 1998-99 back down to 36.5 percent in 1999-2000.

Tables and Figures

Table 1
REMEDIATION RATES FOR
1998-99 OKLAHOMA HIGH SCHOOL GRADUATES AS
FALL 1999 FRESHMEN IN OKLAHOMA PUBLIC HIGHER EDUCATION
BY COUNTY

County	Science	English	Math	Reading	Total Unduplicated
Adair	23.1%	24.6%	52.3%	16.9%	60.0%
Alfalfa	0.0%	6.5%	16.1%	6.5%	19.4%
Atoka	20.3%	27.5%	36.2%	18.8%	55.1%
Beaver	2.9%	5.9%	20.6%	5.9%	23.5%
Beckham	0.0%	7.3%	19.1%	7.3%	22.7%
Blaine	1.4%	4.2%	13.9%	1.4%	13.9%
Bryan	6.7%	10.0%	18.0%	4.7%	28.0%
Caddo	3.4%	12.0%	33.7%	2.3%	39.4%
Canadian	4.5%	9.0%	24.7%	2.9%	27.9%
Carter	4.9%	16.5%	32.9%	3.7%	39.1%
Cherokee	7.7%	21.4%	39.3%	10.3%	43.6%
Choctaw	8.3%	20.2%	22.6%	7.1%	36.9%
Cimarron	5.3%	10.5%	5.3%	0.0%	10.5%
Cleveland	1.2%	10.6%	33.7%	1.9%	36.6%
Coal	0.0%	15.6%	25.0%	0.0%	31.3%
Comanche	1.6%	18.3%	22.2%	7.4%	32.2%
Cotton	0.0%	24.3%	40.5%	8.1%	54.1%
Craig	3.5%	15.3%	35.3%	10.6%	48.2%
Creek	4.4%	12.9%	32.1%	4.1%	37.4%
Custer	0.0%	5.6%	17.8%	5.0%	21.7%
Delaware	10.1%	11.9%	47.7%	2.8%	49.5%
Dewey	8.9%	11.1%	17.8%	4.4%	28.9%
Ellis	3.3%	10.0%	10.0%	10.0%	16.7%
Garfield	0.6%	6.6%	19.7%	2.8%	21.9%
Garvin	6.0%	13.3%	36.0%	7.3%	44.7%
Grady	4.8%	7.9%	29.4%	1.6%	32.9%
Grant	0.0%	13.5%	26.9%	9.6%	32.7%
Greer	3.6%	14.3%	10.7%	0.0%	14.3%
Harmon	5.3%	36.8%	47.4%	0.0%	68.4%
Harper	0.0%	3.3%	13.3%	0.0%	13.3%
Haskell	7.2%	21.7%	34.8%	8.7%	37.7%
Hughes	4.5%	12.1%	40.9%	12.1%	45.5%
Jackson	7.9%	12.9%	32.4%	0.0%	35.3%
Jefferson	2.3%	7.0%	30.2%	2.3%	32.6%
Johnston	8.2%	26.2%	34.4%	4.9%	47.5%
Kay	2.3%	15.2%	30.9%	9.4%	32.8%
Kingfisher	3.3%	5.4%	22.8%	4.3%	26.1%
Kiowa	8.6%	12.9%	28.6%	5.7%	37.1%
Latimer	0.0%	19.4%	48.4%	11.3%	53.2%

continued on next page

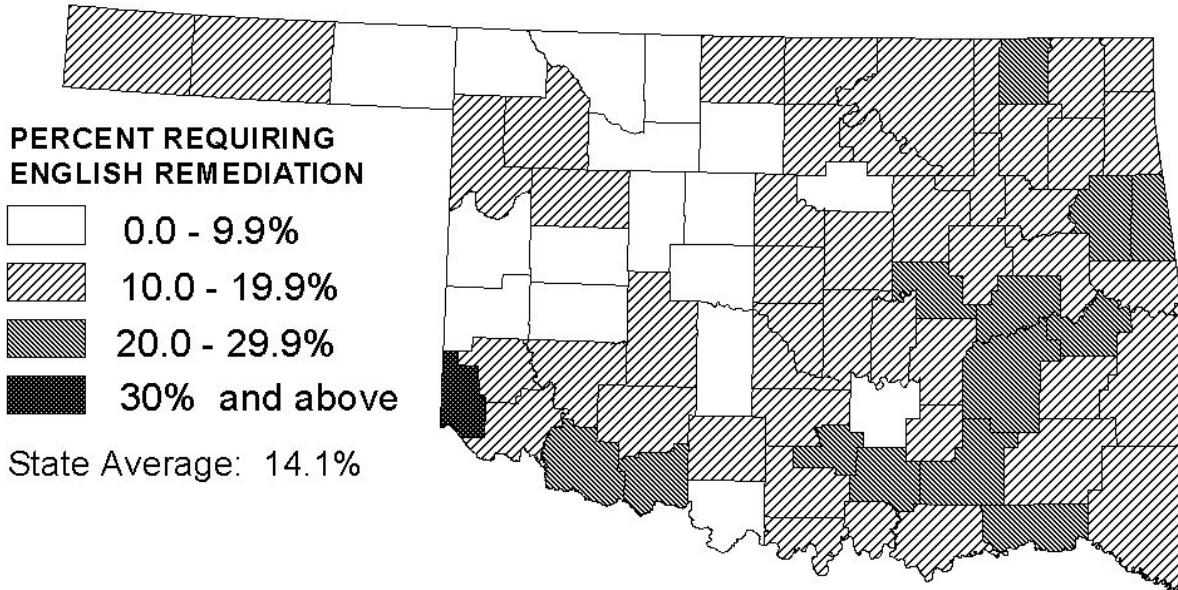
Table 1 (continued)
REMEDIATION RATES FOR
1998-99 OKLAHOMA HIGH SCHOOL GRADUATES AS
FALL 1999 FRESHMEN IN OKLAHOMA PUBLIC HIGHER EDUCATION
BY COUNTY

County	Science	English	Math	Reading	Total Unduplicated
Leflore	9.1%	15.0%	31.0%	1.6%	36.9%
Lincoln	2.4%	11.5%	29.1%	6.1%	30.9%
Logan	1.6%	12.1%	23.4%	4.0%	25.0%
Love	10.0%	16.7%	36.7%	3.3%	46.7%
Major	1.2%	4.9%	12.3%	0.0%	13.6%
Marshall	5.6%	14.8%	22.2%	3.7%	31.5%
Mayes	6.7%	12.7%	25.4%	13.4%	35.8%
McClain	1.2%	13.4%	35.5%	4.7%	40.1%
McCurtain	5.6%	10.6%	26.3%	5.0%	31.3%
McIntosh	20.9%	23.3%	43.0%	10.5%	51.2%
Murray	0.0%	22.2%	29.6%	7.4%	40.7%
Muskogee	12.8%	19.7%	39.0%	3.9%	42.0%
Noble	5.0%	17.5%	37.5%	8.8%	41.3%
Nowata	9.1%	27.3%	18.2%	22.7%	50.0%
Okfuskee	7.0%	26.3%	47.4%	10.5%	56.1%
Oklahoma	1.7%	15.4%	31.2%	3.1%	34.5%
Okmulgee	17.2%	17.2%	44.6%	13.7%	49.0%
Osage	8.6%	17.2%	45.2%	9.7%	51.6%
Ottawa	9.8%	15.2%	47.0%	1.5%	52.3%
Pawnee	3.4%	19.3%	29.5%	6.8%	35.2%
Payne	4.6%	7.3%	30.3%	5.0%	32.2%
Pittsburg	3.6%	20.0%	38.7%	11.6%	45.8%
Pontotoc	3.2%	7.4%	22.3%	8.5%	29.3%
Pottawatomie	2.5%	16.9%	44.0%	7.0%	48.9%
Pushmataha	3.2%	17.7%	27.4%	4.8%	37.1%
Roger Mills	0.0%	2.3%	15.9%	6.8%	18.2%
Rogers	8.5%	16.0%	29.9%	23.5%	46.3%
Seminole	4.2%	16.0%	38.7%	11.8%	40.3%
Sequoyah	3.8%	15.8%	28.6%	3.0%	36.1%
Stephens	1.7%	13.7%	26.1%	5.4%	31.5%
Texas	14.1%	15.3%	18.8%	5.9%	29.4%
Tillman	10.4%	20.8%	35.4%	2.1%	39.6%
Tulsa	2.9%	13.1%	33.0%	2.5%	37.0%
Wagoner	9.7%	17.7%	39.8%	1.8%	43.4%
Washington	4.0%	10.4%	21.4%	9.5%	28.4%
Washita	0.0%	2.7%	10.7%	1.3%	12.0%
Woods	2.4%	7.1%	11.9%	7.1%	19.0%
Woodward	1.7%	11.1%	20.5%	5.1%	27.4%
STATE TOTALS	4.1%	14.1%	31.5%	5.2%	36.5%

Figure 1

REMEDIATION RATES FOR 1998-99 OKLAHOMA HIGH SCHOOL GRADUATES AS FALL 1999 FRESHMEN IN OKLAHOMA PUBLIC HIGHER EDUCATION

ENGLISH



READING

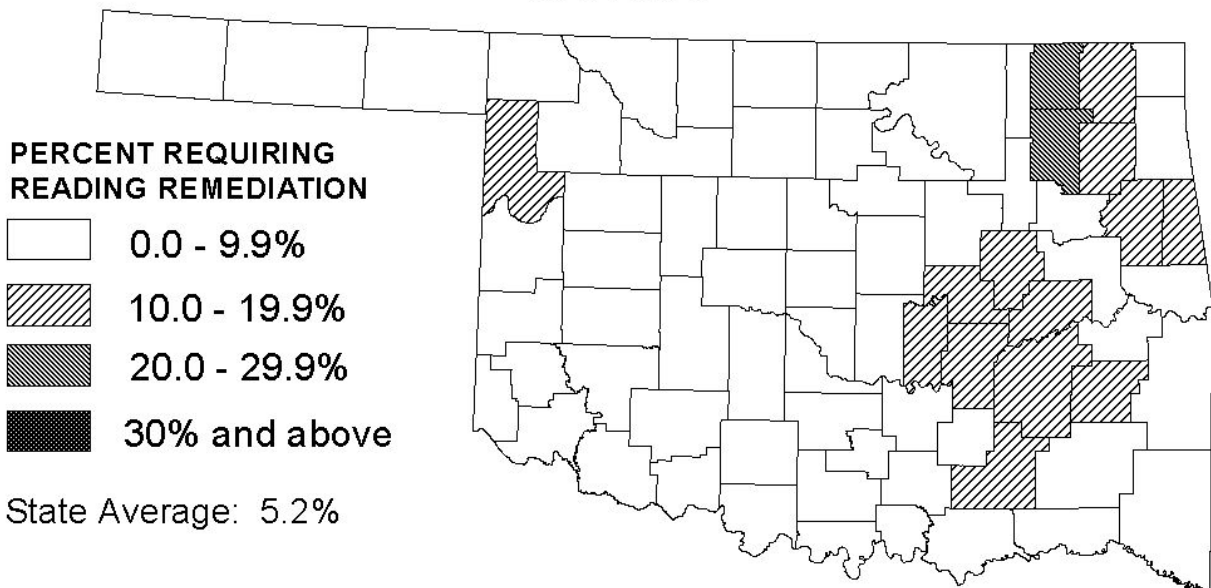
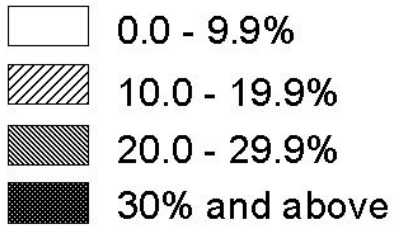


Figure 2

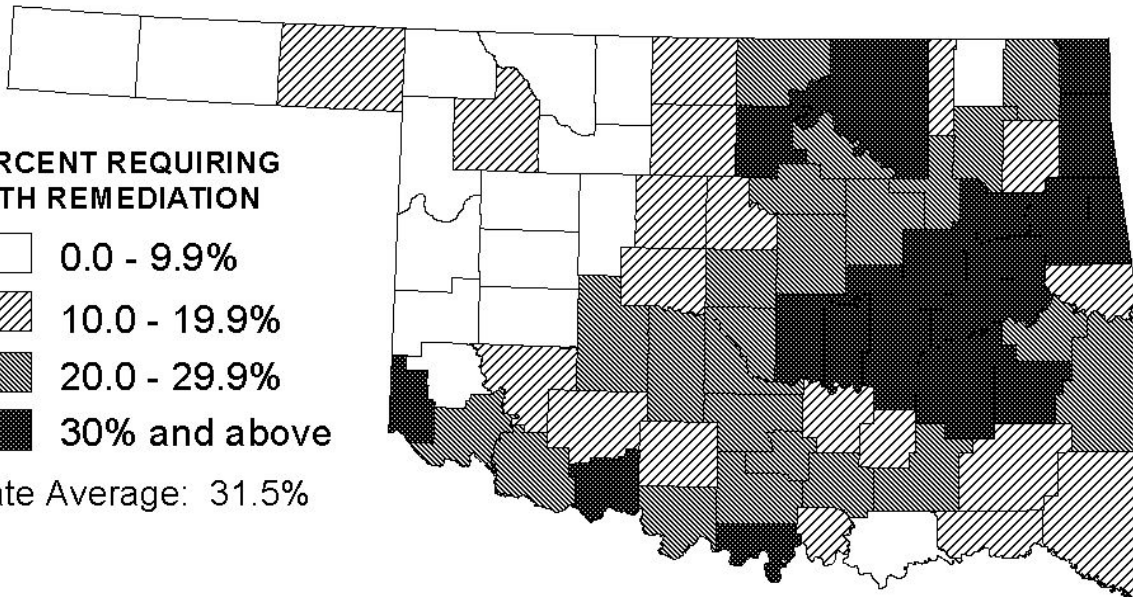
REMEDIATION RATES FOR 1998-99 OKLAHOMA HIGH SCHOOL GRADUATES AS FALL 1999 FRESHMEN IN OKLAHOMA PUBLIC HIGHER EDUCATION

MATH

PERCENT REQUIRING
MATH REMEDIATION

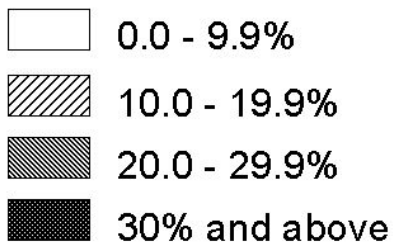


State Average: 31.5%

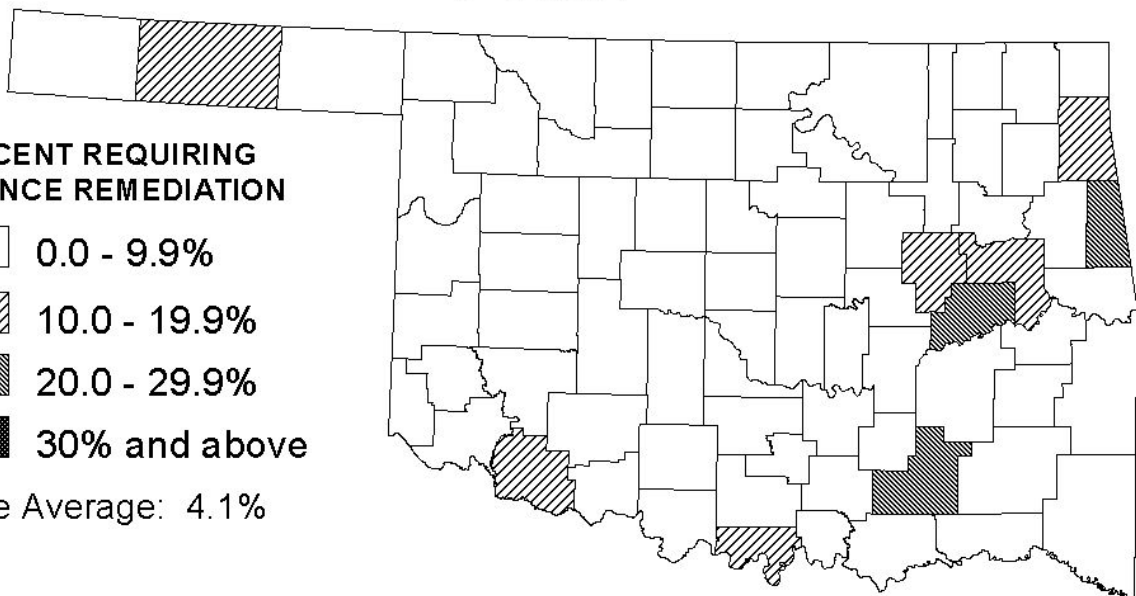


SCIENCE

PERCENT REQUIRING
SCIENCE REMEDIATION

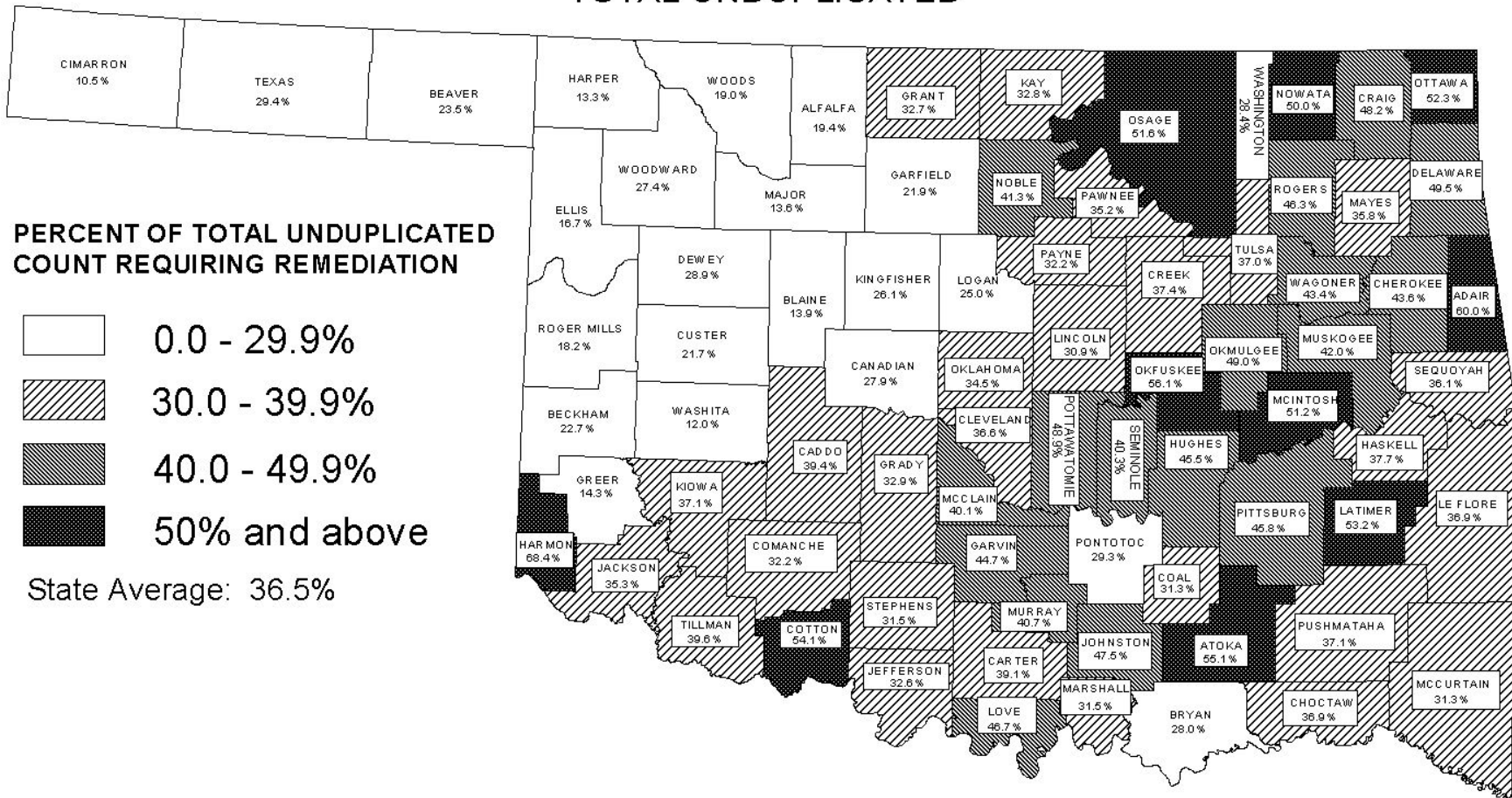


State Average: 4.1%



REMEDATION RATES FOR 1998-99 OKLAHOMA HIGH SCHOOL GRADUATES AS FALL 1999 FRESHMEN IN OKLAHOMA PUBLIC HIGHER EDUCATION

TOTAL UNDUPLICATED



(This page left blank intentionally)

Table 2
REMEDIATION RATES FOR
1996-97 THROUGH 1998-99 OKLAHOMA HIGH SCHOOL GRADUATES AS
1997-98 THROUGH 1999-00 FRESHMEN IN OKLAHOMA PUBLIC
HIGHER EDUCATION
BY COUNTY

County	Total Unduplicated		
	1997-98	1998-99	1999-00
Adair	43.3%	49.4%	60.0%
Alfalfa	28.9%	27.3%	19.4%
Atoka	47.8%	51.6%	55.1%
Beaver	38.2%	34.5%	23.5%
Beckham	26.1%	37.0%	22.7%
Blaine	31.3%	38.6%	13.9%
Bryan	30.5%	28.6%	28.0%
Caddo	42.6%	46.6%	39.4%
Canadian	29.5%	40.3%	27.9%
Carter	39.5%	43.6%	39.1%
Cherokee	45.9%	57.5%	43.6%
Choctaw	40.3%	37.9%	36.9%
Cimarron	36.4%	36.4%	10.5%
Cleveland	41.9%	42.0%	36.6%
Coal	37.5%	37.8%	31.3%
Comanche	40.3%	38.2%	32.2%
Cotton	53.1%	42.9%	54.1%
Craig	50.7%	42.4%	48.2%
Creek	23.9%	35.2%	37.4%
Custer	27.0%	17.2%	21.7%
Delaware	43.7%	46.9%	49.5%
Dewey	29.4%	24.3%	28.9%
Ellis	35.0%	35.7%	16.7%
Garfield	25.4%	27.6%	21.9%
Garvin	32.2%	41.9%	44.7%
Grady	38.6%	36.5%	32.9%
Grant	30.0%	42.2%	32.7%
Greer	44.4%	48.4%	14.3%
Harmon	55.6%	46.2%	68.4%
Harper	26.9%	19.5%	13.3%
Haskell	43.9%	35.2%	37.7%
Hughes	34.9%	37.3%	45.5%
Jackson	36.6%	47.2%	35.3%
Jefferson	64.3%	36.7%	32.6%
Johnston	46.7%	39.6%	47.5%
Kay	35.4%	38.2%	32.8%
Kingfisher	39.2%	25.9%	26.1%
Kiowa	31.1%	27.4%	37.1%
Latimer	47.1%	47.5%	53.2%

continued on next page

Table 2 (continued)
REMEDIATION RATES FOR
1996-97 THROUGH 1998-99 OKLAHOMA HIGH SCHOOL GRADUATES AS
1997-98 THROUGH 1999-00 FRESHMEN IN OKLAHOMA
HIGHER EDUCATION
BY COUNTY

County	Total Unduplicated		
	1997-98	1998-99	1999-00
Leflore	40.2%	41.6%	36.9%
Lincoln	38.1%	30.6%	30.9%
Logan	37.6%	34.2%	25.0%
Love	27.6%	29.4%	46.7%
Major	23.9%	30.4%	13.6%
Marshall	46.7%	45.8%	31.5%
Mayes	45.1%	48.5%	35.8%
McClain	42.6%	46.6%	40.1%
McCurtain	34.6%	33.6%	31.3%
McIntosh	59.6%	41.2%	51.2%
Murray	36.5%	33.3%	40.7%
Muskogee	43.6%	44.1%	42.0%
Noble	35.6%	24.2%	41.3%
Nowata	64.3%	52.6%	50.0%
Okfuskee	40.7%	48.6%	56.1%
Oklahoma	37.5%	41.0%	34.5%
Okmulgee	48.1%	43.9%	49.0%
Osage	41.1%	62.5%	51.6%
Ottawa	49.2%	50.4%	52.3%
Pawnee	55.6%	44.1%	35.2%
Payne	34.3%	36.6%	32.2%
Pittsburg	39.3%	44.6%	45.8%
Pontotoc	31.0%	27.1%	29.3%
Pottawatomie	40.1%	41.4%	48.9%
Pushmataha	37.7%	43.1%	37.1%
Roger Mills	31.0%	19.0%	18.2%
Rogers	31.6%	42.3%	46.3%
Seminole	40.8%	40.2%	40.3%
Sequoyah	35.5%	41.4%	36.1%
Stephens	36.9%	33.2%	31.5%
Texas	29.7%	24.7%	29.4%
Tillman	34.0%	56.9%	39.6%
Tulsa	34.1%	39.4%	37.0%
Wagoner	46.6%	42.3%	43.4%
Washington	26.3%	36.6%	28.4%
Washita	24.4%	22.6%	12.0%
Woods	35.4%	22.0%	19.0%
Woodward	29.3%	32.8%	27.4%
STATE TOTALS	37.3%	40.1%	36.5%

OKLAHOMA STATE REGENTS FOR HIGHER EDUCATION

REMEDIATION REPORT

**1998-99 OKLAHOMA HIGH SCHOOL GRADUATES AS FALL 1999 COLLEGE FRESHMEN
IN PUBLIC HIGHER EDUCATION**

PUBLIC TOTAL (SITE/COUNTY REPORT)

ACT H.S. CODE / SITE	OKLA. H.S. GRADUATES AS FRESHMAN HEADCOUNT	SCIENCE		ENGLISH		MATH.		READING		UNDUPLICATED REMEDIATION TOTAL	
		N	%	N	%	N	%	N	%	N	%
COUNTY: ADAIR											
373820 WATTS HS	N 1*										
	%										
373890 WESTVILLE HS	N 22	2		4		8		4		11	
	%		9.1		18.2		36.4		18.2		50.0
373390 STILWELL HS	N 39	12		11		25		6		26	
	%		30.8		28.2		64.1		15.4		66.7
373385 CAVE SPGS HS	N 1*										
	%										
371922 COOKSON HILLS CHRISTIAN SC	N 2*										
	%										
ADAIR COUNTY TOTAL	N 65	15		16		34		11		39	
	%		23.1		24.6		52.3		16.9		60.0
COUNTY: ALFALFA											
370505 BURLINGTON HS	N 3*										
	%										
370705 CHEROKEE HS	N 13					3				3	
	%						23.1				23.1
371665 TIMBERLAKE HS	N 15			2		2		2		3	
	%				13.3		13.3		13.3		20.0
ALFALFA COUNTY TOTAL	N 31			2		5		2		6	
	%				6.5		16.1		6.5		19.4
COUNTY: ATOKA											
373410 STRINGTOWN HS	N 11	2		3		6		1		9	
	%		18.2		27.3		54.5		9.1		81.8
370225 ATOKA HS	N 35	8		10		7		5		13	
	%		22.9		28.6		20.0		14.3		37.1
373655 TUSHKA HS	N 4*										
	%										
370575 CANEY HS	N 19	4		6		11		7		15	
	%		21.1		31.6		57.9		36.8		78.9
ATOKA COUNTY TOTAL	N 69	14		19		25		13		38	
	%		20.3		27.5		36.2		18.8		55.1
COUNTY: BEAVER											
370285 BEAVER HS	N 9					3				3	
	%						33.3				33.3
370255 BALKO HS	N 7			1		2		1		3	
	%				14.3		28.6		14.3		42.9
371330 FORGAN HS	N 3*										
	%										

*For freshman headcount cells of 5 or fewer, data will not be displayed to protect the privacy of individuals.

ACT H.S. CODE / SITE	OKLA. H.S. GRADUATES AS FRESHMAN HEADCOUNT	SCIENCE		ENGLISH		MATH.		READING		UNDUPLICATED REMEDIATION TOTAL	
		N	%	N	%	N	%	N	%	N	%
373650 TURPIN HS	N 15					1		1		1	
	%						6.7		6.7		6.7
BEAVER COUNTY TOTAL	N 34	1		2		7		2		8	
	%		2.9		5.9		20.6		5.9		23.5
COUNTY: BECKHAM											
371210 MERRITT HS	N 9			1		1		1		1	
	%				11.1		11.1		11.1		11.1
371200 ELK CY HS	N 62			5		10		6		14	
	%				8.1		16.1		9.7		22.6
373185 SAYRE HS	N 23					6				6	
	%						26.1				26.1
370630 CARTER HS	N 2*										
	%										
371255 ERICK HS	N 14			2		3		1		3	
	%				14.3		21.4		7.1		21.4
BECKHAM COUNTY TOTAL	N 110			8		21		8		25	
	%				7.3		19.1		7.3		22.7
COUNTY: BLAINE											
372615 OKEENE HS	N 16					1				1	
	%						6.3				6.3
373815 WATONGA HS	N 31	1		1		6				6	
	%		3.2		3.2		19.4				19.4
371435 GEARY HS	N 12			1		2				2	
	%				8.3		16.7				16.7
370580 CANTON HS	N 13			1		1		1		1	
	%				7.7		7.7		7.7		7.7
BLAINE COUNTY TOTAL	N 72	1		3		10		1		10	
	%		1.4		4.2		13.9		1.4		13.9
COUNTY: BRYAN											
371125 SILO HS	N 20	4		3		5		2		8	
	%		20.0		15.0		25.0		10.0		40.0
370390 ROCK CREEK HS	N 4*										
	%										
370000 ACHILLE HS	N 12			1		2		1		3	
	%				8.3		16.7		8.3		25.0
370845 COLBERT HS	N 15			3		3		1		6	
	%				20.0		20.0		6.7		40.0
370535 CADDO HS	N 4*										
	%										
370300 BENNINGTON HS	N 7	1				2		1		3	
	%		14.3				28.6		14.3		42.9
370545 CALERA HS	N 15	2		1		3				5	
	%		13.3		6.7		20.0				33.3
371127 DURANT HS	N 73	3		7		11		2		16	
	%		4.1		9.6		15.1		2.7		21.9
BRYAN COUNTY TOTAL	N 150	10		15		27		7		42	
	%		6.7		10.0		18.0		4.7		28.0

*For freshman headcount cells of 5 or fewer, data will not be displayed to protect the privacy of individuals.

ACT H.S. CODE / SITE COUNTY: CADDO	OKLA. H.S. GRADUATES AS FRESHMAN HEADCOUNT	SCIENCE		ENGLISH		MATH.		READING		UNDUPLICATED REMEDICATION TOTAL	
		N	%	N	%	N	%	N	%	N	%
371860 HYDRO HS	N 11			2		2				3	
	%				18.2		18.2				27.3
372150 LOOKEBA-SICKLES HS	N 7	2		1		2				3	
	%		28.6		14.3		28.6				42.9
370135 ANADARKO HS	N 57	2		7		27		2		29	
	%		3.5		12.3		47.4		3.5		50.9
370615 CARNEGIE HS	N 20			2		5				5	
	%				10.0		25.0				25.0
370153 APACHE HS	N 16			3		1		1		4	
	%				18.8		6.3		6.3		25.0
370980 CYRIL HS	N 12			1		3				3	
	%				8.3		25.0				25.0
371505 GRACEMONT HS	N 3*										
	%										
371160 EAKLY HS	N 5*										
	%										
370655 CEMENT HS	N 6					2				2	
	%						33.3				33.3
371712 HINTON HS	N 14	1		1		6				6	
	%		7.1		7.1		42.9				42.9
371335 FT. COBB-BROXTON HS	N 14			1		5				6	
	%				7.1		35.7				42.9
370325 BINGER-ONEY HS	N 9	1		1		3				5	
	%		11.1		11.1		33.3				55.6
CADDO COUNTY TOTAL	N 175	6		21		59		4		69	
	%		3.4		12.0		33.7		2.3		39.4
COUNTY: CANADIAN											
372865 PIEDMONT HS	N 35			2		5				5	
	%				5.7		14.3				14.3
374005 YUKON HS	N 167	7		13		38		6		42	
	%		4.2		7.8		22.8		3.6		25.1
371230 EL RENO HS	N 42	6		7		12		1		16	
	%		14.3		16.7		28.6		2.4		38.1
373680 UNION CITY HS	N 11	1		1				2		2	
	%		9.1		9.1				18.2		18.2
372500 MUSTANG HS	N 183	3		16		54		4		54	
	%		1.6		8.7		29.5		2.2		29.5
370550 CALUMET HS	N 7	3		1		1				5	
	%		42.9		14.3		14.3				71.4
CANADIAN COUNTY TOTAL	N 445	20		40		110		13		124	
	%		4.5		9.0		24.7		2.9		27.9
COUNTY: CARTER											
370178 ARDMORE HS	N 87	6		14		30		2		33	
	%		6.9		16.1		34.5		2.3		37.9
373345 SPRINGER HS	N 2*										
	%										
370195 PLAINVIEW HS	N 47	2		7		11		1		15	
	%		4.3		14.9		23.4		2.1		31.9
372130 LONE GROVE HS	N 33			6		11		1		12	
	%				18.2		33.3		3.0		36.4

*For freshman headcount cells of 5 or fewer, data will not be displayed to protect the privacy of individuals.

ACT H.S. CODE / SITE	OKLA. H.S. GRADUATES AS FRESHMAN HEADCOUNT	SCIENCE		ENGLISH		MATH.		READING		UNDUPLICATED REMEDIATION TOTAL	
		N	%	N	%	N	%	N	%	N	%
373950 WILSON HS	N 15	1		3		5		3		8	
	%		6.7		20.0		33.3		20.0		53.3
371655 HEALDTON HS	N 21			2		8				8	
	%				9.5		38.1				38.1
371375 FOX HS	N 8	3		1		3		1		5	
	%		37.5		12.5		37.5		12.5		62.5
370180 DICKSON HS	N 30			7		11		1		13	
	%				23.3		36.7		3.3		43.3
CARTER COUNTY TOTAL	N 243	12		40		80		9		95	
	%		4.9		16.5		32.9		3.7		39.1
COUNTY: CHEROKEE											
373453 SEQUOYAH HS	N 9	3		5		7		1		7	
	%		33.3		55.6		77.8		11.1		77.8
371845 HULBERT HS	N 10	1		3		3		1		4	
	%		10.0		30.0		30.0		10.0		40.0
373455 TAHLEQUAH HS	N 97	5		17		36		10		40	
	%		5.2		17.5		37.1		10.3		41.2
373451 MARKOMA BIBLE ACADEMY	N 1*										
	%										
CHEROKEE COUNTY TOTAL	N 117	9		25		46		12		51	
	%		7.7		21.4		39.3		10.3		43.6
COUNTY: CHOCTAW											
370410 BOSWELL HS	N 12	1		3				1		3	
	%		8.3		25.0				8.3		25.0
371360 FT TOWSON HS	N 17	1		2		2		2		4	
	%		5.9		11.8		11.8		11.8		23.5
373310 SOPER HS	N 11	1		1		5		2		6	
	%		9.1		9.1		45.5		18.2		54.5
371840 HUGO HS	N 44	4		11		12		1		18	
	%		9.1		25.0		27.3		2.3		40.9
CHOCTAW COUNTY TOTAL	N 84	7		17		19		6		31	
	%		8.3		20.2		22.6		7.1		36.9
COUNTY: CIMARRON											
370385 BOISE CITY HS	N 13	1		1						1	
	%		7.7		7.7						7.7
371305 FELT HS	N 1*										
	%										
371975 KEYES HS	N 5*										
	%										
CIMARRON COUNTY TOTAL	N 19	1		2		1				2	
	%		5.3		10.5		5.3				10.5
COUNTY: CLEVELAND											
372415 MOORE HS	N 251	4		31		95		5		104	
	%		1.6		12.4		37.8		2.0		41.4
372697 WESTMOORE HS	N 275	5		29		82		9		92	
	%		1.8		10.5		29.8		3.3		33.5
372555 NORMAN HS	N 211	1		23		61				66	
	%		0.5		10.9		28.9				31.3

*For freshman headcount cells of 5 or fewer, data will not be displayed to protect the privacy of individuals.

ACT H.S. CODE / SITE	OKLA. H.S. GRADUATES AS FRESHMAN HEADCOUNT	SCIENCE		ENGLISH		MATH.		READING		UNDUPLICATED REMEDIATION TOTAL	
		N	%	N	%	N	%	N	%	N	%
372557 NORMAN HS NORTH	N 183	1		13		71		4		75	
	%		0.5		7.1		38.8		2.2		41.0
372550 NOBLE HS	N 74			6		26				26	
	%				8.1		35.1				35.1
372105 LEXINGTON HS	N 12	1		1		3		1		3	
	%		8.3		8.3		25.0		8.3		25.0
372554 LITTLE AXE HS	N 21	1		4		8		1		9	
	%		4.8		19.0		38.1		4.8		42.9
372666 GRACE CHRISTIAN ACADEMY	N 7			1		1				1	
	%				14.3		14.3				14.3
372552 COMMUNITY CHRISTIAN SCHOOL	N 16			3		7				8	
	%				18.8		43.8				50.0
CLEVELAND COUNTY TOTAL	N 1,050	13		111		354		20		384	
	%		1.2		10.6		33.7		1.9		36.6
COUNTY: COAL											
370840 COALGATE HS	N 20			3		7				8	
	%				15.0		35.0				40.0
373645 TUPELO HS	N 9			2		1				2	
	%				22.2		11.1				22.2
370842 OLNEY HS	N 3*										
	%										
COAL COUNTY TOTAL	N 32			5		8				10	
	%				15.6		25.0				31.3
COUNTY: COMANCHE											
370530 CACHE HS	N 34	1		7		9		4		14	
	%		2.9		20.6		26.5		11.8		41.2
371875 INDIAHOMA HS	N 7	2		3		2				3	
	%		28.6		42.9		28.6				42.9
373357 STERLING HS	N 9	1		1		2				3	
	%		11.1		11.1		22.2				33.3
371450 GERONIMO HS	N 3*										
	%										
372064 MACARTHUR HS	N 105	2		22		28		11		38	
	%		1.9		21.0		26.7		10.5		36.2
372066 EISENHOWER HS	N 186			33		39		16		54	
	%				17.7		21.0		8.6		29.0
372070 LAWTON HS	N 101	2		18		14		5		31	
	%		2.0		17.8		13.9		5.0		30.7
371320 FLETCHER HS	N 13			2		6				6	
	%				15.4		46.2				46.2
371195 ELGIN HS	N 39			6		10		2		12	
	%				15.4		25.6		5.1		30.8
370680 CHATTANOOGA HS	N 10			1		1				1	
	%				10.0		10.0				10.0
372069 LAWTON CHRISTIAN SCHOOL	N 6					1				1	
	%						16.7				16.7
COMANCHE COUNTY TOTAL	N 513	8		94		114		38		165	
	%		1.6		18.3		22.2		7.4		32.2
COUNTY: COTTON											
373780 WALTERS HS	N 22			6		12		1		14	
	%				27.3		54.5		4.5		63.6
373500 TEMPLE HS	N 8			2		2				4	

*For freshman headcount cells of 5 or fewer, data will not be displayed to protect the privacy of individuals.

ACT H.S. CODE / SITE	OKLA. H.S. GRADUATES AS FRESHMAN HEADCOUNT	SCIENCE		ENGLISH		MATH.		READING		UNDUPLICATED REMEDIATION TOTAL	
		N	%	N	%	N	%	N	%	N	%
	%				25.0		25.0				50.0
373005 BIG PASTURE HS	N	7		1		1		2		2	
	%				14.3		14.3		28.6		28.6
COTTON COUNTY TOTAL	N	37		9		15		3		20	
	%				24.3		40.5		8.1		54.1
COUNTY: CRAIG											
373748 WHITE OAK HS	N	2*									
	%										
371970 KETCHUM HS	N	17				2		5		6	
	%						11.8		29.4		35.3
373860 WELCH HS	N	12		2		8				8	
	%				16.7		66.7				66.7
370380 BLUEJACKET HS	N	5*									
	%										
373747 VINITA HS	N	49	3	9		17		3		23	
	%		6.1		18.4		34.7		6.1		46.9
CRAIG COUNTY TOTAL	N	85	3	13		30		9		41	
	%		3.5		15.3		35.3		10.6		48.2
COUNTY: CREEK											
370465 BRISTOW HS	N	52	4	9		24		3		25	
	%		7.7		17.3		46.2		5.8		48.1
372230 MANNFORD HS	N	47		2		9				10	
	%				4.3		19.1				21.3
372440 MOUNDS HS	N	30	2	5		10		2		12	
	%		6.7		16.7		33.3		6.7		40.0
371100 OLIVE HS	N	8		1		4		1		4	
	%				12.5		50.0		12.5		50.0
371985 KEIFER HS	N	5*									
	%										
372595 OILTON HS	N	5*									
	%										
371045 DEPEW HS	N	15	3	2		7		1		9	
	%		20.0		13.3		46.7		6.7		60.0
371935 KELLYVILLE HS	N	18	1	2		6				8	
	%		5.6		11.1		33.3				44.4
373170 SAPULPA HS	N	121	3	17		32		5		40	
	%		2.5		14.0		26.4		4.1		33.1
371095 DRUMRIGHT HS	N	17	1	2		6		1		6	
	%		5.9		11.8		35.3		5.9		35.3
CREEK COUNTY TOTAL	N	318	14	41		102		13		119	
	%		4.4		12.9		32.1		4.1		37.4
COUNTY: CUSTER											
370165 ARAPAHO HS	N	13									
	%										
373530 THOMAS-FAY-CUSTER UNIFIED	N	21		2		5		1		5	
	%				9.5		23.8		4.8		23.8
373850 WEATHERFORD HS	N	94		1		13		6		17	
	%				1.1		13.8		6.4		18.1
370520 BUTLER HS	N	3*									
	%										
370810 CLINTON HS	N	49		6		13		2		16	
	%				12.2		26.5		4.1		32.7

*For freshman headcount cells of 5 or fewer, data will not be displayed to protect the privacy of individuals.

ACT H.S. CODE / SITE CUSTER COUNTY TOTAL	OKLA. H.S. GRADUATES AS FRESHMAN HEADCOUNT	SCIENCE		ENGLISH		MATH.		READING		UNDUPLICATED REMEDICATION TOTAL	
		N	%	N	%	N	%	N	%	N	%
CUSTER COUNTY TOTAL	180			10		32		9		39	
					5.6		17.8		5.0		21.7
COUNTY: DELAWARE											
371890 JAY HS	28	3		5		16				17	
			10.7		17.9		57.1				60.7
371550 GROVE HS	48	3		5		20				21	
			6.3		10.4		41.7				43.8
371925 KANSAS HS	12	2		1		3		1		3	
			16.7		8.3		25.0		8.3		25.0
370855 COLCORD HS	14	2		2		9		1		9	
			14.3		14.3		64.3		7.1		64.3
372580 OAKS MISSION HS	7	1				4		1		4	
			14.3				57.1		14.3		57.1
DELAWARE COUNTY TOTAL	109	11		13		52		3		54	
			10.1		11.9		47.7		2.8		49.5
COUNTY: DEWEY											
373730 VICI HS	16	3		2		5				6	
			18.8		12.5		31.3				37.5
373195 SEILING HS	16			2		3		1		4	
					12.5		18.8		6.3		25.0
373480 TALOGA HS	13	1		1				1		3	
			7.7		7.7				7.7		23.1
DEWEY COUNTY TOTAL	45	4		5		8		2		13	
			8.9		11.1		17.8		4.4		28.9
COUNTY: ELLIS											
371290 FARGO HS	11			1		1		1		1	
					9.1		9.1		9.1		9.1
370205 ARNETT HS	7			1		1		1		2	
					14.3		14.3		14.3		28.6
371410 GAGE HS	2*										
373250 SHATTUCK HS	10	1		1		1		1		2	
			10.0		10.0		10.0		10.0		20.0
ELLIS COUNTY TOTAL	30	1		3		3		3		5	
			3.3		10.0		10.0		10.0		16.7
COUNTY: GARFIELD											
373825 WAUKOMIS HS	15					3				3	
							20.0				20.0
372040 KREMLIN-HILLSDALE HS	6			1		1				1	
					16.7		16.7				16.7
371241 CHISHOLM HS	26			3		8		1		9	
					11.5		30.8		3.8		34.6
371420 GARBER HS	16			2		5		2		5	
					12.5		31.3		12.5		31.3
373830 PIONEER-PLEASANT VALE HS	22			3		6				7	
					13.6		27.3				31.8

*For freshman headcount cells of 5 or fewer, data will not be displayed to protect the privacy of individuals.

ACT H.S. CODE / SITE	OKLA. H.S. GRADUATES AS FRESHMAN HEADCOUNT	SCIENCE		ENGLISH		MATH.		READING		UNDUPLICATED REMEDIATION TOTAL	
		N	%	N	%	N	%	N	%	N	%
371242 ENID HS	N 189	1		9		29		4		33	
	%		0.5		4.8		15.3		2.1		17.5
371090 DRUMMOND HS	N 12			1		4		1		4	
	%				8.3		33.3		8.3		33.3
370915 COVINGTON-DOUGLAS HS	N 19	1		2		5		1		6	
	%		5.3		10.5		26.3		5.3		31.6
372365 OKLAHOMA BIBLE ACADEMY	N 14					2				2	
	%						14.3				14.3
GARFIELD COUNTY TOTAL	N 319	2		21		63		9		70	
	%		0.6		6.6		19.7		2.8		21.9
COUNTY: GARVIN											
373405 STRATFORD HS	N 13	3		2		8		2		9	
	%		23.1		15.4		61.5		15.4		69.2
372840 PERNELL HS	N 1*										
	%										
372810 PAOLI HS	N 6					1				1	
	%						16.7				16.7
372315 MAYSVILLE HS	N 16	1		4		6		2		9	
	%		6.3		25.0		37.5		12.5		56.3
372110 LINDSAY HS	N 24	2		3		4				5	
	%		8.3		12.5		16.7				20.8
372800 PAULS VALLEY HS	N 41	1		8		14		4		21	
	%		2.4		19.5		34.1		9.8		51.2
373990 WYNNEWOOD HS	N 30	2		2		16		1		17	
	%		6.7		6.7		53.3		3.3		56.7
371220 ELMORE CITY HS	N 19					4		2		4	
	%						21.1		10.5		21.1
GARVIN COUNTY TOTAL	N 150	9		20		54		11		67	
	%		6.0		13.3		36.0		7.3		44.7
COUNTY: GRADY											
370718 CHICKASHA HS	N 86	2		1		23				23	
	%		2.3		1.2		26.7				26.7
372405 MINCO HS	N 16	2		2		5				6	
	%		12.5		12.5		31.3				37.5
372545 NINNEKAH HS	N 15	1				7				7	
	%		6.7				46.7				46.7
370075 ALEX HS	N 19	2				5				6	
	%		10.5				26.3				31.6
373115 RUSH SPRINGS HS	N 14	3		1		2				6	
	%		21.4		7.1		14.3				42.9
370355 BRIDGE CREEK HS	N 24			6		12		1		12	
	%				25.0		50.0		4.2		50.0
373670 TUTTLE HS	N 45	1		8		15		3		16	
	%		2.2		17.8		33.3		6.7		35.6
373715 VERDEN HS	N 16	1		2		3				5	
	%		6.3		12.5		18.8				31.3
370120 AMBER-POCASSET HS	N 17					2				2	
	%						11.8				11.8
GRADY COUNTY TOTAL	N 252	12		20		74		4		83	
	%		4.8		7.9		29.4		1.6		32.9

*For freshman headcount cells of 5 or fewer, data will not be displayed to protect the privacy of individuals.

ACT H.S. CODE / SITE COUNTY: GRANT	OKLA. H.S. GRADUATES AS FRESHMAN HEADCOUNT	SCIENCE		ENGLISH		MATH.		READING		UNDUPLICATED REMEDICATION TOTAL	
		N	%	N	%	N	%	N	%	N	%
373770 WAKITA HS	N 13			1		4				4	
	%				7.7		30.8				30.8
372355 MEDFORD HS	N 10			1		2		1		3	
	%				10.0		20.0		10.0		30.0
372910 POND CREEK-HUNTER HS	N 21			3		6		3		7	
	%				14.3		28.6		14.3		33.3
372050 DEER CREEK-LAMONT HS	N 8			2		2		1		3	
	%				25.0		25.0		12.5		37.5
GRANT COUNTY TOTAL	N 52			7		14		5		17	
	%				13.5		26.9		9.6		32.7
COUNTY: GREER											
372215 MANGUM HS	N 21	1		4		3				4	
	%		4.8		19.0		14.3				19.0
371525 GRANITE HS	N 7										
	%										
GREER COUNTY TOTAL	N 28	1		4		3				4	
	%		3.6		14.3		10.7				14.3
COUNTY: HARMON											
371775 HOLLIS HS	N 19	1		7		9				13	
	%		5.3		36.8		47.4				68.4
HARMON COUNTY TOTAL	N 19	1		7		9				13	
	%		5.3		36.8		47.4				68.4
COUNTY: HARPER											
372060 LAVERNE HS	N 19			1		2				2	
	%				5.3		10.5				10.5
370495 BUFFALO HS	N 11					2				2	
	%						18.2				18.2
HARPER COUNTY TOTAL	N 30			1		4				4	
	%				3.3		13.3				13.3
COUNTY: HASKELL											
372005 KINTA HS	N 6			3		5		3		5	
	%				50.0		83.3		50.0		83.3
373365 STIGLER HS	N 48	4		7		13				13	
	%		8.3		14.6		27.1				27.1
372335 MC CURTAIN HS	N 5*										
	%										
371965 KEOTA HS	N 10	1		3		4		2		5	
	%		10.0		30.0		40.0		20.0		50.0
HASKELL COUNTY TOTAL	N 69	5		15		24		6		26	
	%		7.2		21.7		34.8		8.7		37.7
COUNTY: HUGHES											
371760 MOSS HS	N 10			1		5				5	
	%				10.0		50.0				50.0
373900 WETUMKA HS	N 9	1				4		1		4	
	%		11.1				44.4		11.1		44.4
371150 DUSTIN HS	N 2*										

*For freshman headcount cells of 5 or fewer, data will not be displayed to protect the privacy of individuals.

ACT H.S. CODE / SITE	OKLA. H.S. GRADUATES AS FRESHMAN HEADCOUNT	SCIENCE		ENGLISH		MATH.		READING		UNDUPLICATED REMEDIATION TOTAL	
		N	%	N	%	N	%	N	%	N	%
	%										
371750 HOLDENVILLE HS	N	35	2	4		13		5		14	
	%		5.7		11.4		37.1		14.3		40.0
370555 CALVIN HS	N	2*									
	%										
373425 STUART HS	N	8		2		2				3	
	%				25.0		25.0				37.5
HUGHES COUNTY TOTAL	N	66	3	8		27		8		30	
	%		4.5		12.1		40.9		12.1		45.5
COUNTY: JACKSON											
370112 NAVAJO HS	N	25	5	6		7				10	
	%		20.0		24.0		28.0				40.0
371105 DUKE HS	N	8	1	2		4				4	
	%		12.5		25.0		50.0				50.0
370105 ALTUS HS	N	94	4	8		25				26	
	%		4.3		8.5		26.6				27.7
371190 ELDORADO HS	N	2*									
	%										
372750 OLUSTEE HS	N	5*									
	%										
370345 BLAIR HS	N	5*									
	%										
JACKSON COUNTY TOTAL	N	139	11	18		45				49	
	%		7.9		12.9		32.4				35.3
COUNTY: JEFFERSON											
373120 RYAN HS	N	10	1	2		6		1		6	
	%		10.0		20.0		60.0		10.0		60.0
373060 RINGLING HS	N	17		1		2				3	
	%				5.9		11.8				17.6
373837 WAURIKA HS	N	16				5				5	
	%						31.3				31.3
JEFFERSON COUNTY TOTAL	N	43	1	3		13		1		14	
	%		2.3		7.0		30.2		2.3		32.6
COUNTY: JOHNSTON											
372400 MILL CREEK HS	N	4*									
	%										
373550 TISHOMINGO HS	N	36	5	9		10		2		14	
	%		13.9		25.0		27.8		5.6		38.9
372390 MILBURN HS	N	8		5		6				7	
	%				62.5		75.0				87.5
370860 COLEMAN HS	N	6				1				1	
	%						16.7				16.7
373795 WAPANUCKA HS	N	7		2		2		1		5	
	%				28.6		28.6		14.3		71.4
JOHNSTON COUNTY TOTAL	N	61	5	16		21		3		29	
	%		8.2		26.2		34.4		4.9		47.5

*For freshman headcount cells of 5 or fewer, data will not be displayed to protect the privacy of individuals.

ACT H.S. CODE / SITE COUNTY: KAY	OKLA. H.S. GRADUATES AS FRESHMAN HEADCOUNT	SCIENCE		ENGLISH		MATH.		READING		UNDUPLICATED REMEDICATION TOTAL	
		N	%	N	%	N	%	N	%	N	%
370445 BRAMAN HS	N 9	2		4		7		3		7	
	%		22.2		44.4		77.8		33.3		77.8
372535 NEWKIRK HS	N 24			4		12		3		12	
	%				16.7		50.0		12.5		50.0
370340 BLACKWELL HS	N 50	2		7		13		2		14	
	%		4.0		14.0		26.0		4.0		28.0
372895 PONCA CITY HS	N 153	2		22		40		14		44	
	%		1.3		14.4		26.1		9.2		28.8
373560 TONKAWA HS	N 20			2		7		2		7	
	%				10.0		35.0		10.0		35.0
KAY COUNTY TOTAL	N 256	6		39		79		24		84	
	%		2.3		15.2		30.9		9.4		32.8
COUNTY: KINGFISHER											
371080 DOVER HS	N 5*										
	%										
372760 LOMEGA HS	N 6					1				1	
	%						16.7				16.7
371995 KINGFISHER HS	N 40	3		3		11				12	
	%		7.5		7.5		27.5				30.0
371675 HENNESSEY HS	N 16					1		1		2	
	%						6.3		6.3		12.5
370645 CASHION HS	N 12					4		1		4	
	%						33.3		8.3		33.3
372607 OKARCHE HS	N 13			1		2		1		3	
	%				7.7		15.4		7.7		23.1
KINGFISHER COUNTY TOTAL	N 92	3		5		21		4		24	
	%		3.3		5.4		22.8		4.3		26.1
COUNTY: KIOWA											
371740 HOBART HS	N 32	2		2		8		2		10	
	%		6.3		6.3		25.0		6.3		31.3
372135 LONE WOLF HS	N 6			2		1				2	
	%				33.3		16.7				33.3
372455 MOUNTAIN VIEW-GOTEBO HS	N 18	2		1		2		1		4	
	%		11.1		5.6		11.1		5.6		22.2
373305 SNYDER HS	N 14	2		4		9		1		10	
	%		14.3		28.6		64.3		7.1		71.4
KIOWA COUNTY TOTAL	N 70	6		9		20		4		26	
	%		8.6		12.9		28.6		5.7		37.1
COUNTY: LATIMER											
373035 REDROCK HS	N 5*										
	%										
373930 WILBURTON HS	N 39			6		21		5		23	
	%				15.4		53.8		12.8		59.0
373030 RED OAK HS	N 5*										
	%										
373470 BUFFALO VALLEY HS	N 4*										
	%										

*For freshman headcount cells of 5 or fewer, data will not be displayed to protect the privacy of individuals.

ACT H.S. CODE / SITE	OKLA. H.S. GRADUATES AS FRESHMAN HEADCOUNT	SCIENCE		ENGLISH		MATH.		READING		UNDUPLICATED REMEDIATION TOTAL	
		N	%	N	%	N	%	N	%	N	%
372798 PANOLA HS	N 9			3		5		2		5	
	%				33.3		55.6		22.2		55.6
LATIMER COUNTY TOTAL	N 62			12		30		7		33	
	%				19.4		48.4		11.3		53.2
COUNTY: LEFLORE											
373340 SPIRO HS	N 27	2		6		9				10	
	%		7.4		22.2		33.3				37.0
371660 HEAVENER HS	N 35	4		3		10				11	
	%		11.4		8.6		28.6				31.4
372887 POCOLA HS	N 10			3		3				5	
	%				30.0		30.0				50.0
372085 LE FLORE HS	N 7			3		3		2		4	
	%				42.9		42.9		28.6		57.1
370565 CAMERON HS	N 4*										
	%										
372795 PANAMA HS	N 14	1				7				7	
	%		7.1				50.0				50.0
370395 BOKOSHE HS	N 16	2		2		3				3	
	%		12.5		12.5		18.8				18.8
372930 POTEAU HS	N 24					5				5	
	%						20.8				20.8
373965 WISTER HS	N 12	3		2		4		1		5	
	%		25.0		16.7		33.3		8.3		41.7
373475 TALIHINA HS	N 19			2		2				4	
	%				10.5		10.5				21.1
373925 WHITESBORO HS	N 6					4				4	
	%						66.7				66.7
371825 HOWE HS	N 7	3		3		5				6	
	%		42.9		42.9		71.4				85.7
370203 ARKOMA HS	N 6	1		3		2				4	
	%		16.7		50.0		33.3				66.7
LEFLORE COUNTY TOTAL	N 187	17		28		58		3		69	
	%		9.1		15.0		31.0		1.6		36.9
COUNTY: LINCOLN											
370675 CHANDLER HS	N 44	2		1		9		1		9	
	%		4.5		2.3		20.5		2.3		20.5
370995 DAVENPORT HS	N 16			3		5		4		5	
	%				18.8		31.3		25.0		31.3
373885 WELLSTON HS	N 21	1		6		8		1		9	
	%		4.8		28.6		38.1		4.8		42.9
373415 STROUD HS	N 25	1				6				6	
	%		4.0				24.0				24.0
372360 MEEKER HS	N 29			3		10		3		12	
	%				10.3		34.5		10.3		41.4
372940 PRAGUE HS	N 22			4		6				6	
	%				18.2		27.3				27.3
370620 CARNEY HS	N 5*										
	%										
370055 AGRA HS	N 3*										
	%										
LINCOLN COUNTY TOTAL	N 165	4		19		48		10		51	
	%		2.4		11.5		29.1		6.1		30.9

*For freshman headcount cells of 5 or fewer, data will not be displayed to protect the privacy of individuals.

ACT H.S. CODE / SITE	OKLA. H.S. GRADUATES AS FRESHMAN HEADCOUNT	SCIENCE		ENGLISH		MATH.		READING		UNDUPLICATED REMEDIATION TOTAL	
		N	%	N	%	N	%	N	%	N	%
COUNTY: LOGAN											
371565 GUTHRIE HS	N	92	1	10		19		5		21	
	%		1.1	10.9		20.7		5.4		22.8	
370945 CRESCENT HS	N	14		3		6				6	
	%			21.4		42.9				42.9	
372775 MULHALL-ORLANDO HS	N	7		1		1				1	
	%			14.3		14.3				14.3	
370930 COYLE HS	N	11	1	1		3				3	
	%		9.1	9.1		27.3				27.3	
LOGAN COUNTY TOTAL	N	124	2	15		29		5		31	
	%		1.6	12.1		23.4		4.0		25.0	
COUNTY: LOVE											
373525 THACKERVILLE HS	N	7		1		2				2	
	%			14.3		28.6				28.6	
370510 TURNER HS	N	5*									
	%										
372255 MARIETTA HS	N	18	2	2		7				9	
	%		11.1	11.1		38.9				50.0	
LOVE COUNTY TOTAL	N	30	3	5		11		1		14	
	%		10.0	16.7		36.7		3.3		46.7	
COUNTY: MAJOR											
373070 RINGWOOD HS	N	12				1				1	
	%					8.3				8.3	
370085 ALINE-CLEO HS	N	9		2		3				3	
	%			22.2		33.3				33.3	
371280 FAIRVIEW HS	N	47	1	1		1				2	
	%		2.1	2.1		2.1				4.3	
370369 MARANATHA CHRISTIAN ACADEMY	N	12		1		5				5	
	%			8.3		41.7				41.7	
372045 CIMARRON HS	N	1*									
	%										
MAJOR COUNTY TOTAL	N	81	1	4		10				11	
	%		1.2	4.9		12.3				13.6	
COUNTY: MARSHALL											
372185 MADILL HS	N	32	1	6		8		1		11	
	%		3.1	18.8		25.0		3.1		34.4	
372000 KINGSTON HS	N	22	2	2		4		1		6	
	%		9.1	9.1		18.2		4.5		27.3	
MARSHALL COUNTY TOTAL	N	54	3	8		12		2		17	
	%		5.6	14.8		22.2		3.7		31.5	
COUNTY: MAYES											
372955 PRYOR HS	N	56	1	3		9		7		14	
	%		1.8	5.4		16.1		12.5		25.0	
370030 ADAIR HS	N	21				2		3		5	
	%					9.5		14.3		23.8	
373140 SALINA HS	N	18	4	4		6		4		9	
	%		22.2	22.2		33.3		22.2		50.0	
372125 LOCUST GROVE HS	N	24	4	6		11		3		12	
	%		16.7	25.0		45.8		12.5		50.0	

*For freshman headcount cells of 5 or fewer, data will not be displayed to protect the privacy of individuals.

ACT H.S. CODE / SITE	OKLA. H.S. GRADUATES AS FRESHMAN HEADCOUNT	SCIENCE		ENGLISH		MATH.		READING		UNDUPLICATED REMEDIATION TOTAL	
		N	%	N	%	N	%	N	%	N	%
370765 CHOUTEAU-MAZIE HS	N 15			4		6		1		8	
	%				26.7		40.0		6.7		53.3
MAYES COUNTY TOTAL	N 134	9		17		34		18		48	
	%		6.7		12.7		25.4		13.4		35.8
COUNTY: MCCLAIN											
372530 NEWCASTLE HS	N 45			8		19		2		22	
	%				17.8		42.2		4.4		48.9
371058 DIBBLE HS	N 10	1		1		7		2		7	
	%		10.0		10.0		70.0		20.0		70.0
373805 WASHINGTON HS	N 25			3		9		1		10	
	%				12.0		36.0		4.0		40.0
373840 WAYNE HS	N 18			2		5		1		6	
	%				11.1		27.8		5.6		33.3
372965 PURCELL HS	N 31	1		5		11		2		14	
	%		3.2		16.1		35.5		6.5		45.2
370353 BLANCHARD HS	N 43			4		10				10	
	%				9.3		23.3				23.3
MCCLAIN COUNTY TOTAL	N 172	2		23		61		8		69	
	%		1.2		13.4		35.5		4.7		40.1
COUNTY: MCCURTAIN											
371870 IDABEL HS	N 36	3		3		11		2		13	
	%		8.3		8.3		30.6		5.6		36.1
371635 HAWORTH HS	N 13			2		2		1		4	
	%				15.4		15.4		7.7		30.8
373695 VALLIANT HS	N 27	1		4		6		1		8	
	%		3.7		14.8		22.2		3.7		29.6
371155 EAGLETOWN HS	N 6			1		3		1		3	
	%				16.7		50.0		16.7		50.0
373300 SMITHVILLE HS	N 10	2				2				2	
	%		20.0				20.0				20.0
373980 WRIGHT CITY HS	N 17	2		3		3		1		4	
	%		11.8		17.6		17.6		5.9		23.5
370275 BATTIEST HS	N 12			2		6		1		6	
	%				16.7		50.0		8.3		50.0
370478 BROKEN BOW HS	N 39	1		2		9		1		10	
	%		2.6		5.1		23.1		2.6		25.6
MCCURTAIN COUNTY TOTAL	N 160	9		17		42		8		50	
	%		5.6		10.6		26.3		5.0		31.3
COUNTY: MCINTOSH											
371265 EUFAULA HS	N 26	7		9		14		2		18	
	%		26.9		34.6		53.8		7.7		69.2
370690 CHECOTAH HS	N 49	6		6		13		4		16	
	%		12.2		12.2		26.5		8.2		32.7
370910 MIDWAY HS	N 5*										
	%										
371590 HANNA HS	N 6	3		4		6		3		6	
	%		50.0		66.7		0.0		50.0		100.0
MCINTOSH COUNTY TOTAL	N 86	18		20		37		9		44	
	%		20.9		23.3		43.0		10.5		51.2

*For freshman headcount cells of 5 or fewer, data will not be displayed to protect the privacy of individuals.

ACT H.S. CODE / SITE COUNTY: MURRAY	OKLA. H.S. GRADUATES AS FRESHMAN HEADCOUNT	SCIENCE		ENGLISH		MATH.		READING		UNDUPLICATED REMEDICATION TOTAL	
		N	%	N	%	N	%	N	%	N	%
373430 OKLAHOMA SCHOOL FOR DEAF	N 6			4		4		1		5	
	%				66.7		66.7		16.7		83.3
373435 SULPHUR HS	N 26			4		7		2		11	
	%				15.4		26.9		7.7		42.3
371015 DAVIS HS	N 22			4		5		1		6	
	%				18.2		22.7		4.5		27.3
MURRAY COUNTY TOTAL	N 54			12		16		4		22	
	%				22.2		29.6		7.4		40.7
COUNTY: MUSKOGEE											
372494 PARKVIEW SCHOOL	N 4*										
	%										
371625 HASKELL HS	N 19	1		2		9				10	
	%		5.3		10.5		47.4				52.6
371340 FT GIBSON HS	N 41	3		4		13				13	
	%		7.3		9.8		31.7				31.7
373855 WEBBERS FALLS HS	N 7			1		1				1	
	%				14.3		14.3				14.3
372735 OKTAHA HS	N 14	1		3		8				8	
	%		7.1		21.4		57.1				57.1
373450 MOTON HS	N 2*										
	%										
372485 MUSKOGEE HS	N 140	23		36		60		10		63	
	%		16.4		25.7		42.9		7.1		45.0
372483 HILLDALE HS	N 41	4		5		11		1		13	
	%		9.8		12.2		26.8		2.4		31.7
370440 BRAGGS	N 4*										
	%										
373800 WARNER HS	N 29	5		6		11				13	
	%		17.2		20.7		37.9				44.8
372925 PORUM HS	N 4*										
	%										
MUSKOGEE COUNTY TOTAL	N 305	39		60		119		12		128	
	%		12.8		19.7		39.0		3.9		42.0
COUNTY: NOBLE											
372850 PERRY HS	N 40	2		5		17		4		18	
	%		5.0		12.5		42.5		10.0		45.0
370320 BILLINGS HS	N 11			4		5		1		6	
	%				36.4		45.5		9.1		54.5
372265 FRONTIER HS	N 9					2				2	
	%						22.2				22.2
372435 MORRISON HS	N 20	2		5		6		2		7	
	%		10.0		25.0		30.0		10.0		35.0
NOBLE COUNTY TOTAL	N 80	4		14		30		7		33	
	%		5.0		17.5		37.5		8.8		41.3
COUNTY: NOWATA											
372095 LENAPAH HS	N 5*										
	%										
372570 NOWATA HS	N 17			5		2		5		8	
	%				29.4		11.8		29.4		47.1
NOWATA COUNTY TOTAL	N 22	2		6		4		5		11	

*For freshman headcount cells of 5 or fewer, data will not be displayed to protect the privacy of individuals.

ACT H.S. CODE / SITE	OKLA. H.S. GRADUATES AS FRESHMAN HEADCOUNT	SCIENCE		ENGLISH		MATH.		READING		UNDUPLICATED REMEDIATION TOTAL	
		N	%	N	%	N	%	N	%	N	%
			9.1		27.3		18.2		22.7		50.0
COUNTY: OKFUSKEE											
372290 MASON HS	2*										
370400 BOLEY HS	3*										
372790 PADEN HS	6			2		4				4	
372630 OKEMAH HS	23			3		7				9	
373875 WELEETKA HS	22	4		9		11		4		14	
373870 GRAHAM HS	1*		18.2		40.9		50.0		18.2		63.6
OKFUSKEE COUNTY TOTAL	57	4		15		27		6		32	
			7.0		26.3		47.4		10.5		56.1
COUNTY: OKLAHOMA											
372684 OKLA. SCHOOL OF SCI & MATH	31										
372690 PUTNAM CITY HS	188	2		20		47		7		52	
372691 PUTNAM CITY NORTH HS	246		1.1		10.6		25.0		3.7		27.7
372692 PUTNAM CITY WEST HS	140	1		12		31		6		36	
372170 LUTHER HS	16	1		4		6				7	
370760 CHOCTAW HS	155	1		26		47		6		55	
371180 DEER CREEK HS	46	1		2		5		1		5	
371605 HARRAH HS	56			5		19		1		22	
371920 JONES HS	27	1		5		10				12	
371185 MEMORIAL HS	238	2		18		27		7		33	
371186 NORTH HS	179		0.8		7.6		11.3		2.9		13.9
371188 SANTA FE HS	164	2		12		24		2		27	
372674 MILLWOOD HS	41	6		14		26		4		27	
372699 WESTERN HEIGHTS HS	76	1		15		29		3		33	
372378 CARL ALBERT HS	116	1		14		38				39	
372380 DEL CITY HS	159	3		24		53		3		58	
372385 MIDWEST CITY HS	174	5		42		63		7		77	
			2.9		24.1		36.2		4.0		44.3

*For freshman headcount cells of 5 or fewer, data will not be displayed to protect the privacy of individuals.

ACT H.S. CODE / SITE	OKLA. H.S. GRADUATES AS FRESHMAN HEADCOUNT	SCIENCE		ENGLISH		MATH.		READING		UNDUPLICATED REMEDIATION TOTAL	
		N	%	N	%	N	%	N	%	N	%
372655 CROOKED OAK HS	N 12	1		6		7				9	
	%		8.3		50.0		58.3				75.0
370310 BETHANY HS	N 25			3		8				8	
	%				12.0		32.0				32.0
372635 CAPITOL HILL HS	N 22			8		14				15	
	%				36.4		63.6				68.2
372651 CLASSEN HS OF ADVANCED STUDIES	N 42			1		5				5	
	%				2.4		11.9				11.9
372660 DOUGLASS HS	N 52	4		26		35		3		41	
	%		7.7		50.0		67.3		5.8		78.8
372662 EMERSON ALT. ED. CTR.	N 5*										
	%										
372670 JOHN MARSHALL HS	N 80	6		30		54		8		57	
	%		7.5		37.5		67.5		10.0		71.3
372680 NE ACADEMY FOR HEALTH SCI & EN	N 66	6		19		43		2		44	
	%		9.1		28.8		65.2		3.0		66.7
372685 NORTHWEST CLASSEN HS	N 74			24		43		6		46	
	%				32.4		58.1		8.1		62.2
372695 SOUTHEAST HS	N 76			26		44		1		46	
	%				34.2		57.9		1.3		60.5
372696 STAR SPENCER HS	N 34	2		10		25		1		28	
	%		5.9		29.4		73.5		2.9		82.4
372698 U. S. GRANT HS	N 61	1		29		39		1		46	
	%		1.6		47.5		63.9		1.6		75.4
371187 OKLAHOMA CHRISTIAN SCHOOL	N 24					2				2	
	%						8.3				8.3
372686 OKC CHRISTIAN ACADEMY	N 3*										
	%										
372640 CASADY SCHOOL	N 23					1				1	
	%						4.3				4.3
372668 LIFE CHRISTIAN SCHOOL	N 6			1		1				1	
	%				16.7		16.7				16.7
372669 HERITAGE HALL UPPER SCHOOL	N 25					1				1	
	%						4.0				4.0
372675 MT ST MARYS HS	N 24			5		15		1		15	
	%				20.8		62.5		4.2		62.5
372645 BISHOP MC GUINNESS	N 82	1		5		19		3		22	
	%		1.2		6.1		23.2		3.7		26.8
372647 CHRISTIAN HERITAGE ACADEMY	N 23					6		1		7	
	%						26.1		4.3		30.4
OKLAHOMA COUNTY TOTAL	N 2,811	49		434		876		86		971	
	%		1.7		15.4		31.2		3.1		34.5
COUNTY: OKMULGEE											
372710 OKMULGEE HS	N 62	15		9		32		11		32	
	%		24.2		14.5		51.6		17.7		51.6
371685 HENRYETTA HS	N 32	1		5		11		2		13	
	%		3.1		15.6		34.4		6.3		40.6
372432 MORRIS HS	N 39	7		5		20		6		24	
	%		17.9		12.8		51.3		15.4		61.5
370290 BEGGS HS	N 25	3		6		8		2		9	
	%		12.0		24.0		32.0		8.0		36.0
372945 PRESTON HS	N 15	1		3		6		3		6	
	%		6.7		20.0		40.0		20.0		40.0
373190 SCHULTER HS	N 5*										
	%										
371700 WILSON HS	N 8	3		3		5		1		5	

*For freshman headcount cells of 5 or fewer, data will not be displayed to protect the privacy of individuals.

ACT H.S. CODE / SITE	OKLA. H.S. GRADUATES AS FRESHMAN HEADCOUNT	SCIENCE		ENGLISH		MATH.		READING		UNDUPLICATED REMEDIATION TOTAL	
		N	%	N	%	N	%	N	%	N	%
			37.5		37.5		62.5		12.5		62.5
371050 DEWAR HS	N 18	4		3		6		2		8	
			22.2		16.7		33.3		11.1		44.4
OKMULGEE COUNTY TOTAL	N 204	35		35		91		28		100	
			17.2		17.2		44.6		13.7		49.0
COUNTY: OSAGE											
372820 PAWHUSKA HS	N 33	2		6		11		1		11	
			6.1		18.2		33.3		3.0		33.3
373280 SHIDLER HS	N 9			2		6				7	
					22.2		66.7				77.8
370260 BARNSDALL HS	N 7			1		3				3	
					14.3		42.9				42.9
374000 WYNONA HS	N 2*										
371805 HOMINY HS	N 24	5		5		11		6		16	
			20.8		20.8		45.8		25.0		66.7
372950 PRUE HS	N 6	1				4				4	
			16.7				66.7				66.7
371270 WOODLAND HS	N 12			2		5		2		5	
					16.7		41.7		16.7		41.7
OSAGE COUNTY TOTAL	N 93	8		16		42		9		48	
			8.6		17.2		45.2		9.7		51.6
COUNTY: OTTAWA											
373985 WYANDOTTE HS	N 11			1		4				5	
					9.1		36.4				45.5
372975 QUAPAW HS	N 12	2		4		7				9	
			16.7		33.3		58.3				75.0
372860 PICHER-CARDIN HS	N 11	1		1		5				5	
			9.1		9.1		45.5				45.5
370880 COMMERCE HS	N 23	5		3		12		1		13	
			21.7		13.0		52.2		4.3		56.5
372375 MIAMI HS	N 48	4		8		23		1		24	
			8.3		16.7		47.9		2.1		50.0
370050 AFTON HS	N 9	1				5				5	
			11.1				55.6				55.6
371275 FAIRLAND HS	N 18			3		6				8	
					16.7		33.3				44.4
OTTAWA COUNTY TOTAL	N 132	13		20		62		2		69	
			9.8		15.2		47.0		1.5		52.3
COUNTY: PAWNEE											
372825 PAWNEE HS	N 40	2		10		16		5		18	
			5.0		25.0		40.0		12.5		45.0
370805 CLEVELAND HS	N 48	1		7		10		1		13	
			2.1		14.6		20.8		2.1		27.1
PAWNEE COUNTY TOTAL	N 88	3		17		26		6		31	
			3.4		19.3		29.5		6.8		35.2

*For freshman headcount cells of 5 or fewer, data will not be displayed to protect the privacy of individuals.

ACT H.S. CODE / SITE COUNTY: PAYNE	OKLA. H.S. GRADUATES AS FRESHMAN HEADCOUNT	SCIENCE		ENGLISH		MATH.		READING		UNDUPLICATED REMEDICATION TOTAL	
		N	%	N	%	N	%	N	%	N	%
373075 RIPLEY HS	N 13					2		1		2	
	%					15.4		7.7		15.4	
373370 STILLWATER HS	N 146	10		9		41		7		45	
	%		6.8	6.2		28.1		4.8		30.8	
372835 PERKINS-TRYON HS	N 26			3		15		2		15	
	%			11.5		57.7		7.7		57.7	
370965 CUSHING HS	N 54	1		4		15		2		15	
	%		1.9	7.4		27.8		3.7		27.8	
371465 GLENCOE HS	N 7										
	%										
374005 YALE HS	N 15	1		3		6		1		7	
	%		6.7	20.0		40.0		6.7		46.7	
PAYNE COUNTY TOTAL	N 261	12		19		79		13		84	
	%		4.6	7.3		30.3		5.0		32.2	
COUNTY: PITTSBURG											
371610 HARTSHORNE HS	N 23	4		8		14		5		17	
	%		17.4	34.8		60.9		21.7		73.9	
370570 CANADIAN HS	N 11	1		1		6				6	
	%		9.1	9.1		54.5				54.5	
371580 HAILEYVILLE HS	N 8			3		2		2		3	
	%			37.5		25.0		25.0		37.5	
372015 KIOWA HS	N 11			5		5				6	
	%			45.5		45.5				54.5	
372990 QUINTON HS	N 14	2		7		8		2		9	
	%		14.3	50.0		57.1		14.3		64.3	
371880 INDIANOLA HS	N 15			2		8		5		8	
	%			13.3		53.3		33.3		53.3	
370955 CROWDER HS	N 18			5		10		4		11	
	%			27.8		55.6		22.2		61.1	
373180 SAVANNA HS	N 17			2		6		1		6	
	%			11.8		35.3		5.9		35.3	
372875 PITTSBURG HS	N 5*										
	%										
372320 MC ALESTER HS	N 99	1		12		26		5		33	
	%		1.0	12.1		26.3		5.1		33.3	
379016 ALTERNATIVE HIGH SCHOOL	N 4*										
	%										
PITTSBURG COUNTY TOTAL	N 225	8		45		87		26		103	
	%		3.6	20.0		38.7		11.6		45.8	
COUNTY: PONTOTOC											
370090 ALLEN HS	N 14	1		1		4		2		6	
	%		7.1	7.1		28.6		14.3		42.9	
373700 VANOSS HS	N 14			1		3		1		3	
	%			7.1		21.4		7.1		21.4	
370005 BYNG HS	N 38	1		2		10		6		13	
	%		2.6	5.3		26.3		15.8		34.2	
370003 ADA HS	N 75	3		7		11		6		18	
	%		4.0	9.3		14.7		8.0		24.0	
371310 MC LISH HS	N 2*										
	%										

*For freshman headcount cells of 5 or fewer, data will not be displayed to protect the privacy of individuals.

ACT H.S. CODE / SITE	OKLA. H.S. GRADUATES AS FRESHMAN HEADCOUNT	SCIENCE		ENGLISH		MATH.		READING		UNDUPLICATED REMEDIATION TOTAL	
		N	%	N	%	N	%	N	%	N	%
370020 LATTA HS	N 27					5		1		5	
	%						18.5		3.7		18.5
373395 STONEWALL HS	N 10	1		1		5				5	
	%		10.0		10.0		50.0				50.0
373085 ROFF HS	N 8			2		3				4	
	%				25.0		37.5				50.0
PONTOTOC COUNTY TOTAL	N 188	6		14		42		16		55	
	%		3.2		7.4		22.3		8.5		29.3
COUNTY: POTTAWATOMIE											
372340 MC LOUD HS	N 46			8		22				22	
	%				17.4		47.8				47.8
370990 DALE HS	N 16	1		5		6		1		8	
	%		6.3		31.3		37.5		6.3		50.0
373255 BETHEL HS	N 32			1		16		1		16	
	%				3.1		50.0		3.1		50.0
372180 MACOMB HS	N 6			2		6				6	
	%				33.3		0.0				100.0
371165 EARLSBORO HS	N 7	1		1		3		2		3	
	%		14.3		14.3		42.9		28.6		42.9
373490 TECUMSEH HS	N 60	1		11		27		6		30	
	%		1.7		18.3		45.0		10.0		50.0
373278 SHAWNEE HS	N 98	3		17		39		6		46	
	%		3.1		17.3		39.8		6.1		46.9
373279 WASHINGTON ACADEMY	N 1*										
	%										
370210 ASHER HS	N 8					1		1		2	
	%						12.5		12.5		25.0
373785 WANETTE HS	N 2*										
	%										
372300 MAUD HS	N 8	1		3		4		2		4	
	%		12.5		37.5		50.0		25.0		50.0
POTTAWATOMIE COUNTY TOTAL	N 284	7		48		125		20		139	
	%		2.5		16.9		44.0		7.0		48.9
COUNTY: PUSHMATAHA											
373015 RATTAN HS	N 16			2		4				5	
	%				12.5		25.0				31.3
370790 CLAYTON HS	N 12			1		4		1		4	
	%				8.3		33.3		8.3		33.3
370150 ANTLERS HS	N 28	1		7		5		2		10	
	%		3.6		25.0		17.9		7.1		35.7
372460 MOYERS HS	N 6	1		1		4				4	
	%		16.7		16.7		66.7				66.7
PUSHMATAHA COUNTY TOTAL	N 62	2		11		17		3		23	
	%		3.2		17.7		27.4		4.8		37.1
COUNTY: ROGER MILLS											
372080 LEEDEY HS	N 11					2				2	
	%						18.2				18.2
373050 REYDON HS	N 10					3		2		4	
	%						30.0		20.0		40.0
370715 CHEYENNE HS	N 10										
	%										
373445 SWEETWATER HS	N 4*										

*For freshman headcount cells of 5 or fewer, data will not be displayed to protect the privacy of individuals.

ACT H.S. CODE / SITE	OKLA. H.S. GRADUATES AS FRESHMAN HEADCOUNT	SCIENCE		ENGLISH		MATH.		READING		UNDUPLICATED REMEDIATION TOTAL	
		N	%	N	%	N	%	N	%	N	%
371585 HAMMON HS	N 9			1		2		1		2	
	%				11.1		22.2		11.1		22.2
ROGER MILLS COUNTY TOTAL	N 44			1		7		3		8	
	%				2.3		15.9		6.8		18.2
COUNTY: ROGERS											
370770 CLAREMORE HS	N 107	8		12		26		21		39	
	%		7.5		11.2		24.3		19.6		36.4
370650 CATOOSA HS	N 56	3		9		21		13		30	
	%		5.4		16.1		37.5		23.2		53.6
370700 CHELSEA HS	N 22	2		5		7		4		11	
	%		9.1		22.7		31.8		18.2		50.0
372765 OOLOGAH-TALALA HS	N 47	4		7		17		13		23	
	%		8.5		14.9		36.2		27.7		48.9
371885 INOLA HS	N 29	3		6		6		9		16	
	%		10.3		20.7		20.7		31.0		55.2
370780 SEQUOYAH HS	N 28	3		5		8		5		13	
	%		10.7		17.9		28.6		17.9		46.4
371380 FOYIL HS	N 5*										
	%										
ROGERS COUNTY TOTAL	N 294	25		47		88		69		136	
	%		8.5		16.0		29.9		23.5		46.3
COUNTY: SEMINOLE											
373210 SEMINOLE HS	N 37	1		3		10		2		12	
	%		2.7		8.1		27.0		5.4		32.4
373915 WEWOKA HS	N 22			4		10		3		10	
	%				18.2		45.5		13.6		45.5
370415 BOWLEGS HS	N 3*										
	%										
372030 KONAWA HS	N 22	3		3		6		2		6	
	%		13.6		13.6		27.3		9.1		27.3
372540 NEW LIMA HS	N 4*										
	%										
373225 VARNUM HS	N 2*										
	%										
373175 SASAKWA HS	N 6			2		4		1		4	
	%				33.3		66.7		16.7		66.7
373220 STROTHER HS	N 11			1		4		1		4	
	%				9.1		36.4		9.1		36.4
370948 BUTNER HS	N 12			5		7		3		7	
	%				41.7		58.3		25.0		58.3
SEMINOLE COUNTY TOTAL	N 119	5		19		46		14		48	
	%		4.2		16.0		38.7		11.8		40.3
COUNTY: SEQUOYAH											
373150 SALLISAW HS	N 46			2		8		1		9	
	%				4.3		17.4		2.2		19.6
373725 VIAN HS	N 20	1		6		8		1		9	
	%		5.0		30.0		40.0		5.0		45.0
372470 MULDROW HS	N 14	2		1		3				5	
	%		14.3		7.1		21.4				35.7
371415 GANS HS	N 3*										
	%										

*For freshman headcount cells of 5 or fewer, data will not be displayed to protect the privacy of individuals.

ACT H.S. CODE / SITE	OKLA. H.S. GRADUATES AS FRESHMAN HEADCOUNT	SCIENCE		ENGLISH		MATH.		READING		UNDUPLICATED REMEDIATION TOTAL	
		N	%	N	%	N	%	N	%	N	%
373090 ROLAND HS	N 21	1		8		9		1		13	
	%		4.8		38.1		42.9		4.8		61.9
371485 GORE HS	N 21			4		9		1		10	
	%				19.0		42.9		4.8		47.6
373145 CENTRAL HS	N 8					1				1	
	%						12.5				12.5
SEQUOYAH COUNTY TOTAL	N 133	5		21		38		4		48	
	%		3.8		15.8		28.6		3.0		36.1
COUNTY: STEPHENS											
371109 DUNCAN HS	N 110	2		15		27		5		32	
	%		1.8		13.6		24.5		4.5		29.1
370875 COMANCHE HS	N 29			8		13		2		14	
	%				27.6		44.8		6.9		48.3
372275 MARLOW HS	N 49	1		4		10		4		14	
	%		2.0		8.2		20.4		8.2		28.6
373705 VELMA-ALMA HS	N 18	1		2		3		1		4	
	%		5.6		11.1		16.7		5.6		22.2
371115 EMPIRE HS	N 14			1		5				5	
	%				7.1		35.7				35.7
372270 CENTRAL HIGH HS	N 12			2		4				4	
	%				16.7		33.3				33.3
370450 BRAY-DOYLE HS	N 9			1		1		1		3	
	%				11.1		11.1		11.1		33.3
STEPHENS COUNTY TOTAL	N 241	4		33		63		13		76	
	%		1.7		13.7		26.1		5.4		31.5
COUNTY: TEXAS											
371570 GUYMON HS	N 54	7		6		11		3		15	
	%		13.0		11.1		20.4		5.6		27.8
371600 HARDESTY HS	N 2*										
	%										
371820 HOOKER HS	N 14	3		4		4		2		5	
	%		21.4		28.6		28.6		14.3		35.7
373675 TYRONE HS	N 2*										
	%										
371480 GOODWELL HS	N 6	1								1	
	%		16.7								16.7
373515 TEXHOMA HS	N 7	1		1						2	
	%		14.3		14.3						28.6
TEXAS COUNTY TOTAL	N 85	12		13		16		5		25	
	%		14.1		15.3		18.8		5.9		29.4
COUNTY: TILLMAN											
373535 TIPTON HS	N 10	4		2		5				5	
	%		40.0		20.0		50.0				50.0
371000 DAVIDSON HS	N 5*										
	%										
371395 FREDERICK HS	N 26	1		6		10		1		11	
	%		3.8		23.1		38.5		3.8		42.3
371515 GRANDFIELD HS	N 7			2		2				3	
	%				28.6		28.6				42.9
TILLMAN COUNTY TOTAL	N 48	5		10		17		1		19	
	%		10.4		20.8		35.4		2.1		39.6

*For freshman headcount cells of 5 or fewer, data will not be displayed to protect the privacy of individuals.

ACT H.S. CODE / SITE
COUNTY: TULSA

ACT H.S. CODE / SITE COUNTY: TULSA	OKLA. H.S. GRADUATES AS FRESHMAN HEADCOUNT	SCIENCE		ENGLISH		MATH.		READING		UNDUPLICATED REMEDICATION TOTAL	
		N	%	N	%	N	%	N	%	N	%
373590 B T WASHINGTON HS	N 126	12		14		63		9		64	
	%		9.5	11.1		50.0		7.1		50.8	
373600 CENTRAL HS	N 57	6		17		31		3		35	
	%		10.5	29.8		54.4		5.3		61.4	
373605 WEBSTER HS	N 22	2		4		8				10	
	%		9.1	18.2		36.4				45.5	
373610 EAST CENTRAL HS	N 61	2		17		29		2		34	
	%		3.3	27.9		47.5		3.3		55.7	
373627 MC LAIN HS	N 19	2		11		15				17	
	%		10.5	57.9		78.9				89.5	
373628 MEMORIAL HS	N 130	4		23		48		2		52	
	%		3.1	17.7		36.9		1.5		40.0	
373632 NATHAN HALE HS	N 79	11		24		47		6		54	
	%		13.9	30.4		59.5		7.6		68.4	
373638 EDISON HS	N 92	2		20		40		4		43	
	%		2.2	21.7		43.5		4.3		46.7	
373640 WILL ROGERS HS	N 52	5		13		27		1		31	
	%		9.6	25.0		51.9		1.9		59.6	
373160 CHARLES PAGE/L.E. RADER CENTER	N 156	3		18		43		4		50	
	%		1.9	11.5		27.6		2.6		32.1	
370470 BROKEN ARROW HS	N 401	6		38		122		4		132	
	%		1.5	9.5		30.4		1.0		32.9	
370330 BIXBY HS	N 105	1		9		39				41	
	%		1.0	8.6		37.1				39.0	
371905 JENKS HS	N 274			20		70		2		74	
	%			7.3		25.5		0.7		27.0	
370865 COLLINSVILLE HS	N 42	3		7		10		8		17	
	%		7.1	16.7		23.8		19.0		40.5	
373285 SKIATOOK HS	N 56	4		8		20		6		26	
	%		7.1	14.3		35.7		10.7		46.4	
373330 SPERRY HS	N 14			3		6				6	
	%			21.4		42.9				42.9	
370475 UNION HS	N 378	4		50		122		3		137	
	%		1.1	13.2		32.3		0.8		36.2	
373585 BERRYHILL HS	N 34	4		6		13		2		14	
	%		11.8	17.6		38.2		5.9		41.2	
372785 OWASSO HS	N 171	2		14		25		5		33	
	%		1.2	8.2		14.6		2.9		19.3	
371470 GLENPOOL HS	N 61	1		7		17				22	
	%		1.6	11.5		27.9				36.1	
372438 LIBERTY HS	N 11			2		2				3	
	%			18.2		18.2				27.3	
370482 TRINITY CHRISTIAN SCHOOL	N 2*										
	%										
373613 GRACE FELLOWSHIP CHRISTIAN	N 5*										
	%										
373620 BISHOP KELLEY	N 88	1		3		27		2		27	
	%		1.1	3.4		30.7		2.3		30.7	
373595 CASCIA HALL HS	N 45			1		8		1		8	
	%			2.2		17.8		2.2		17.8	
373626 METRO CHRISTIAN ACADEMY	N 34	1		2		5				6	
	%		2.9	5.9		14.7				17.6	
373615 HOLLAND HALL SCHOOL	N 14					1				1	
	%					7.1				7.1	
373520 VICTORY CHRISTIAN SCHOOL	N 25			3		5				7	
	%			12.0		20.0				28.0	

*For freshman headcount cells of 5 or fewer, data will not be displayed to protect the privacy of individuals.

ACT H.S. CODE / SITE	OKLA. H.S. GRADUATES AS FRESHMAN HEADCOUNT	SCIENCE		ENGLISH		MATH.		READING		UNDUPLICATED REMEDIATION TOTAL	
		N	%	N	%	N	%	N	%	N	%
TULSA COUNTY TOTAL	2,585	76		338		854		65		956	
			2.9		13.1		33.0		2.5		37.0
COUNTY: WAGONER											
372610 OKAY HS	N 6	1		3		3		1		4	
			16.7		50.0		50.0		16.7		66.7
370920 COWETA HS	N 49	1		6		18		1		19	
			2.0		12.2		36.7		2.0		38.8
373755 WAGONER HS	N 51	7		9		21				21	
			13.7		17.6		41.2				41.2
372920 PORTER CONSOLIDATED HS	N 7	2		2		3				5	
			28.6		28.6		42.9				71.4
WAGONER COUNTY TOTAL	113	11		20		45		2		49	
			9.7		17.7		39.8		1.8		43.4
COUNTY: WASHINGTON											
370268 SOONER HS	N 3*										
370895 COPAN HS	N 9	1		3		2		1		3	
			11.1		33.3		22.2		11.1		33.3
371055 DEWEY HS	N 24	1		6		9		7		14	
			4.2		25.0		37.5		29.2		58.3
373000 CANEY VALLEY HS	N 17			1		3				4	
					5.9		17.6				23.5
370265 BARTLESVILLE HS	N 148	6		11		29		11		36	
			4.1		7.4		19.6		7.4		24.3
WASHINGTON COUNTY TOTAL	201	8		21		43		19		57	
			4.0		10.4		21.4		9.5		28.4
COUNTY: WASHITA											
373230 BLANCHE THOMAS HS	N 18			1						1	
					5.6						5.6
370905 WASHITA HEIGHTS HS	N 8					3				3	
							37.5				37.5
370515 BURNS FLAT-DILL CITY HS	N 13										
370585 CANUTE HS	N 9			1		1				1	
					11.1		11.1				11.1
370900 CORDELL HS	N 24					3				3	
							12.5				12.5
370903 CORN BIBLE ACADEMY HS	N 2*										
WASHITA COUNTY TOTAL	75			2		8		1		9	
					2.7		10.7		1.3		12.0
COUNTY: WOODS											
370115 ALVA HS	N 25			1		4		3		5	
					4.0		16.0		12.0		20.0
373845 WAYNOKA HS	N 12	1		2						2	
			8.3		16.7						16.7

*For freshman headcount cells of 5 or fewer, data will not be displayed to protect the privacy of individuals.

ACT H.S. CODE / SITE	OKLA. H.S. GRADUATES AS FRESHMAN HEADCOUNT	SCIENCE		ENGLISH		MATH.		READING		UNDUPLICATED REMEDIATION TOTAL	
		N	%	N	%	N	%	N	%	N	%
371405 FREEDOM HS	5*										
WOODS COUNTY TOTAL	42	1		3		5		3		8	
			2.4		7.1		11.9		7.1		19.0
COUNTY: WOODWARD											
373970 WOODWARD HS	89	2		9		17		4		22	
			2.2		10.1		19.1		4.5		24.7
372420 MOORELAND HS	15			2		2		1		4	
					13.3		13.3		6.7		26.7
372505 SHARON-MUTUAL HS	9			2		2				3	
					22.2		22.2				33.3
371355 FT SUPPLY HS	4*										
WOODWARD COUNTY TOTAL	117	2		13		24		6		32	
			1.7		11.1		20.5		5.1		27.4
COUNTY: UNKNOWN											
379999 PRIVATE/UNRESOLVED OKLA HS	1*										
999999 UNKNOWN HS	842	57		168		345		65		397	
			6.8		20		41		7.7		47.1
UNKNOWN COUNTY TOTAL	843	57		168		345		65		397	
			6.8		19.9		40.9		7.7		47.1
TOTAL ALL SITES	16,773	687		2,365		5,283		875		6,125	
			4.1		14.1		31.5		5.2		36.5

Source: Oklahoma State Regents for Higher Education - Unitized Data System.

*For freshman headcount cells of 5 or fewer, data will not be displayed to protect the privacy of individuals.